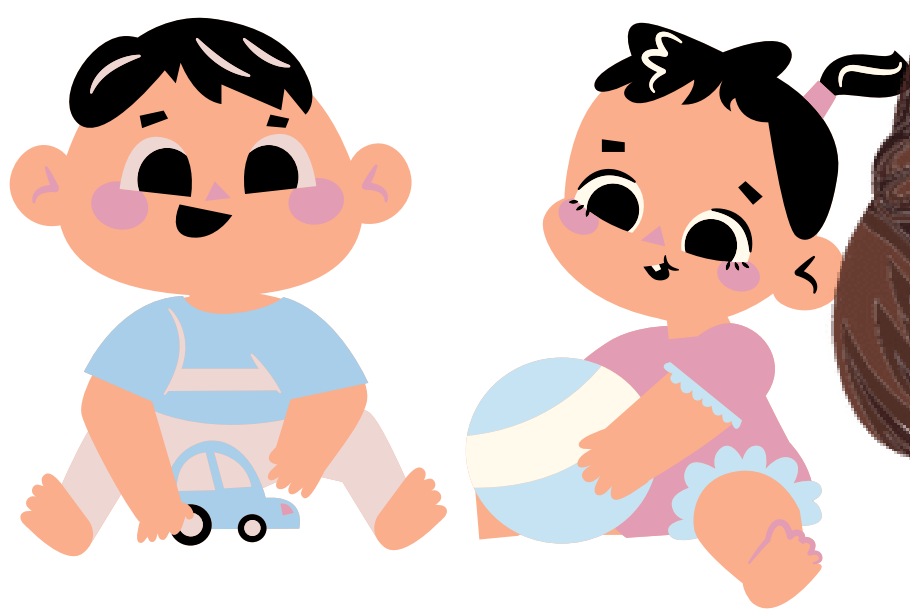


# TOTAL LIVE BIRTHS

# 939

### GENDER STATUS



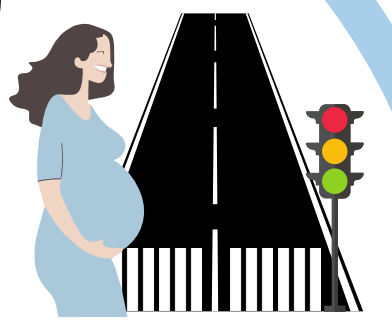
447

492

### PLACE OF BIRTH

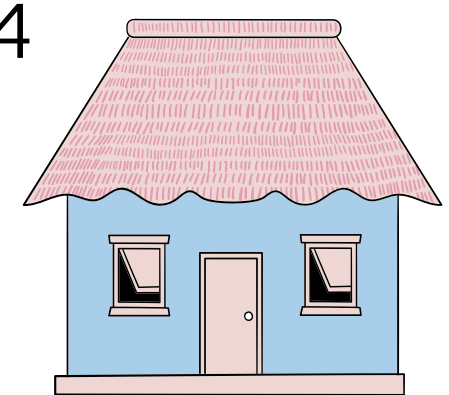


514



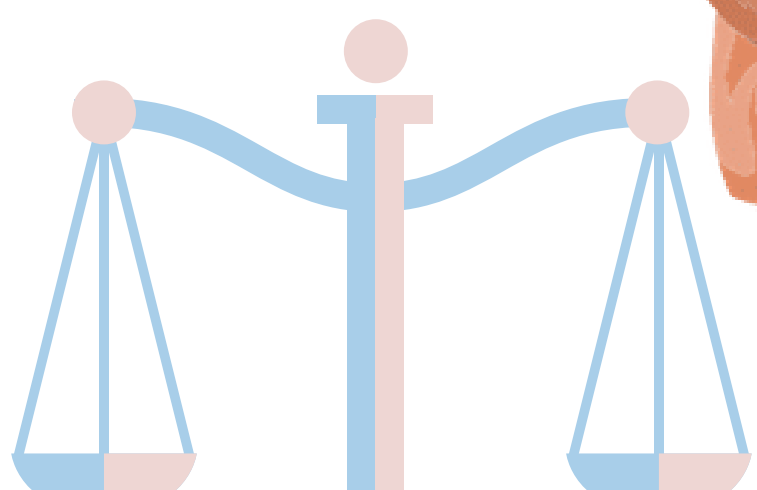
OTHER PLACES

08



417

### LEGITIMACY STATUS



LEGITIMATE

657

ILLEGITIMATE

282



TIMELY

549

LATE

390

### REGISTRATION STATUS

### TOP 5

MUNICIPALITIES WITH THE HIGHEST NUMBER OF REGISTERED BIRTHS

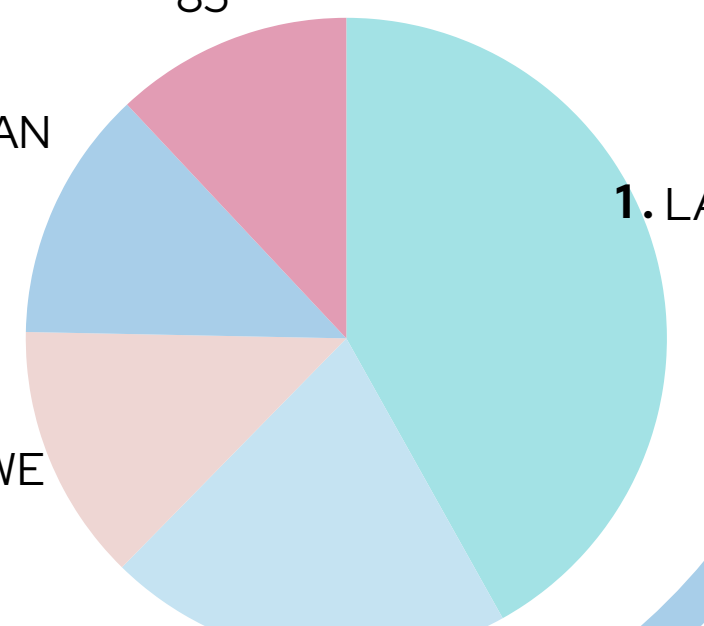
5. BANAUE  
85

4. KIANGAN  
90

3. LAGAWÉ  
92

2. ALFONSO LISTA  
145

1. LAMUT  
297



### TECHNICAL TERMS

**LIVE BIRTH** is a complete expulsion or extraction from its mother of a product of conception, irrespective of the duration of the pregnancy, which after such separation breathes or shows any other evidence of life, such as beating of the heart, pulsation of the umbilical cord, or definite movement of voluntary muscle, whether or not the umbilical cord has been cut or the placenta is attached; each product of such a birth is considered live born.

Source: Results from the Vital Events Information (VEI) and MCR's Report, Philippine Statistics Authority

