



## Economy of CAR grows by 8.7 percent in 2022

The Philippine Statistics Authority – Cordillera Administrative Region (PSA-CAR) conducted the News Conference on the 2022 Economic Performance of CAR last 27 April 2023 at the Plaza Garden Hotel and Residences.

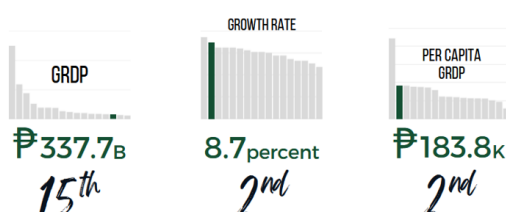
PSA-CAR Regional Director Villafe P. Alibuyog reported that the Cordillera economy, which was valued at 337.7 billion, grew by 8.7 percent in 2022. CAR recorded the second fastest growing regional economy next to Western Visayas with 9.3 percent growth rate. The regional per capita Gross Domestic Product in 2022 was estimated at 183,827 pesos. This was the second highest among the 17 regions. Wholesale and retail trade; Accommodation and food service activities; and Financial and insurance activities were the top contributors to production in the growing economy of the region with 1.9 percentage points, 1.7 percentage points, and 1.0 percentage points, respectively.

Wholesale and retail trade; Accommodation and food service activities; and Financial and insurance activities were the top contributors to

production in the growing economy of the region with 1.9 percentage points, 1.7 percentage points, and 1.0 percentage points, respectively.

During the forum, National Economic and Development Authority (NEDA) – CAR Policy Formulation and Planning Division Chief Freda M. Toyoken said *“The target actually for 2023 is at the national 6 to 7 percent Gross Domestic Product (GDP) growth, but with all the given statements that we had and all the initiatives at the regional level, very conservative na po ang aming target na 5 to 6 percent. We are confident that we will sustain this 7 to 8 percent.”*

Economic Performance of Cordillera Administrative Region in comparison to the 17 Regions in the Philippines: 2022 (At Constant 2018 Prices, in Philippine Peso)



Source: Philippine Statistics Authority (PSA)

### In this issue...

**2** PSA-CAR releases the CAR TSA Report: 2016-2021 and Compendium of Tourism Statistics

Online Dissemination of the May 2023 Inflation Rate and CPI of CAR

**3** PhilSys Services at Baguio City Kalayaan Job Fair

**4** Second Quarter IACCRVS Meeting

PSA-CAR presents Baguio City's 2021 economic performance

PSA-CAR presents the Socioeconomic Indicators for Wage Review during the RTWPB Meeting

**5** CAR provinces join in the data review and validation of SCR of the Palay Production February 2023 Round

PSA-CAR serves as resource person to SDG Forum

**6** MSAC Exploratory Meeting

First Quarter 2023 Regional Data Review for Agricultural Statistics

Second Level Training on 2023 ULE and 2022 CAF for Non-Households

**8** 2022 Fishery Production in CAR

2022 Livestock and Poultry Production

**10** Second Quarter RSC-CAR Meeting

Smart City Site Visit  
Tree Planting in Celebration of PSA's 10th Anniversary

**12** CAR QuickStat as of June 2023

CAR Statwatch

**13-14**

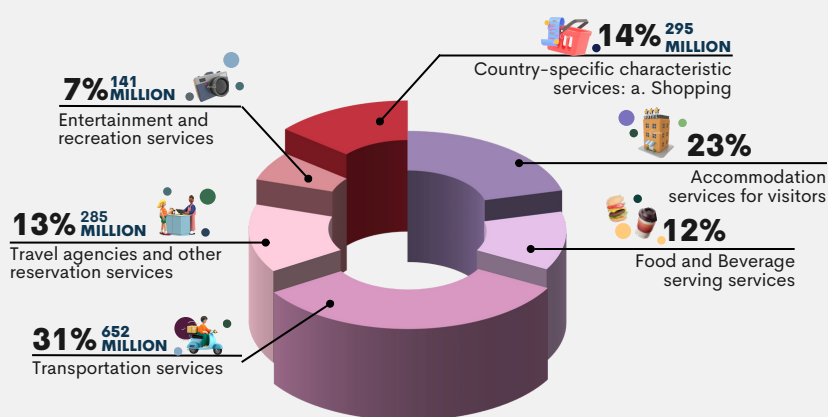
## PSA-CAR releases the CAR TSA Report: 2016-2021 and Compendium of Tourism Statistics



PSA-CAR released the CAR Tourism Satellite Accounts (TSA) Report: 2016-2021 and the Compendium of Tourism Statistics last June 5, 2023.

The TSA is an accounting framework adopted by the United Nations World Tourism Organization (UNWTO) and is designed to measure the contribution of the tourism industry to the country's economy. It provides stakeholders with indicators to guide them in crafting public policies and business strategies for tourism. The TSA harmonizes and fits tourism statistics to and from an economic standpoint.

**Percent Share of Internal Tourism Expenditure by Product item, At Current prices, CAR: 2021**



Source: Philippine Statistics Authority (PSA)

Compendium on Tourism Statistics presents time series data, including inventories of tourism spots and events. It also covers important data on tourism statistics such as tourism arrivals and expenditures, number of accommodation establishments, occupancy rate and other available tourism-related information.

The said publications can be accessed online through the following links:

CAR TSA Report: 2016-2021  
[https://rssocar.psa.gov.ph/sites/default/files/CAR-TSA-Report-2016-2021\\_0.pdf](https://rssocar.psa.gov.ph/sites/default/files/CAR-TSA-Report-2016-2021_0.pdf)

Tourism Compendium  
<https://rssocar.psa.gov.ph/sites/default/files/CAR-Tourism-Statistics-Account-Compendium.pdf>

## GANGSA



A **gangsa** (gong) is an indigenous musical instrument of the Igorots ("people of the mountain") of the Cordillera region. It is usually played during cultural celebrations, rituals and festivities. It is a cultural symbol of fellowship and unity among the Igorots.

The quarterly newsletter is prepared by the Statistical Operations and Coordination Division (SOCD) of PSA- RSSO CAR

### Editor-in-Chief

Aldrin Federico R. Bahit, Jr., CSS

### Assistant Editor-in-Chief

Rick Jason P. Aquino, IO I

### Staff/Contributors

Warren B. Mamanteo, SupSS

Ma. Gina V. De Guzman, SrSS

Betina Joy V. Bermillo, SrSS

Cherry K. Dionisio, SS II

Brozybroz Y. Mateo, SS II

Kay Angelika M. Castro, SS II

Jezi R. Boado, SS II

Osvaldo P. Cofolan, SA

Rick Jason P. Aquino, IO I

Nico L. Pagaduan, AS

Lorie Ann M. Bucagan, AS

Aeron Joe C. Bahug, COSW

Jansenn Rexus F. Banaña, COSW

Jonathan Jet G. Ruiz, COSW

Stephen Dale C. Estigoy, COSW

### Layout Artist

Reymarson P. Miclat, ISA I

Rick Jason P. Aquino, IO I

### Adviser

Villafe P. Alibuyog  
 Regional Director

3F CTLL Bldg. 141 Abanao Extension,  
 Rizal Monument, Baguio City 2600

(074) 442-7449

rssocar@psa.gov.ph  
 rssocarcrasd@psa.gov.ph  
 rssocarocd@psa.gov.ph

rssocar.psa.gov.ph  
 @psarssocar  
 @psarssocar

**DISCLAIMER:** Some photos/graphics used in this publication were downloaded from the internet. This publication does not take ownership of the said photos/graphics.







## Second Quarter IACCRVS



PSA-CAR conducted the 2nd Quarter 2023 Inter-Agency Committee on Civil Registration and Vital Statistics (IACCRVS) meeting last 10 May 2023 at Paragon Hotel, Baguio City. PSA-CAR Department of Health - Center of Health Development (DOH-CHD) - CAR Nurse II Liane Tuban presented the Regional Disease Surveillance Updates where COVID-19 cases, health indicator, deaths by province, and deaths by age and sex were reported.

PSA-CAR Chief Administrative Officer Adrian A. Cerezo presented the DOH Administrative Order 2020-0008 Rules on Medical Certification of Cause of Death (MCCOD) where points for clarification were raised and discussed. A resolution for a counterpart Memorandum Circular from the National Statistician and Civil Registrar General (NSCRG) regarding the DOH AO 2020-0008, particularly in implementing the previously stated points for clarification.



Regional Registration Center Supervisor Angel F. Marquez discussed the Philippine Identification System (PhilSys) updates as of May 2023. She reported that of the 42,840 target registrants in April 2023, only 12,478 were registered. She added that a total of 423,322 national IDs were delivered by post offices from 10 May 2021 to 30 April 2023 and 863,382 printed ePhilIDs were issued in CAR from October 2022 to 07 May 2023.

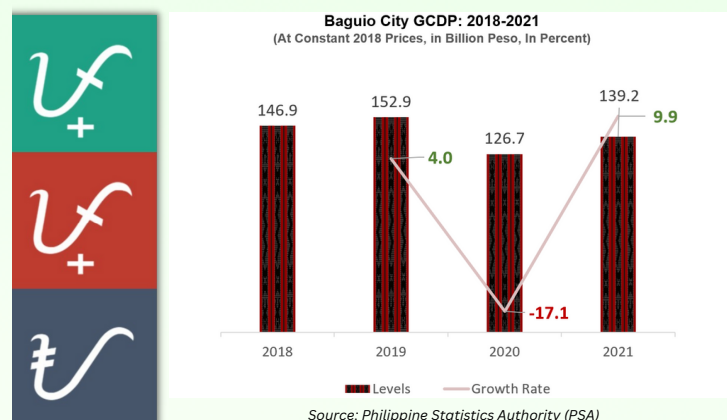
Birth Registration Agent Ritchie Mae C. Chupisna provided updates on the PhilSys Birth Registration Assistance Project. She reported that the Cordillera region has a target of 39,461 registrants where only 21,431 submitted names for verification and 14,360 of which had negative verification.

## PSA-CAR presents Baguio City's 2021 economic performance



PSA-CAR Chief Statistical Specialist Aldrin Federico R. Bahit, Jr. presented the City Gross Domestic Product (CGDP) of the City of Baguio during the flag raising ceremony of the City Government of Baguio last 03 April 2023 at Baguio City Hall. CGDP is the measure of the economic well-being of the locality by compiling all the economic outputs of all industries using the production approach.

CSS Bahit reported that the city's economy grew by 9.9 percent in 2021. The total Gross Value Added (GVA) (economic output) of the city was estimated at Php139 billion at constant 2018 prices. The city had the largest share to the economy of Cordillera with 44.8 percent share. However, the city's GVA is yet to reach the pre-pandemic levels and the city's total economic output needs to grow by 9.8 percent in 2022 to break even with 2019 levels.



The per capita Gross Domestic Product (GDP) of the city in 2021 was estimated at Php379,712. Only the City of Baguio had a per capita GDP higher than the regional level and higher as well than the national level.





## PSA-CAR presents the Socioeconomic Indicators for Wage Review during the RTWPB Meeting



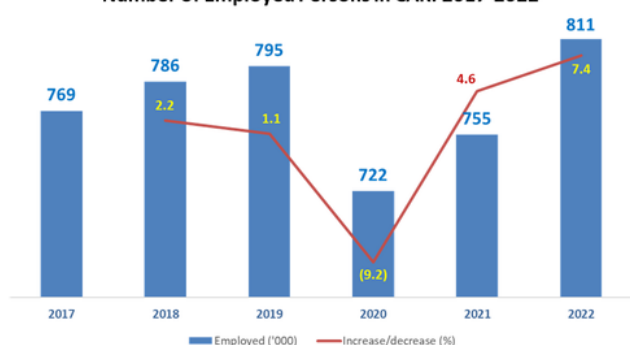
PSA-CAR Chief Statistical Specialist Aldrin Federico R. Bahit, Jr. presented the Socioeconomic Indicators for Wage Review during the Regional Tripartite Wages and Productivity Board (RTWPB) - CAR board meeting last 14 June 2023 at H100 Ecolodge, Magsaysay Avenue, Baguio City.

The said presentation included the following:

1. Labor Productivity in CAR: 2017-2022
2. Gross Regional Domestic Product (GRDP)
3. Labor and Employment
4. Labor Productivity
5. Poverty Statistics
6. Daily Minimum Wage Rates and Average Monthly Family Income



Number of Employed Persons in CAR: 2017-2022



## CAR provinces join the data review and validation of SCR of Palay Production February 2023 Round



Provincial focal persons for the Survey on Costs and Returns (SCR) from the six Provincial Statistics Offices of the PSA - CAR joined the Data Review and Validation Workshop on the Results of SCR of Palay Production February 2023 Round last 02 to 05 May 2023 at the Ritz Hotel, Legarda Road, Baguio City.

The workshop aims to ensure the quality of statistics gathered from agricultural statistics surveys, specifically on the Survey on Costs and Returns (SCR) of Palay Production gathered for the reference period July to December 2022. The review was led by Senior Statistical Specialist Ma. Gina V. De Guzman and Statistical Analyst Osvaldo P. Cofolan of PSA-CAR.

The SCR is one of the agricultural surveys conducted by the Philippine Statistics Authority (PSA) in collaboration with the Department of Agriculture (DA) and the Bureau of Agricultural Research (BAR) to generate data on the cost structure of palay production, and average use of materials and labor inputs, measures of profitability, and other socio-economic characteristics of palay farming in the country. The estimates generated from the survey serves as benchmark data for the annual updating of the database on costs and returns of palay production.

### 2022 Palay Production in CAR



Source: Philippine Statistics Authority (PSA)



## PSA-CAR serves as resource person to SDG Forum



PSA-CAR acted as resource speakers on the Monitoring and Tracking of the Sustainable Development Goals (SDG) Pace of Progress Forum conducted by the PSA RSSO-IV-A and presented the SDG Experience and SDG Tracker of CAR last 23-24 May 2023 at JET Hotel, Lipa City, Batangas

Chief Statistical Specialist Aldrin Federico R. Bahit, Jr. presented the monitoring of Cordillera's SDG which included the following:

1. Background of SDG
2. Global SDG
3. Philippine SDG and Core Sustainable Development Goal Indicators (SDGIs)
4. CAR SDG and Core SDGIs
5. CAR SDG Monitoring Efforts

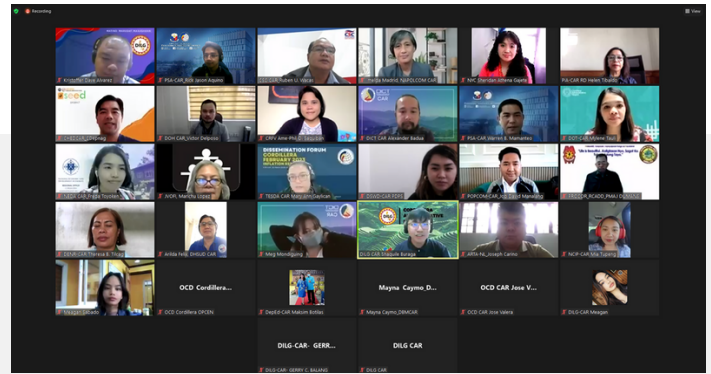
Provincial Product Accounts (PPA) Project Staff Jansenn Rexus F. Banaña presented Cordillera's experience in reporting regional SDG performance using United Nations Economic and Social Commission for Asia and the Pacific (UN ESCAP) National SDG Tracker. Mr. Banaña presented the following topics:

1. SDG
2. SDG Indicators
3. UN ESCAP
4. SDG Tracker Methodology
5. SDG Tracker Challenges
6. SDG Tracker Improvements
7. Value of the SDG Tracker
8. Cordillera SDG Tracker

The activity was attended by more than 30 participants composed of regional line agencies SDG focal persons and PSA staff from the central office, CAR regional office, and IV-A regional office and its provincial offices.



## Multi-Stakeholder Advisory Council (MSAC) Exploratory Meeting

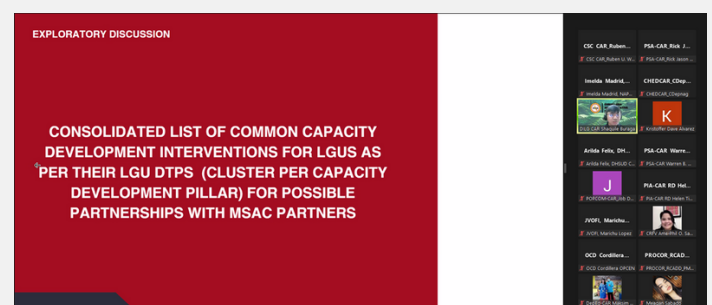
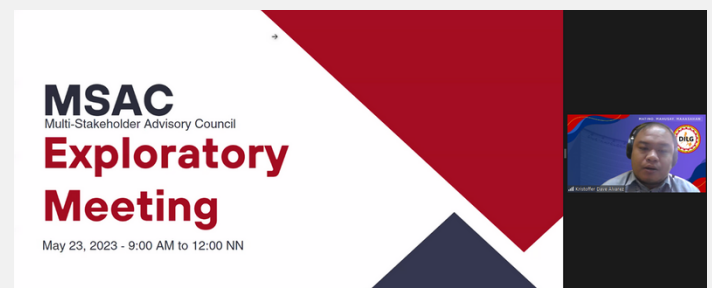


The Department of the Interior and Local Government conducted the Multi-Stakeholder Advisory Council (MSAC) explanatory meeting last 23 May 2023 via Zoom. The meeting was facilitated by DILG-CAR Shaquile Buraga. The main objectives of the meeting were to clarify the functions and organization of MSAC and discuss the MOA that is to be signed on 22 June 2023.

PSA-CAR representatives Supervising Statistical Specialist Warren B. Mamanteo, and Information Officer I Rick Jason P. Aquino attended the said meeting.

The agenda of the said meeting were as follows:

1. Cordillera Local Governance Regional Resource Center (CLGRRC) MSAV Overview
2. Agreements on the 1st Quarter MSAC Meeting
3. Partnership Focus
4. Presentation of the Draft-MOA
5. Other Possible Exploratory Undertakings
6. Other Matters
7. Summary of Agreements





## First Quarter 2023 Regional Data Review for Agricultural Statistics



PSA-CAR conducted its 1st Quarter 2023 Regional Data Review for Agricultural Statistics at PSA-CAR Conference Room, Baguio City from 17-21 April 2023. This was participated by two representatives from each of the six provincial operation centers of the region, specifically the focal persons for agricultural surveys.

PSA-CAR Regional Director Villafe P. Alibuyog gave the opening remarks where she emphasized the importance of holding the activity as a means of delivering quality statistics. The conduct of Regional Data Review is a system of quality control that has been institutionalized to ensure highest quality of the generated survey estimates, specifically in agricultural surveys.

The output of the Regional Data Review will then be presented during the National Data Review and will further undergo validation by the commodity specialists from the Crops Statistics Division (CSD), Livestock and Poultry Statistics Division (LPSD), Fisheries Statistics Division (FSD) and Price Statistics Division (PSD) of the Economic Sector Statistics Service (ESSS).

The final validated estimates serve as inputs to Value of Production in Philippine Agriculture and Fisheries, preparation of Gross Regional Domestic Product and Provincial Product Accounts, accordingly. Moreover, the survey supports the data needs of planners, policy and decision makers, and other stakeholders in the agriculture sector, particularly the National Economic and Development Authority (NEDA), Department of Agriculture (DA) and its attached agencies such as Philippine Rice Research Institute (PhilRice), Philippine Council for Agriculture and Fisheries (PCAF), and the general public.

## Second Level Training on 2023 ULE and 2022 CAF for Non-Households



PSA-CAR conducted the Second Level Training on 2023 Updating of the List of Establishments (ULE) and 2022 Census of Agriculture and Fisheries (CAF) for Non-Households at Ritz Hotel, Legarda Road, Baguio City last 27 March to 01 April 2023.

The 2023 ULE will involve door-to-door canvassing of establishments covering all barangays nationwide to update the status of operation and characteristics of those establishments in the List of Establishments (LE) as of 31 March 2023 and capture "new" establishments or those not yet in the LE for inclusion in the register. Additionally, as a rider in the operation, the 2022 CAF questionnaires will be distributed to the non-household units.

The 2023 ULE aims to provide an updated Statistical Business Register containing information on basic characteristics of establishments needed for the conduct of economic censuses and surveys and formulation of policies and implementation of programs in the country. On the other hand, CAF is a large-scale government undertaking that is geared towards the collection and compilation of basic information on the agricultural and fishery sectors in the country.

In a video message, National Statistician and Civil Registrar General Claire Dennis S. Mapa welcomed the 19 participants, composed of establishment-based and agricultural surveys focal persons and technical staff from the central office, regional office, and provincial offices. He highlighted the importance of intensive supervision in order to adhere to the PSA's Quality Policy of delivering relevant and reliable statistics. He said "To generate quality data, we need to put highlight, high value, and higher weight on proper supervision."

CAR has a total of 34,030 target establishments (excluding new establishments) for this year's enumeration. The enumeration period of the survey will start from May to July 2023.



# 2022 Fishery Production in CAR



The total fish production of the Cordillera Administrative Region (CAR) registered a decrease of (4.3) percent from 4,096.3 metric tons (MT) in 2021 to 3,920.5 MT in 2022, contributed by both Inland and Aquaculture production. The provinces of Ifugao and Kalinga recorded negative trends. However, fish production in the provinces of Abra, Apayao, Benguet, and Mountain Province registered production growth.

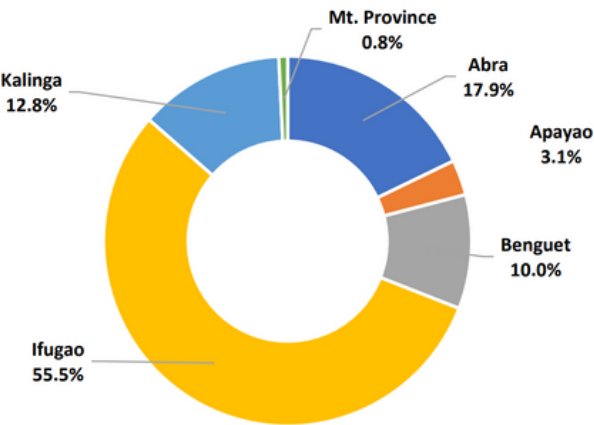
Table 1. Fishery Production by Aquafarm Type, by Province, CAR: 2022

REGION/PROVINCE	Production (MT)		% Change
	2021	2022	
<b>CAR</b>	<b>4,096.3</b>	<b>3,920.5</b>	<b>(4.3)</b>
INLAND	657.7	539.3	(18.0)
AQUACULTURE	3,438.5	3,381.2	(1.7)
<b>ABRA</b>	<b>667.7</b>	<b>700.3</b>	<b>4.9</b>
INLAND	245.3	321.8	31.2
AQUACULTURE	422.4	378.5	(10.4)
<b>APAYAO</b>	<b>109.8</b>	<b>121.1</b>	<b>10.3</b>
INLAND	44.5	9.1	(79.6)
AQUACULTURE	65.2	112.0	71.6
<b>BENGUET</b>	<b>141.8</b>	<b>391.1</b>	<b>175.8</b>
INLAND	25.3	11.6	(54.0)
AQUACULTURE	116.5	379.4	225.7
<b>IFUGAO</b>	<b>2,627.0</b>	<b>2,175.5</b>	<b>(17.2)</b>
INLAND	68.2	74.5	9.3
AQUACULTURE	2,558.8	2,100.9	(17.9)
<b>KALINGA</b>	<b>524.4</b>	<b>502.5</b>	<b>(4.2)</b>
INLAND	268.1	112.5	(58.0)
AQUACULTURE	256.3	389.9	52.1
<b>MT. PROVINCE</b>	<b>25.3</b>	<b>30.1</b>	<b>18.9</b>
INLAND	6.0	9.7	61.4
AQUACULTURE	19.3	20.5	5.8

Source: Philippine Statistics Authority (PSA)

Out of the 3,920.5 MT total regional fishery production 3,381.2 MT (86.2 percent) came from aquaculture and 539.3 MT (13.8 percent) came from inland fishery production.

Figure 1. Percentage Distribution of Total Fisheries Production by Province, CAR:2022



Source: Philippine Statistics Authority (PSA)

Ifugao was consistently the top producer in 2022 with 2,175.5 MT, accounting for 55.5 percent of the total regional fishery production. Abra province came second with 17.9 percent share, followed by Kalinga with 12.8 percent, Benguet with 10.0 percent, and Apayao with 3.1 percent.

## MUNICIPAL INLAND FISHERIES

Inland municipal fishing refers to fishing in inland waters like lakes, rivers, and dams. Using simple gears and fishing boats some of which are non-motorized with a capacity of less than three (3) gross tons or fishing not requiring the use of fishing boats.

Cordillera municipal inland fishing output in 2022 was 539.3 MT, comprising 13.8 percent of the total fishery production in the region.

Table 2. Municipal Inland Production by Province, CAR: 2022

Region/Province	Production (MT)	% to Total
<b>CAR</b>	<b>539.3</b>	<b>100.0</b>
Abra	321.8	59.7
Apayao	9.1	1.7
Benguet	11.6	2.2
Ifugao	74.5	13.8
Kalinga	112.5	20.9
Mt. Province	9.7	1.8

Source: Philippine Statistics Authority (PSA)

## AQUACULTURE PRODUCTION

Aquaculture is a fishery operation involving all forms of raising and culturing of fish and other fishery species in fresh, brackish, and marine water areas.

In 2022, CAR registered an aquaculture production of 3,381.2 MT with an estimated area harvested of 674.6 hectares. Aquaculture dominated the region’s fisheries accounting for 86.2 percent of the total fish production.

Table 3. Aquaculture Production and Area Harvested by Province, CAR:2022

Region/Province	Production (MT)	Area Harvested (HA)
<b>CAR</b>	<b>3,381.2</b>	<b>674.6</b>
Abra	378.5	298.8
Apayao	112.0	55.8
Benguet	379.4	24.4
Ifugao	2,100.9	157.6
Kalinga	389.9	130.4
Mt. Province	20.5	7.7

Source: Philippine Statistics Authority (PSA)

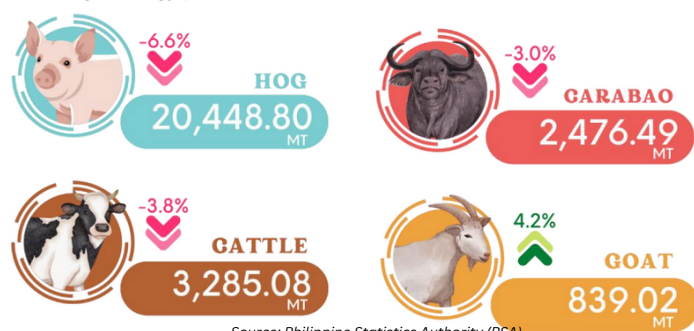
Ifugao province was the aquaculture fishery carrier of the region which posted the highest production with 2,100.9 MT from an area harvested of 157.6 hectares. Abra was second with 378.5 MT with an area harvested of 298.8 hectares while Mountain Province had the least aquaculture production in the region with only 20.5 MT and an area harvested of 7.7 hectares.



## 2022 Livestock and Poultry Production in CAR

The total volume of livestock production in the Cordillera Administrative Region (CAR) in 2022 was estimated at 27,049 metric tons. This was composed of 20,449 metric tons of hog, 3,285 metric tons of cattle, 2,476 metric tons of carabao, and 839 metric tons of goat.

**Figure 1. Livestock Production and Growth Rates by Animal Type, CAR:2022**



The 2022 total volume of livestock production in CAR was 5.6 percent lower than the 28,664 metric ton production of the sector in the region in 2021.

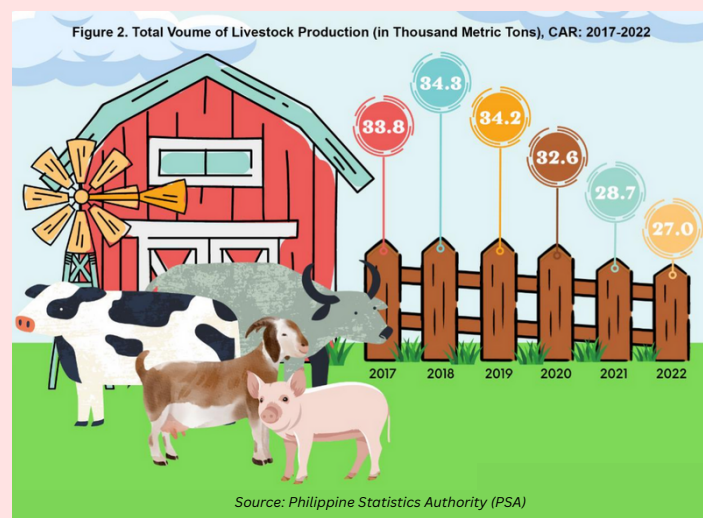
Of the 5.6 percent contraction in the total volume of livestock production in the region, hog production contributed most with 5.0 percentage points. This was followed by cattle and carabao production with a combined contribution of 0.8 percentage points to the decline.

The hog sub-sector recorded a 6.6 percent decline in production in 2022. This was the fastest contracting sector in the livestock industry of the region. Cattle production also declined by 3.8 percent and carabao by 3.0 percent. Conversely, goat production grew by 4.2 percent.

In terms of share to the total volume of livestock production of CAR, hog production comprised three-fourths of the region's total livestock output in 2022. Meanwhile, the production of cattle had 12.1 percent share while carabao and goat accounted for 9.2 and 3.1 percent of the total CAR livestock production, respectively.

In 2022, the Philippines produced 2,147,422 metric tons of livestock commodities. Compared to other regions, CAR remained to be one of the smallest contributors to the country's total livestock production with 1.2 percent share.

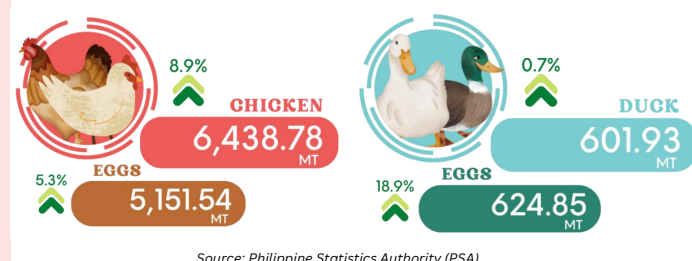
Figure 2 shows the total volume of livestock production of CAR from 2017 to 2022. The region continuously experienced a decline in total livestock production from 2018 with 34,334 metric tons to 27,049 metric tons in 2022.



### Production of poultry commodities improves in 2022

Cordillera's poultry sector, in terms of total volume of production, grew by 7.4 percent from the 11,930 metric ton production in 2021 to 12,817 metric tons poultry products produced in 2022.

**Figure 3. Volume of Production and Growth Rates by Poultry Product, CAR: 2022**



All poultry commodities posted growths in 2022 with duck egg production growing the fastest with 18.9 percent. This was followed by the production of chicken with 8.9 percent growth, chicken egg with 5.3 percent, and duck with 0.7 percent.

Ninety percent of the total CAR poultry production in 2022 was from chicken and chicken egg production while duck and duck egg accounted for the remaining 10 percent.

The total volume of poultry production of the region contributed less than 0.5 percent to the 2,657,038 metric ton output of the poultry sector of the country in 2022.



Republic of the Philippines  
REGIONAL STATISTICS COMMITTEE  
Cordillera Administrative Region.

## Second Quarter RSC-CAR Meeting



The Second Quarter 2023 Regional Statistics Committee - Cordillera Administrative Region (RSC-CAR) meeting was conducted last 01 June 2023 at NEDA RDC Hall, Baguio City.

The said meeting had two resolutions for approval and 12 matters for information. The following resolutions were discussed and approved:

### RSC-CAR Resolution No. 8 Series of 2023

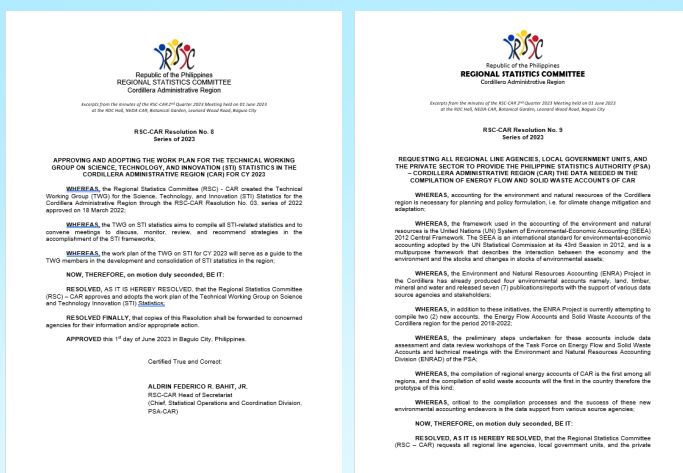
Approving and Adopting the Work Plan for the Technical Working Group on Science, Technology, and Innovation (STI) Statistics in the Cordillera Administrative Region

### RSC-CAR Resolution No. 9 Series of 2023

Requesting All Regional Line Agencies, Local Government Units, and the Private Sector to Provide the Philippine Statistics Authority (PSA) - Cordillera Administrative Region (CAR) the Data Needed in the Compilation of Energy Flow and Solid Waste Accounts of CAR

The Committee discussed the following matters for information:

1. Report on the 2022 Gross Regional Domestic Product (GRDP) Gross Regional Domestic Expenditure (GRDE) of CAR
2. 2023 CAR 1st Quarter Regional Economic Situationer (QRES)
3. CAR Regional Statistical Development Program (RSDP) 2023-2029
4. 2022 Health Situation of CAR
5. Community-Based Monitoring System (CBMS) Updates
6. Updates on the 2022 Census of Agriculture and Fisheries (CAF)
7. Report of the ENRA Project and the TWG on Environment Statistics
8. Report on the TWG on Tourism Statistics
9. Report on the implementation of PPA in the 6 provinces and 1 HUC of CAR
10. Report on the implementation of PPA in the 6 provinces and 1 HUC of CAR
11. PhilSys Updates



Copies of RSC-CAR Resolutions can be accessed at <https://rssocar.psa.gov.ph/rsc-resolutions>.

The Third Quarter 2023 RSC-CAR meeting is scheduled on 31 August 2023 at the Paragon Hotel, Baguio City.



## Smart City Site Visit



PSA-CAR visited the City of Baguio's Smart City Command and Control Center at the Baguio Convention Center last 28 April 2023 as part of the site visits in relation to the Regional Accounts of the Philippines.

Information System Analyst II Adam Bert A. Lacay facilitated the orientation on the Smart City Command Center. The command center uses state-of-the-art Cisco technology that will revolutionize how the city manages its critical assets, increase capacity to prevent and respond to emergencies and disasters, preserve the environment, speed up government services, improve social and health systems and protect lives and properties.



Mr. Lacay discussed the 911 feature of the Smart City Command Center where it is currently active in responding to emergencies and that they are very serious in dealing with those making prank calls. High-definition cameras were installed in many parts of the city where they are manned by artificial intelligence for detecting traffic violations. He promoted the mobile application "Baguio In My Pocket" that aims to provide an all-in-one digital platform to provide key services to the people of the city.

He also introduced Project Lightning of the National Transmission Corporation (NTC), a project in partnership with Benguet Electric Cooperative (BENECO), which aims to provide gigabit-speed broadband service over the power lines. This was offered to the city to provide internet connectivity especially in the remote areas of the city.

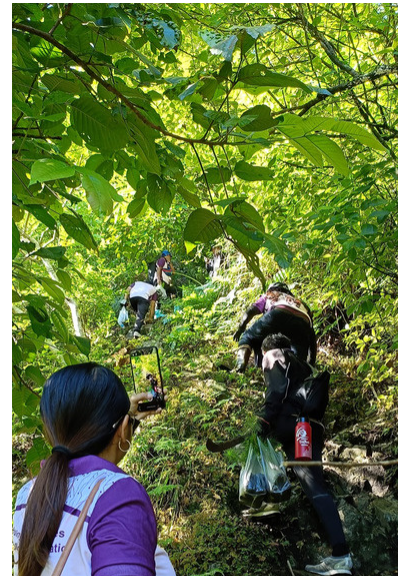
## Tree Planting Activity in Celebration of PSA's 10th Anniversary



PSA RSSO-CAR conducted a tree planting activity last 23 June 2023 at Camp 6, Tuba in support to Arbor Day and National Greening Program of DENR and in celebration of PSA's upcoming 10th Anniversary on 12 September 2023.

The said activity was participated by staff from PSA RSSO-CAR, PSA-Benguet, and DENR-CAR.

Over 200 seedlings of pine trees were planted during the tree planting activity.





# CORDILLERA QUICKSTAT

INDICATOR	REFERENCE PERIOD and DATA		
TOTAL POPULATION ('000) <sup>1/</sup>	2010	2015	2020
Philippines	92,338	100,981	109,035
Cordillera Administrative Region	1,617	1,722	1,798
Abra	235	241	251
Apayao	113	119	124
Baguio City	319	345	366
Benguet**	404	446	461
Ifugao	191	203	207
Kalinga	202	213	230
MT Province	154	155	158
ANNUAL GROWTH RATE (%) <sup>2/</sup>	2010-2015	2015-2020	2010-2020
Philippines	1.72	1.43	1.47
Cordillera Administrative Region	1.21	0.91	1.06
Abra	0.52	0.84	0.67
Apayao	1.08	0.90	0.99
Baguio City	1.54	1.25	1.40
Benguet**	1.91	0.67	1.32
Ifugao	1.14	0.48	0.83
Kalinga	1.02	1.62	1.31
MT Province	0.05	0.49	0.26
PROJECTED MID-YEAR POPULATION ('000) <sup>3/</sup>	2023	2024	2025
Philippines	112,892	114,143	115,377
Cordillera Administrative Region	1,850	1,842	1,874
Abra	250	251	252
Apayao	126	126	127
Benguet**	876	884	892
Ifugao	214	215	216
Kalinga	224	225	226
MT Province	158	158	158
MAGNITUDE OF POOR FAMILIES	2015	2018	2021
Cordillera Administrative Region	67,640	36,350	30,740
Abra	12,210	8,190	9,190
Apayao	8,430	4,270	1,300
Benguet**	4,710	7,650	7,930
Baguio City	-	1,440	1,080
Ifugao	14,660	4,460	2,830
Kalinga	14,590	4,030	2,560
MT Province	12,830	6,310	5,850

INDICATOR	REFERENCE PERIOD and DATA		
MAGNITUDE OF POOR INDIVIDUALS	2015	2018	2021
Cordillera Administrative Region	390,230	213,830	180,710
Abra	74,200	45,650	53,520
Apayao	43,100	24,040	8,470
Benguet**	28,500	41,090	41,990
Baguio City	-	8,240	6,220
Ifugao	85,920	30,130	17,110
Kalinga	88,440	26,310	18,450
MT Province	70,080	38,370	34,960
VITAL STATISTICS <sup>4/</sup>	DEC 2021	NOV 2022	DEC 2022 <sup>5/</sup>
REGISTERED BIRTH			
Cordillera Administrative Region	2,143	1,287	849
Abra	183	206	107
Apayao	182	164	78
Baguio City	437	4	-
Benguet**	560	87	56
Ifugao	279	285	180
Kalinga	318	329	260
MT Province	184	212	188
REGISTERED MARRIAGE			
Cordillera Administrative Region	1,328	167	489
Abra	147	40	100
Apayao	117	8	73
Baguio City	240	-	-
Benguet**	404	-	-
Ifugao	138	48	83
Kalinga	171	38	151
MT Province	111	33	82
REGISTERED DEATHS			
Cordillera Administrative Region	864	664	253
Abra	137	127	90
Apayao	58	61	35
Baguio City	187	136	2
Benguet**	200	108	4
Ifugao	85	76	42
Kalinga	106	81	43
MT Province	91	75	37

INDICATOR	REFERENCE PERIOD and DATA		
CONSUMER PRICE INDEX ALL ITEMS, (2018=100) <sup>6/</sup>	MAY 2022	APR 2023	MAY 2023
Philippines	113.9	120.9	120.9
Cordillera Administrative Region	114.1	118.5	118.5
Abra	112.3	118.0	117.5
Apayao	113.9	120.7	120.8
Benguet**	114.7	119.0	119.1
Baguio City	112.4	115.6	115.8
Ifugao	115.2	119.1	120.3
Kalinga	116.3	121.5	121.1
MT Province	118.8	125.5	124.1
INFLATION RATE (%), ALL ITEMS <sup>6/</sup>	MAY 2022	APR 2023	MAY 2023
Philippines	5.4	6.6	6.1
Cordillera Administrative Region	4.9	4.3	3.9
Abra	4.5	5.9	4.6
Apayao	6.9	7.5	6.1
Benguet**	9.6	3.6	3.8
Baguio City	5.9	3.4	3.0
Ifugao	5.6	3.7	4.4
Kalinga	6.7	5.2	4.1
MT Province	7.0	6.4	4.5
PURCHASING POWER of the PESO <sup>7/</sup>	MAY 2022	APR 2023	MAY 2023
Philippines	0.88	0.83	0.83
Cordillera Administrative Region	0.88	0.84	0.84
Abra	0.89	0.85	0.85
Apayao	0.88	0.83	0.83
Benguet**	0.87	0.84	0.84
Baguio City	0.89	0.87	0.86
Ifugao	0.87	0.84	0.83
Kalinga	0.86	0.82	0.83
MT Province	0.84	0.80	0.81
LITERACY <sup>8/</sup>	2008	2013	2019
Philippines			
Basic Literacy Rate	95.6	96.5	93.8
Functional Literacy Rate	86.4	90.3	91.6
Cordillera Administrative Region			
Basic Literacy Rate	94.8	94.9	94.0
Functional Literacy Rate	89.2	91.2	92.0

INDICATOR	REFERENCE PERIOD and DATA		
LABOR and EMPLOYMENT <sup>9/</sup>	APR 2022	JAN 2023 <sup>10/</sup>	APR 2023 <sup>11/</sup>
Philippines			
Working Age Population ('000)	71,137	72,051	72,121
Labor Force Participation Rate (%)	65.15	65.15	65.15
Employment Rate (%)	93.6	95.2	95.5
Unemployment Rate (%)	6.4	4.8	4.5
Cordillera Administrative Region			
Working Age Population ('000)	1,270	1,275	1,275
Labor Force Participation Rate (%)	65.0	64.3	65.4
Employment Rate (%)	94.9	96.7	97.3
Unemployment Rate (%)	5.1	3.3	2.7
AGRICULTURAL STATISTICS: CROPS PRODUCTION in CAR (MT) <sup>12/</sup>	Q1 2022	Q4 2022	Q1 2023
Palay	28,860	141,829	28,684
Corn	40,497	51,862	41,890
Cabbage	19,419	46,088	20,181 <sup>13/</sup>
Pechay	12,446	29,717	11,094 <sup>13/</sup>
Broccoli	1,691	513	1,643 <sup>13/</sup>
Potato	15,697	50,983	15,059 <sup>13/</sup>
Carrots	11,442	27,837	11,206 <sup>13/</sup>
Coconut (w/husk)	273	237	267 <sup>13/</sup>
FISHERY PRODUCTION in CAR (MT) <sup>14/</sup>	Q4 2021	Q3 2022	Q4 2022
Municipal Inland	256	159	213
Aquaculture	1,059	835	813

INDICATOR	REFERENCE PERIOD and DATA		
LIVESTOCK and POULTRY PRODUCTION in CAR (MT) <sup>15/</sup>	Q1 2022	Q4 2022	Q1 2023
Carrot	857	161	8
Cattle	8	75	6
Goat	140	233	154
Hog	5,395	5,253	5,667
Chicken	1,685	1,764	1,506
Duck	155	155	173
Chicken eggs	1,316	1,293	1,306
AVERAGE FARM PRICES (PHP/Kg) <sup>16/</sup>	APR 2022	MAR 2023	APR 2023
Palay (Paddy) Other Variety, dry	17.73	18.87	18.38
Corngain (Maize) Yellow, matured	17.34	20.13	16.62
Cabbage	20.53	16.53	14.94
Chinese Cabbage	15.81	15.74	16.32
Broccoli	32.63	27.28	38.83
White Potato	26.18	48.45	36.37
Carrots	27.55	19.04	11.14
Coconut, matured	9.41	7.52	8.71
Strawberry	325.71	184.68	164.37
Carabao for Slaughter (backyard)	190.48	156.67	-
Cattle for Slaughter (backyard)	194.44	180.00	-
Goat for Slaughter (backyard)	141.68	206.88	-
Hogs for Slaughter (backyard)	215.64	198.23	-
Native Chicken (backyard)	226.60	238.71	-
Duck for meat (backyard)	200.66	190.57	-

INDICATOR	REFERENCE PERIOD and DATA		
RICE HOUSEHOLD STOCKS (MT) <sup>17/</sup>	APR 2022	MAR 2023	APR 2023
Cordillera Administrative Region	11,647.00	34,313.89	39,613.44
Abra	5,845.00	12,507.10	16,207.58
Apayao	1,522.00	2,606.67	2,579.97
Baguio City	712.00	9,755.52	8,905.44
Ifugao	1,367.00	1,890.03	3,325.59
Kalinga	3,836.00	3,812.73	5,504.34
MT Province	2,304.00	3,741.83	3,090.53
Legend:			
1/ - Source: 2000, 2010 and 2015 Census of Population and Housing			
2/ - Based on Population Growth Rate 2000-2015, 2000-2010 & 2010-2015			
3/ - Source: 2015 Census-Based National, Regional and Provincial Population Projections			
4/ - Based on PSA Poverty Official Statistics			
5/ - Based on PSA Vital Statistics Report, 2020 preliminary data			
6/ - Based on Monthly CPI Result			
7/ - Source: Functional Literacy, Education, and Mass Media Survey			
8/ - Source: Labor Force Survey			
9/ - Source: Crop Production Surveys			
10/ - Source: Fishery Surveys			
11/ - Source: Livestock and Poultry Production Survey			
12/ - Source: Farm Prices Survey			
13/ - Palay and Corn Stocks Survey			
14/ - Benguet including Baguio City			
15/ - Benguet excluding Baguio City			
16/ - Revised based on the CPI (2012) and adoption of the 2015 PopCen result			
17/ - no data available			
P - preliminary data			
For Inquiries:			
Philippine Statistics Authority Regional Statistical Services Office Cordillera Administrative Region CTI Bldg., 141 Albano Extension, Rizal Monument Area 2600 Baguio City, Philippines			
Tel. No. (074) 422-7447 Telex No. (074) 422-7448 E-mail address: rsoo@psa.gov.ph URL: www.rsoo.psa.gov.ph			



# CORDILLERA STATWATCH

INDICATORS	Reference Period	Abra	Apayao*	Benguet	Ifugao	Kalinga	MT. Province
<b>GEOGRAPHY</b>							
(Source: DENR-CAR & TWG-PGC, PSA)							
Land Area (in sq. km.)	As of 2013	4,199.7	4,502.3	2826.59 a/	2,618.0	3,282.0	2,389.4
Percentage to the Region's Land Area	As of 2013	21.2	22.7	14.3 a/	13.2	16.6	12.1
No. of Municipalities	As of 02 May 2019	27	7	13	11	7	10
No. of Barangays	As of 02 May 2019	303	133	140	176	152	144
<b>DEMOGRAPHY (Source: PSA-CAR)</b>							
Total Population	As of May 1, 2020	250,985	124,366	460,683 b/	207,498	229,570	158,200
Percentage to the Region's Population	As of May 1, 2020	14.0	6.9	25.6 b/	11.5	12.8	8.8
Population Density (persons/sq. km.)	As of May 1, 2020	60	28	163 b/	79	70	66
Ave. Annual Population Growth Rate b/	2015-2020	0.84	0.90	0.67	0.48	1.62	0.49
<b>AGRICULTURE (Source: PSA-CAR) c/</b>							
Inventory of Swine (no. of heads)	As of 01 Apr 2023	40,318	17,487	36,751	18,804	37,694	35,828
Inventory of Cattle (no. of heads)	As of 01 Apr 2023	21,406	3,480	8,793	6,490	8,043	9,370
Inventory of Carabao (no. of heads)	As of 01 Apr 2023	18,411	18,100	11,528	5,756	19,550	5,735
Inventory of Goat (no. of heads)	As of 01 Apr 2023	34,259	5,575	15,693	10,960	2,024	1,550
Inventory of Chicken (no. of heads)	As of 01 Apr 2023	309,171	355,602	255,364	765,231	225,460	713,790
Inventory of Duck (no. of heads)	As of 01 Apr 2023	35,620	58,640	6,028	142,035	99,903	17,529
Palay Production (in metric tons)	1st Quarter 2023	8,292	2,525	6,029	6,960	4,556	322
Corn Production (in metric tons)	1st Quarter 2023	3,276	1,258	232	17,946	13,476	5,703
Fish Production (in metric tons)	1st Quarter 2023	218	27	68	523	36	6
Vegetable Production (in metric tons)	1st Quarter 2023	3,872	1,217	98,736	1,343	699	2,218
Fruit Production (in metric tons)	1st Quarter 2023	1,968	366	1,959	1,192	757	138
Non-Food Industrial and Commercial	1st Quarter 2023	1,147	115	3,521	175	13,951	777
<b>LABOR AND EMPLOYMENT (Source: PSA-CAR)**</b>							
Employment Rate	July 2013	93.5	93.6	97.1	96.6	99.2	92.7
Unemployment Rate	July 2013	6.5	6.4	2.9	3.4	0.8	7.3
<b>INCOME AND PRICES (Source: PSA-CAR)</b>							
Average Annual Family Income	2009	P133,688	P158,732	P303,525 d/	P149,062	P170,385	P122,076
Average Annual Family Expenditure	2009	P111,176	P114,332	P235,220 d/	P123,221	P150,620	P109,649
Annual Per Capita Poverty Threshold	2021P	P29321	P25694	P27519	P28734	P25447	P31063
Incidence of Poor Families	2021P	15.8	4.7	3.9	6.0	5.6	15.3
(proportion of poor families to the total no. of families)							
Consumer Price Index (2012=100)	March 2023	118.0	120.9	119.2	119.6	122.5	125.8
	February 2023	119.1	102.7	120.4	120.6	124.5	126.8
	March 2022	110.6	110.4	113.9	114.1	113.9	116.2
Inflation Rate (2012=100)	March 2023	7.6	9.5	4.7	4.8	7.6	8.3
	February 2023	7.7	9.9	6.4	6.4	10.1	10.1
	March 2022	3.5	3.0	8.3	3.5	3.8	4.0
<b>INTERNAL REVENUE ALLOTMENT</b>							
(Source: DBM-CAR) (in million pesos)							
Province Proper	4th Quarter 2019	258.5	236.6	265.4	210.5	227.9	188.3
Municipalities	4th Quarter 2019	494.0	284.9	403.5	280.4	203.3	234.3
City	4th Quarter 2019	-	-	208.8	-	249.8	-
Barangay	4th Quarter 2019	127.1	57.4	209.3	84.3	76.8	67.1

\* formerly a sub-province of Kalinga-Apayao (see Kalinga)

\*\*Benguet data do not include Baguio City

p/- preliminary

\*\*\* - no. of unemployed is less than 500

Notes: Details may not add up to totals due to rounding.

a/ includes Baguio City

b/ 2020 Census-Based National, Regional and Provincial Population Projections

c/ data are preliminary

d/ excludes Baguio City

## Sources of Data:

DENR-CAR - Department of Environment and Natural Resources-Cordillera Administrative Region

PSA-CAR - Philippine Statistics Authority-Cordillera Administrative Region

TWG-PGC - Technical Working Group on Philippine Geographic Classification, PSA

# CORDILLERA STATWATCH

INDICATORS	Reference Period	Abra	Apayao <sup>a</sup>	Benguet	Ifugao	Kalinga	Mt. Province
<b>TRANSPORTATION</b> (Source: DOTr)							
Motor Vehicles Registered	4th Quarter 2022	3,696	2,420	10,446	4,456	1,042	2,031
<b>COMMUNICATION</b> (Source: PPC)							
No. of Post Offices	2nd Quarter 2011	28	7	17 d/	8	8	10
No. of Mail Carriers	2nd Quarter 2011	27	5	22 d/	9	7	13
Mail Volume Delivered	2nd Quarter 2011	66,149	3,733	78,490	25,663	25,130	38,795
Revenue Generated	2nd Quarter 2011	735,696	167,186	2,403,695	378,849	520,650	293,891
<b>HEALTH</b> (Source: TWGMCM, PSA)							
Estimated Infant Mortality Rate (per 1,000 livebirths)	1995	58.6	b/	44.6 a/	64.6	63.7	62.9
Estimated Child Mortality Rate (per 1,000 children aged 1-4)	1995	26.0	b/	15.6 a/	30.4	29.7	29.0
Estimated Under-Five Mortality Rate (per 1,000 livebirths)	1995	83.1	b/	59.6 a/	93.0	91.5	90.0
Estimated Maternal Mortality Rate (per 100,000 livebirths)	1995	234.5	b/	159.6 a/	236.4	241.6	240.1
<b>LITERACY</b> (Source: FLEMMS, DepEd/PSA)							
Simple Literacy Rate Household Population 10 Years old & Over	Nov 1994	92.2	b/	96.6 c/	70.6	83.0	83.3
Male	Nov 1994	92.9	b/	98.0 c/	71.0	83.0	86.8
Female	Nov 1994	91.3	b/	95.0 c/	70.1	83.1	78.9
Functional Literacy Rate Household Population 10 to 64 Years old	Nov 1994	90.1	b/	83.9 c/	51.1	70.4	81.1
Male	Nov 1994	89.2	b/	80.0 c/	47.9	68.0	83.8
Female	Nov 1994	91.3	b/	88.7 c/	54.4	73.0	77.5
<b>EDUCATION</b> (Source: DepEd-CAR)							
School Participation Rate (Public)							
Elementary	2014-2015	97.4	91.8	88.3 c/	86.6	97.5	87.9
Secondary	2014-2015	75.2	55.7	57.7 c/	52.3	56.4	65.8
No. of Enrolees (Public Elementary) 1/	2018-2019	34,099	18,209	29,170 c/	30,185	15,490	22,641
No. of Enrolees (Public Secondary) 1/	2018-2019	18,958	11,059	26,420 c/	13,258	8,804	14,494
Teacher to Pupil Ratio	2015-2016	1:23	1:24	1:25 c/	1:26	1:23	1:21
Teacher to Student Ratio	2015-2016	1:24	1:24	1:30 c/	1:21	1:17	1:16
<b>PUBLIC ORDER AND SAFETY</b> (Source: PRO-COR & BFP-CAR)							
Total Crime Volume	4th Quarter 2022	100	36	742 a/	56	115	27
Crime Solution Efficiency (%)	4th Quarter 2022	65.0	61.1	76.8	67.9	69.6	63.0
Fire Incidence	1st Quarter 2023	18	-	64	12	20.0	34
Fire Damages to Property (in thousand pesos)	1st Quarter 2023	4,245.2	-	6,848.4	1,147.0	558.6	19,786.9

1/ includes Kindergarten

a/ includes Baguio City

b/ formerly a sub-province of Kalinga-Apayao (see Kalinga)

c/ excludes Baguio City

## Sources of Data:

BFP-CAR - Bureau of Fire Protection-Cordillera Administrative Region

DepEd-CAR - Department of Education-Cordillera Administrative Region

DOTr-CAR - Department of Transportation-Cordillera Administrative Region

FLEMMS - Functional Literacy, Education and Mass Media Survey, DepEd/PSA

PSA - Philippine Statistics Authority

PPC-CAR - Philippine Postal Corporation-Cordillera Administrative Region

PRO-COR - Police Regional Office-Cordillera Administrative Region

TWGMCM - Technical Working Group on Maternal and Child Mortality

PPC-CAR - Philippine Postal Corporation-Cordillera Administrative Region