



PSA Abra Successfully Conducts April 2025 Labor Force Survey with Rider on Tourism Employment

The Philippine Statistics Authority (PSA) Abra has successfully completed the 2025 Labor Force Survey (LFS) with the integrated Rider on Tourism Employment. This survey round collected critical data on employment, unemployment, and underemployment, along with valuable supplemental information on jobs and activities related to the tourism sector.

Top News

PSA Abra Successfully Conducts April 2025 Labor Force Survey with Rider on Tourism Employment

2024 ASPBI-SICT Survey Operations Officially Underway in Abra

The seamless execution of field operations was made possible through the cooperation of sample households and the dedication of PSA's trained statistical researchers. The inclusion of the Tourism Employment module offers deeper insights into the role of tourism in local and national labor markets, providing vital information to support evidence-based planning and the development of post-pandemic recovery programs for the tourism industry.



2024 ASPBI-SICT Survey Operations Officially Underway in Abra

The Philippine Statistics Authority (PSA) Abra has officially commenced field operations for the 2024 Annual Survey of Philippine Business and Industry (ASPBI), with the 2024 Survey on Information and Communications Technology (SICT) included as a rider. The ASPBI is conducted annually to generate key indicators on the performance, structure, and trends of the country's business and industry sectors. Meanwhile, the SICT, conducted every two years, gathers essential data on the access, availability, and utilization of ICT resources among establishments.

For this year's survey operations, PSA Abra covers a total of 56 sample establishments for the ASPBI and 37 formal establishments for the SICT. The Abra PSO is currently distributing and collecting questionnaires from the sampled establishments. Data processing is scheduled to be completed by October 2025. As always, all collected information will be handled with the utmost confidentiality, in accordance with the Data Privacy Act and PSA's commitment to responsible data management.

PUBLICATIONS



REPUBLIC OF THE PHILIPPINES

STATISTICAL AUTHORITY

APRIL 2025

Abra Quickstat

PROVINCIAL PRODUCT ACCOUNTS

at CONSTANT ANNUAL 2019-2023 PRICES

GDP

A B R A	2019	2020	2021	2022	2023
	20,597,181	20,452,038	22,510,328	24,573,974	25,652,875

PER CAPITA GDP

A B R A	2019	2020	2021	2022	2023
	83,638	82,667	90,596	98,506	102,447

POVERTY THRESHOLD, POVERTY INCIDENCE
AND MAGNITUDE POOR FAMILIES

ABRA	2018	2021	2023
Per Capita Poverty Threshold in (Php)	12,383	14,319	16,629
Poverty Incidence among Families (%)	29.5	21.5	19.6
Poverty Incidence among Population	12,406	14,321	16,656
Magnitude of Poor Population	17.44	12.48	11.69

ANNUAL GROWTH RATE

A B R A	2010-2015	2010-2020	2015-2020
	0.52	0.67	0.84

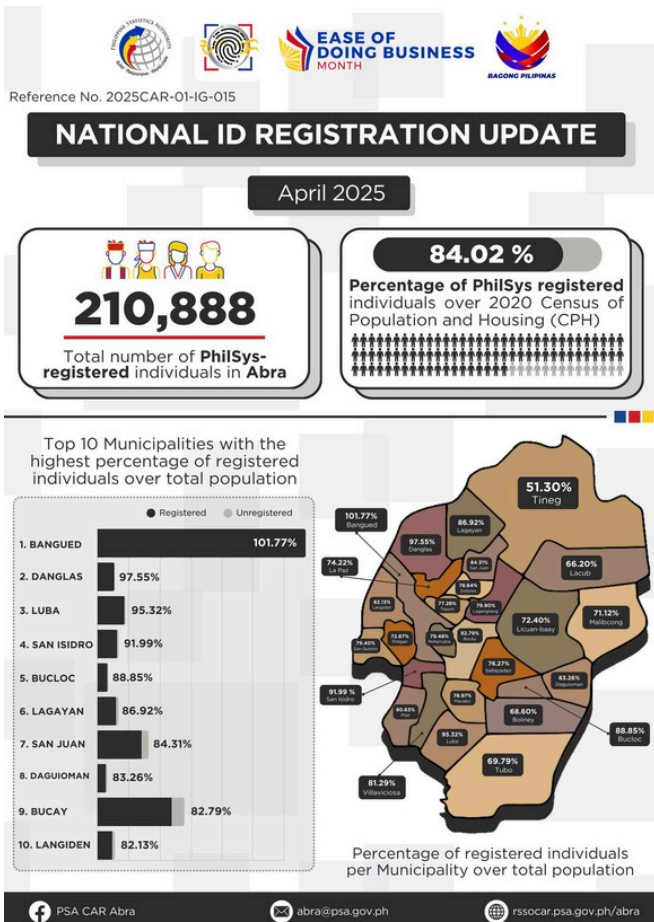
INFLATION RATE (%) ALL ITEMS			
A B R A	MARCH 2024	FEBRUARY 2025	MARCH 2025
	2.8	2.7	0.7%
PURCHASING POWER OF the PESO			
A B R A	MARCH 2024	FEBRUARY 2025	MARCH 2025
	0.81	0.80	0.80
CONSUMER PRICE INDEX ALL ITEMS 2024-2025			
A B R A	JANUARY		121.2
	FEBRUARY		121.5
A B R A	MARCH		123.5
	APRIL		123.5
A B R A	MAY		122.7
	JUNE		122.1
A B R A	JULY		125.1
	AUGUST		125.7
A B R A	SEPTEMBER		125.8
	OCTOBER		125.8
A B R A	NOVEMBER		127.4
	DECEMBER		127.4
A B R A	JANUARY		121.2
	FEBRUARY		124.8
A B R A	MARCH		124.4
	APRIL		-
A B R A	MAY		-
	JUNE		-
A B R A	JULY		-
	AUGUST		-
A B R A	SEPTEMBER		-
	OCTOBER		-
A B R A	NOVEMBER		-
	DECEMBER		-

Major and Other Fruits Production by Province, CAR: 2022-2023					
ABRA	2022	2023			
MAJOR	7,035.0	5,564.2			
OTHER	3,196.7	2,896.6			
Fruits Production and Area Harvested by Province, CAR: 2023					
ABRA	2023				
PRODUCTION (MT)	8,460.8				
AREA HARVESTED	1,215.3				
LABOR AND EMPLOYMENT 2023-2024					
2023	Labor Force Participation Rate	Employment Rate	Un-employment Rate	Under-employment Rate	Visible Under-employment Rate
JANUARY	66.00	66.00	6.76	16.60	6.67
FEBRUARY	66.00	66.00	6.83	16.60	6.76
MARCH	66.00	66.00	6.76	16.60	6.76
APRIL	66.00	66.00	6.83	16.60	6.87
MAY	66.00	66.00	6.83	16.75	6.80
JUNE	66.00	66.00	6.80	16.60	7.20
JULY	66.00	66.00	6.83	16.60	6.80
AUGUST	66.00	66.00	6.83	16.75	7.50
SEPTEMBER	66.00	66.00	6.80	16.75	6.80
OCTOBER	66.00	66.00	6.80	16.75	6.80
NOVEMBER	66.00	66.00	6.80	16.60	6.80
DECEMBER	66.00	66.00	6.87	16.9	7.20
2024	Labor Force Participation Rate	Employment Rate	Un-employment Rate	Under-employment Rate	Visible Under-employment Rate
JANUARY	66.00	66.00	6.87	16.90	7.20
FEBRUARY	66.00	66.00	6.80	16.81	7.71
MARCH	66.00	66.00	6.80	16.87	6.80
APRIL	66.00	66.00	6.80	16.80	8.20
MAY	66.00	66.00	6.83	9.80	6.80
JUNE	66	66.00	6.82	16.80	6.87
JULY	66.87	66.26	6.79	16.11	6.88
AUGUST	66.81	66.86	6.88	16.36	6.79
SEPTEMBER	66.69	66.34	6.80	16.80	6.80
OCTOBER	66.27	66.00	6.82	16.60	7.11
NOVEMBER	66.00	66.75	6.28	16.81	6.81
DECEMBER	66.00	66.00	6.80	16.90	6.82

 DAPF, Bldg. Road No. 1, C. S. Ramon St.,
Davao City, Philippines

 davaoregion.gov.ph

 davaoregion.gov.ph



EDITORIAL BOARD

ANGELEE ANN B. PEREZ
Editor-in-Chief

LEIDA MARGARITA B. PURUGGANAN
MARIA EDNA B. BALLERA
PRINCES STEPHANIE M. BELLEZA
JONNEL P. AVEÑO
Contributors

FELIXBERTO B. PERDIDO
Adviser

03/03

APRIL 2025 ISSUE

#ABRAMazingBLITZ