



## Cordillera posts 6.9% economic growth

The 2023 economic performance of the Cordillera Administrative Region (CAR) news conference was conducted last 25 April 2024 at Paragon Hotel, Baguio City. The report on regional economic performances were simultaneously conducted by the 17 regions in the country where the results were presented at exactly 10:00 AM.

Regional Director Villafe P. Alibuyog (PSA-CAR) reported that the economy of the Cordillera grew by 6.9% in 2023 with an estimated economic value of 361.1 billion pesos. The economic growth of the region was faster than the national growth rate of 5.5% and the fourth fastest among all the regions of the country behind Region VII (Central Visayas) with 7.3%, Region VI (Western Visayas) with 7.2%, and Region 1 (Ilocos Region) with 7.1%.

The economy is comprised of three major industries namely: Agriculture, Forestry, and Fishing; Industry; and Services. Of the 361.1-billion-peso Gross Domestic Product (GDP) of CAR, Services accounted for more than half with 68.1% share, followed by Industry with 24.2% share, and Agriculture, Forestry, and Fishing with 7.7% share.

Among the 16 production industries, the top contributors to the growth were Accommodation and food service activities with 1.5 percentage points; Wholesale and retail trade; repair of motor vehicles and motorcycles with 1.4 percentage points; and Manufacturing with 0.7 percentage points.

The main drivers of the growth of Cordillera's economy in terms of expenditure were Household Final Consumption Expenditure with 3.7 percentage points, Net exports to the Rest of the World with 1.9 percentage points and Net exports to the Rest of the Philippines with 1.6 percentage points. *(Continued on page 2)*

## PSA-CAR extends its services through BPSF

The Philippine Statistics Authority – Cordillera Administrative Region (PSA-CAR) and PSA Benguet extended their services on civil registration and Philippine Identification System (PhilSys) during the Bagong Pilipinas Serbisyo Fair (BPSF) at Rooms 109 and 110 of the College of Teacher Education Building, Benguet State University, La Trinidad, Benguet last 21-22 April 2024.

*(Continued on page 2)*

## UP Baguio first to access PSA-CAR Data Enclave Center

The University of the Philippines – Baguio (UPB) accessed the Data Enclave Center (DEC) of the Philippine Statistics Authority – Cordillera Administrative Region (PSA-CAR) at the 3rd Floor CTLL Building, Baguio City last May 09, 2024. *(Continued on page 3)*

## CAR Inflation accelerates further in March 2024

The inflation rate in the Cordillera Administrative Region (CAR) continued to accelerate from 4.0% in March 2024 to 4.6% in April 2024. Philippine Statistics Authority (PSA) - CAR Regional Director Villafe P. Alibuyog reported that the main sources of acceleration of the April 2024 inflation were Housing, Water, Electricity, Gas and Other Fuels which contributed a 55.5% share, Food and Non-Alcoholic Beverages with a 29.7% share, and Transport with a 14.3% share.

*(Continued on page 3)*

## PSA-CAR Conducts First Quarter 2024 Regional Data Review for Agricultural Statistics

The Philippine Statistics Authority – Cordillera Administrative Region (PSA-CAR) concluded its 5-day First Quarter Regional Data Review on Agricultural Statistics last April 15-19, 2024 at the PSA-CAR Conference Room, 3rd Floor CTLL Building, Abanao Extension, Baguio City.

*(Continued on page 4)*



## Cordillera posts 6.9% economic growth (From page 1)



The report was followed by a statement of OIC Assistant Regional Director Jose H. Dado, Jr. (National Economic and Development Authority-CAR) and statements from Regional Director Noel Neil Q. Malimban (Bangko Sentral ng Pilipinas North Luzon Regional Office), Project Evaluation Officer IV Charles A. Picpican (Department of Agriculture-CAR), Assistance Chief of Planning and Design Juliet W. Chan (Department of Public Works and Highways-CAR), Information Officer III Glonica Joyce C. Favorito (Department of Trade and Industry-CAR), and Regional Governor Deimler O. Cuyan (Philippine Chamber of Commerce and Industry).

The news conference was attended by 76 participants from Regional Line Agencies (RLAs), Local Government Units (LGUs), academe, and the media. -RJPAquino



## PSA-CAR extends its services through BPSF (From page 1)



PSA-CAR issued a total of 1,189 civil registry documents, comprising 941 birth certificates, 199 marriage certificates, 34 advisory on marriages/certificates of no marriage, and 15 death certificates. They awarded 107 free birth certificates under the Birth Registration Assistance Project and accommodated 449 clients for counselling.

PSA Benguet registered 404 clients for PhilSys Step 2 Registration, received 5 surrendered PhilIDs for replacement, issued 307 ePhilIDs, and updated the demographic information of 79 clients.

The BPSF was a two-day service caravan organized by the national secretariat consisting of the Office of the President, the Office of the Speaker, the Presidential Communications Office (PCO), and the House of Representatives. It aims to bring the government closer to the people, bringing together in one venue all the government offices and their services for residents of CAR or any person who wants to avail of public services.

The serbisyo fair also featured a Pasalamat Concert last 21 April 2024 with performances by Cordillera nightingale Ingrid Payaket and special guests Bamboo, Darren Espanto, Rockstеды, and ILT Band. -RJPAquino





## UP Baguio first to access PSA-CAR Data Enclave Center (From page 1)



The data enclave is a highly secured and specialized facility through which confidential data such as identifiable information and establishment-level data from censuses and surveys are stored and can be accessed. The said facility is only available at the regional offices of the PSA as of the moment.

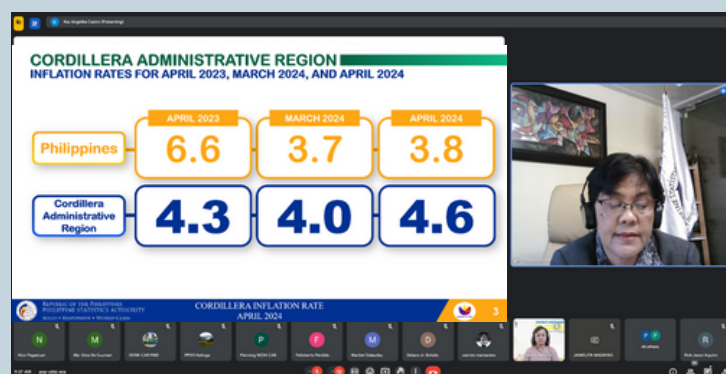
PSA-CAR made an effort to establish its Data Enclave Center (DEC) to promote efficiency through a proactive initiative in catering to its stakeholders through digital platforms. This is also to enable a positive environment to access open and free data and to centralize its data access channel.

UPB was the first institution to use the DEC facility where Ms. Herald Margarette A. Canoy, Mr. Renz Venielle L. Lamayo, and Mr. Edgard Antonio C. Suguitan of the Department of Economics and Political Science, College of Social Sciences accessed data on the 2010 Annual Survey of the Philippine Business and Industry (ASPBI) to the latest available data from the data enclave for research purposes.



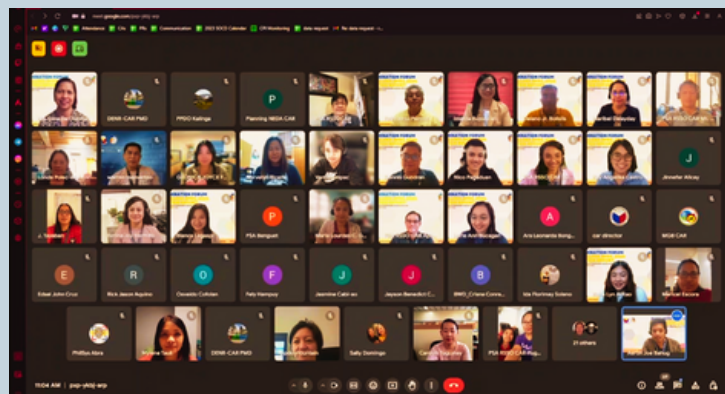
Their output data and requested documentation files from the data enclave during their access to the facility was approved by the PSA – Central Office for use of the client. -RPMiclat

## CAR Inflation accelerates further in April 2024 (From page 1)

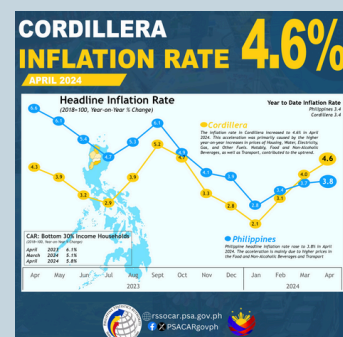
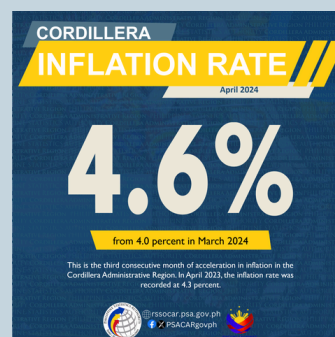


The major contributors to the April 2024 inflation were Food and Non-Alcoholic Beverages with a percent share of 55.1%, Housing, Water, Electricity, Gas and Other Fuels with 10.3%, and Transport with 10.2%.

Ifugao posted the highest inflation among the six provinces and one Highly Urbanized City (HUC) in CAR with 7.2%, while Mountain Province had the lowest with 1.8%. The Purchasing Power of the Peso (PPP) in CAR with 2018 as base year remained at 81 centavos in April 2024 since September 2023. This means that one peso in 2018 was worth 81 centavos from September 2023 to April 2024.



The Chief Statistical Specialists of the PSA Provincial Statistical Offices in CAR, presented the inflation report of their respective provinces. The online dissemination of the March 2024 Cordillera Inflation Report was conducted last 17 May 2024 via Google Meet. This was attended by 71 participants from Regional Line Agencies (RLAs), Local Government Units (LGUs), academe, and the media. -RJPAquino



## PSA-CAR Conducts First Quarter 2024 Regional Data Review for Agricultural Statistics

(From page 1)



The process of the said activity serves as a quality control system institutionalized to guarantee the utmost accuracy of data and estimates derived from agricultural surveys. It addresses various aspects such as the sampling frame, survey design, survey instruments, and concerns related to data collection and processing. This quarterly review focuses on agricultural data and specifically targets the aggregated regional data on Animals, Poultry and Egg, Crops, Palay, and Corn Production Surveys reviewed by province: Abra, Apayao, Benguet, Ifugao, Kalinga, and Mountain Province.

This process involves a thorough analysis of survey estimates that are generated from clean data. Information and indicators such as historical data and auxiliary information, including changes in agricultural structure and land conversion, are utilized to ensure that the survey estimates accurately reflect the agricultural situation in the provinces of CAR.

The findings of the regional data review will be presented during the National Data Review and will undergo further validation by commodity specialists from the Crops Statistics Division, Livestock and Poultry Statistics Division, Fisheries Statistics Division, and Price Statistics Division of the Economic Sector Statistics Service of the PSA. The final validated estimates form part of the reports on the Value of Production in Philippine Agriculture and Fisheries, and will be inputs to the preparation of Gross Regional Domestic Product and Provincial Product Accounts.

The various agricultural surveys also address the data needs of key stakeholders in the agriculture sector, including the National Economic and Development Authority (NEDA), Department of Agriculture (DA), and attached agencies such as the Philippine Rice Research Institute (PRRI) and the Philippine Council for Agriculture and Fisheries (PCAF). Through rigorous validation and review processes, PSA-CAR strives to provide stakeholders with quality information essential for informed decision-making and policy formulation for the agricultural sector. -WBMamanteo

# GANGSA



A **gangsa** (gong) is an indigenous musical instrument of the Igorots ("people of the mountain") of the Cordillera region. It is usually played during cultural celebrations, rituals and festivities. It is a cultural symbol of fellowship and unity among the Igorots.

## Editorial Team

### Editor-in-Chief

Aldrin Federico R. Bahit, Jr., CSS

### Associate Editor

Rick Jason P. Aquino, IO I

### Section Editor

Gerald A. Tolito, RO IV

### Contributors

Warren B. Mamanteo, SSS  
Reymarson P. Miclat, ISA I  
Rick Jason P. Aquino, IO I

### Adviser

Villafe P. Alibuyog  
Regional Director

📍 CTLL Building, 141 Abanao Extension, Rizal Monument, Baguio City

🌐 [rssocar.psa.gov.ph](http://rssocar.psa.gov.ph)

📘 [PSACARgovph](https://www.facebook.com/PSACARgovph)

### Office of the Regional Director

☎ (074) 446-9412 ✉ [rssocar@psa.gov.ph](mailto:rssocar@psa.gov.ph)

### Statistical Operations and Coordination Division

☎ (074) 442-7449 ✉ [rssocarsocd@psa.gov.ph](mailto:rssocarsocd@psa.gov.ph)

### Civil Registration and Administrative Support Division

☎ (074) 443-7763 ✉ [rssocarcrasd@psa.gov.ph](mailto:rssocarcrasd@psa.gov.ph)

DISCLAIMER: Some photos/graphics used in this publication were downloaded from the internet. This publication does not take ownership of the said photos/graphics.