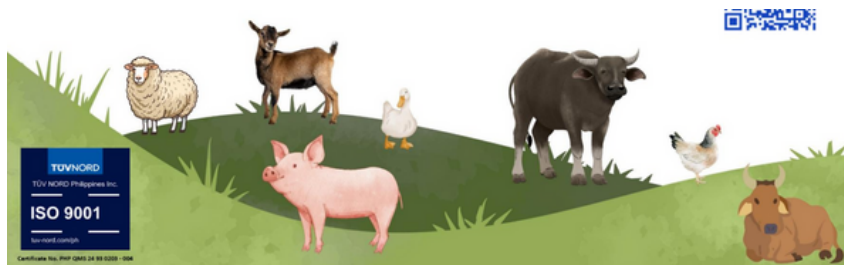


Field visits on Breeding Stocks and Orchard Development (BSOD) in Ifugao



On March 4–5, 2025, technical staff from the Philippine Statistics Authority (PSA) Central Office and the PSA Cordillera Administrative Region conducted a field visit to household farms as well as livestock and poultry establishments in the Province of Ifugao.

The Field Visits on Breeding Stocks and Orchard Development (BSOD), scheduled for March, May, and June 2025, aim to refine specific parameters that will contribute to the overall revision and rebasing of the Philippine System of National Accounts (PSNA). These visits, covering all regions except the National Capital Region, will gather regional structures and parameters to serve as the foundation for generating Regional Supply and Use Tables (SUT). As part of this activity, the questionnaires will include parameters and statistics relating to the Agriculture, Forestry, and Fishing (AFF) industry, alongside data for environmental accounts.



(Continued on page 2)

CAR inflation decelerates in February 2025



The inflation rate in the Cordillera Administrative Region (CAR) decelerated from 4.1% in January 2025 to 2.5% in February 2025.

(Story on page 3)

PSA-CAR conducts 2025 Operational Training on Crops Production Survey 2nd Level Training



PSA-CAR conducted the 2025 Operational Training on Crops Production Survey (CrPS) 2nd Level Training at the 3rd floor PSA-CAR conference room, CTLL Building, Abanao extension, Baguio City last 26 to 28 February 2025.

(Continued on page 2)

PSA-CAR hosts 2nd Level Training for 2025 Fisheries Survey Operations



PSA-CAR conducted the 2025 Operational Training on Fisheries Surveys Second Level Training at the 3rd floor PSA-CAR conference room, CTLL Building, Abanao extension, Baguio City last 06 to 07 March 2025.

(Continued on page 3)

Field visits on Breeding Stocks and Orchard Development (BSOD) in Ifugao

(Continued from page 1)

A survey questionnaire was prepared that is designed to gather information and statistics on animals yielding repeat products, specifically data items on agricultural and livestock, as well as data items related to the environment and natural resources.



The activity has the following specific objectives:

- Improve the parameters used in the estimation of AFF industry, BSOD, and environmental accounts;
- Present the initial results to the Macroeconomic Accounts Service (MAS) Management Committee;
- Simulate and use the results using the updated parameters and statistics;
- Present the comparison of old and new estimates; and
- Prepare recommendations and documentation report of the new estimation methodology using the updated parameters and information.



RSC-CAR approves PSA-CAR conducts 2025 Operational Training on Crops Production Survey 2nd Level Training

(Continued from page 1)

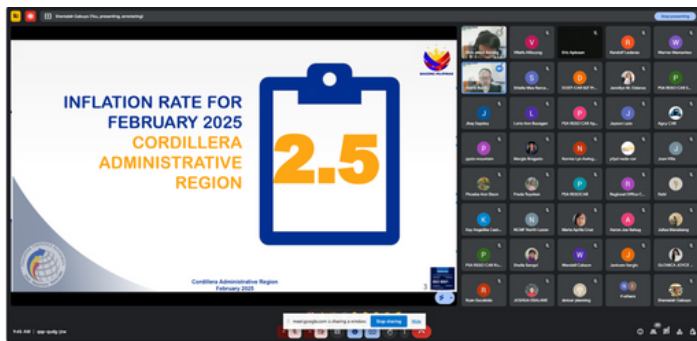


PSA-CAR Supervising Statistical Specialist Warren B. Mamanteo and PSA-Benguet Statistical Analyst Stonewall M. Santiago served as resource speakers during the 3-day training. The participants were the CrPS Provincial Focal Persons alternates of the six (6) provinces in CAR, the alternate Regional Focal Person, and two (2) Contract of Service Workers (COSW). The objective of the training primarily aims to equip participants, and to provide information on the background of the surveys, uses of data, operational concepts and definition of terms, and the use of Computer-Aided Personal Interview (CAPI) and Data Processing System.



The data generated from CrPS are inputs to the Value of Production in Philippine Agriculture and Fisheries, and accordingly to the preparation of the Gross Domestic Product (GDP). Moreover, the survey supports the data needs of planners, policy and decision makers, and other stakeholders in the agriculture sector particularly the National Economic and Development Authority (NEDA), Department of Agriculture (DA) and its attached agencies such as Bureau of Plant Industry (BPI) and Philippine Council for Agriculture and Fisheries (PCAF), and the general public.

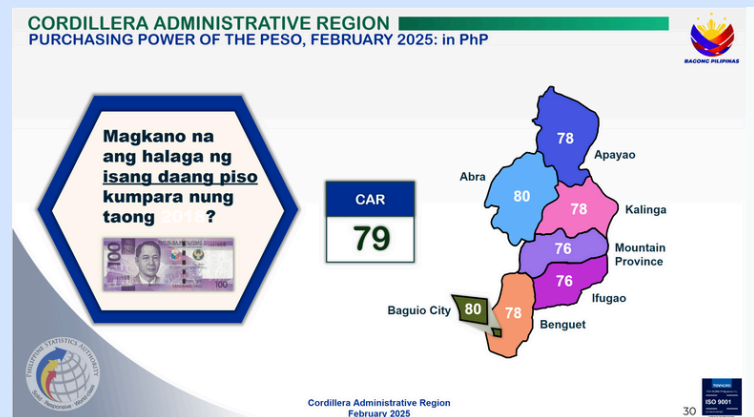
CAR inflation decelerates in February 2025



The inflation rate in the Cordillera Administrative Region (CAR) decelerated from 4.1% in January 2025 to 2.5% in February 2025. Philippine Statistics Authority (PSA) - CAR Chief Statistical Specialist Aldrin Federico R. Bahit Jr. reported that the main sources of deceleration of the February 2025 inflation were Food and Non-Alcoholic Beverages with 63.3% share; Housing, Water, Electricity, Gas and Other Fuels with 29.7% share; and Transport with 2.6% share.

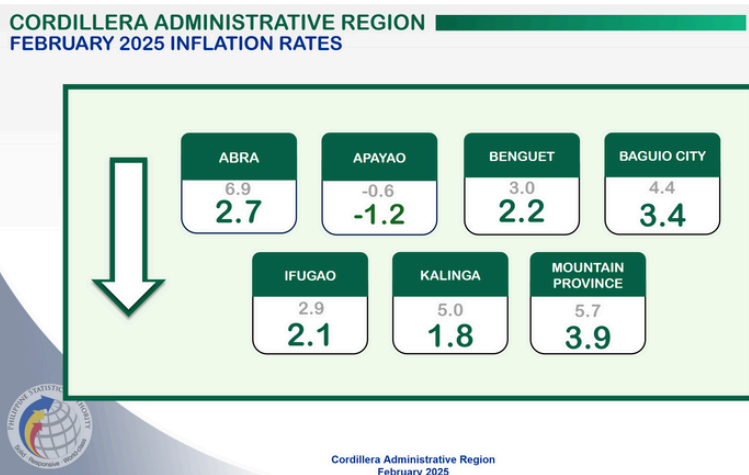
The major contributors to the February 2025 inflation rate of 2.5% were Food and Non-Alcoholic Beverages with 42.2% share; Housing, Water, Electricity, Gas and Other Fuels with 30.3% share, and Personal Care, and Miscellaneous Goods and Services with 6.6% share.

Mountain Province had the highest inflation rate among the six provinces and one Highly Urbanized City (HUC) in CAR with 3.9%. This was followed by Baguio City with an inflation rate of 3.4%, Abra with 2.7%, Benguet with 2.2%, Ifugao with 2.1%, and Kalinga with 1.8%. The province of Apayao posted a deflation rate of 1.2%.



The Purchasing Power of the Peso (PPP) in CAR with 2018 as base year went up from 78 in January 2025 to 79 centavos in February 2025. This means that one peso in 2018 was worth 79 centavos in February 2025.

The Chief Statistical Specialists of the PSA Provincial Statistical Offices in CAR and/or their representatives presented the inflation report of their respective provinces. The online dissemination of the February 2025 Cordillera Inflation Report was conducted last 14 March 2025 via Google Meet. This was attended by 55 participants from Regional Line Agencies (RLAs), Local Government Units (LGUs), academe, and the media.



PSA-CAR hosts 2nd Level Training for 2025 Fisheries Survey Operations

(Continued from page 1)



Supervising Statistical Specialist Warren B. Mamanteo and PSA-Benguet Statistical Analyst Diana P. Nabor served as resource speakers during the two-day training. The participants were the fishery provincial focal persons, alternates of the six (6) provinces in CAR, and two (2) contract of service workers from the RSSO-CAR.

Chief Statistical Specialist Aldrin Federico R. Bahit, Jr. emphasized the importance and uses of agricultural statistics as basis for the implementation of plans and programs for evidenced-based policy and decision-making. He added that every training level is important, especially now that the PSA is gearing towards adapting the survey result and use of the Computer Aided Personal Interview. He advised everyone to take care of one's health while performing their duties and responsibilities in the government service.

The PSA generates statistics for freshwater municipal aquaculture and municipal inland fishing. Quarterly Inland Municipal and Quarterly Aquaculture Surveys are conducted in sample aquaculture farms and sample inland fishing households.

The respondents of the surveys are aquafarm operators, fishermen or other knowledgeable members of the household. Generated quarterly fisheries production is included in the quarterly data review process of the PSA at the provincial, regional, and national levels. After the data validation, preliminary estimates are made available to data users.

Fisheries are one of the economic sectors of the country. The statistics generated through the conduct of fisheries surveys serve as input to the (1) compilation of national accounts, (2) estimation of performance of agriculture, (3) policy making and program implementation, and (3) research and studies.

GANGSA



A *gangsa* (gong) is an indigenous musical instrument of the Igorots ("people of the mountain") of the Cordillera region. It is usually played during cultural celebrations, rituals and festivities. It is a cultural symbol of fellowship and unity among the Igorots.

Editorial Team

Editor-in-Chief

Aldrin Federico R. Bahit, Jr., CSS

Associate Editor

Rick Jason P. Aquino, IO I

Contributors

Warren B. Mamanteo, SSS
Rick Jason P. Aquino, IO I

Adviser

Villafe P. Alibuyog
Regional Director

📍 CTLL Building, 141 Abanao Extension, Rizal Monument, Baguio City

🌐 rssocar.psa.gov.ph

📘 [psagovphcar](https://www.facebook.com/psagovphcar)

Office of the Regional Director

☎ (074) 446-9412 ✉ rssocar@psa.gov.ph

Statistical Operations and Coordination Division

☎ (074) 442-7449 ✉ rssocarsocd@psa.gov.ph

Civil Registration and Administrative Support Division

☎ (074) 443-7763 ✉ rssocarcrasd@psa.gov.ph

DISCLAIMER: Some photos/graphics used in this publication were downloaded from the internet. This publication does not take ownership of the said photos/graphics.