

29th NSM celebration in CAR promotes tourism statistics and sustainable tourism development

Cordillera celebrated the 29th National Statistics Month in October 2018 with the conduct of regionwide activities that promote sustainable tourism development and use of tourism statistics. This is in line with the 2018 NSM theme "Exploring Philippine Wonders in Numbers: Statistics Towards Sustainable Tourism Development." The theme emphasized the contribution of the tourism sector in the economy and the need for obtaining reliable statistics on tourism to come up with appropriate programs and policies for sustainable development, and address challenges in the sector.

Statistical activities for the tourism sector in support to the Philippine Development Plan (PDP) 2017-2022, AmBisyon Natin 2040, and the Sustainable Development Goals (SDGs) are outlined in the Philippine Statistical Development Plan (PSDP) 2018-2023 as well as the CAR Regional Statistical Development Program (RSDP) 2017-2023.

The Banaue Rice Terraces Restoration Drive in Ifugao, one of the NSM activities spearheaded by the Regional Statistics Committee (RSC) - CAR and the PSA RSSO CAR fostered the value of preserving the local prime tourist destination sites in the region, and emphasized sustainable tourism development. Other activities conducted also showcased the unique Cordilleran culture and tradition through songs and dances, and creative arts through the infographics display on tourism statistics. [continued on page 4](#)



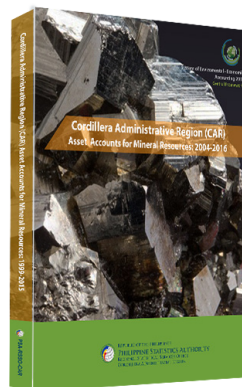
Mineral Asset Accounts 2004-2016 for CAR completed

The Environment and Natural Resource Accounting (ENRA) Project Team of CAR completed the compilation of the environmental asset accounts on mineral resources of the Cordillera region in December 2018. The period of accounting for the mineral resources covered a span of 13 years from 2004 to 2016. The ENRA Project Team is composed of CAR regional offices of the Philippine Statistics Authority (PSA), National Economic and Development Authority (NEDA), Department of Environment and Natural Resources (DENR), Mines and Geosciences Bureau (MGB), and the Watershed and Water Resources Research Center (WWRRC).

The CAR Asset Accounts for Mineral Resources 2004-2016 was compiled following the System of Environmental-Economic Accounting (SEEA) 2012 – Central Framework. The same framework was used in 2017 in compiling the asset accounts for land and timber resources of the Cordillera region covering the period 1999 to 2015. The result of the compilation on

Asset Accounts for Mineral Resources were reviewed and approved by the ENRA Steering Committee and Regional Statistics Committee, and presented

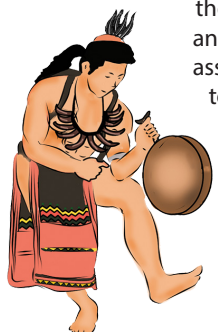
through a regional dissemination forum held last December 20, 2019 at Hotel Elizabeth, Gibraltar, Baguio City. The publication on the Cordillera Administration Region (CAR) Asset Accounts for Mineral Resources: 2004-2016 prepared by the Statistical and Coordination Division (SOCD) of PSA-CAR will be released by 2019.



The compilation of the asset accounts on mineral resources for CAR is once again a significant accomplishment that will guide policy-makers, project implementers and regional stakeholders in preparing environmental policies and programs, and in safeguarding the environment. Further, the establishment of databanks on the environment and the resource accounts on environment statistics will assist in monitoring and implementing regional programs to fulfil the target Sustainable Development Goals (SDG).

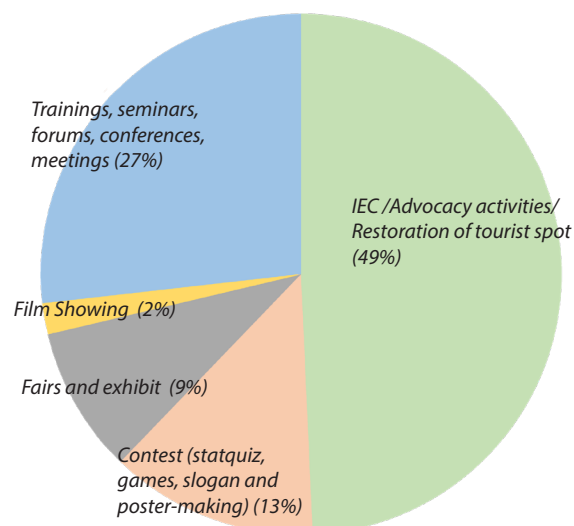
MINING AND QUARRYING
accounted for
2.9%
of the region's
GROSS
REGIONAL
DOMESTIC
PRODUCT

5,156
workers
were employed in the
MINING and QUARRYING
SECTOR



"A gangsa (gong) is an indigenous musical instrument of the Igorots ("people of the mountain") of the Cordillera region. It is usually played during cultural celebrations, rituals and festivities. It is a cultural symbol of fellowship and unity among the Igorots."

29th NSM Regional Calendar of Activities



The celebration of the National Statistics Month in October 2018 has the theme, "Exploring Philippine Wonders in Numbers: Statistics Towards Sustainable Tourism Development." Focused on this year's theme, the RSC-CAR and the PSA RSSO CAR conducted NSM activities that emphasized sustainable tourism development. Among the identified activities in the 2018 CAR Regional NSM Calendar is the restoration of a local prime tourist destination - the Banaue Rice Terraces. The calendar also included the promotion of local tourism through showcasing of unique Cordilleran culture and tradition, infographics display on tourism statistics, among others.

The 2018 CAR NSM Calendar is composed of 209 activities submitted by a total of 44 regional line agencies, State Universities and Colleges (SUCs) and private institutions, Local Government Units (LGUs) and private organizations nationwide. Almost half (49%) of the NSM-enrolled activities were advocacy/ IEC programs that included a restoration drive of a world-famous Banaue Rice Terraces in Ifugao province. Trainings, seminars, forums and meetings comprised 27%. Contests that include statistical quizzes, poster-making and slogan contest comprised 13%, while fairs and exhibits including Infographics display were 9% and 2% for film-showing on tourism and statistics.

The following agencies/offices and private organizations enrolled activities for the 29th NSM celebration:

1. Bangko Sentral ng Pilipinas (BSP)- La Union Regional Office
2. Bureau of Fire Protection (BFP) - CAR
3. Cooperative Development Authority (CDA) - CAR
4. Civil Service Commission (CSC) - CAR
5. Department of Environment and Natural resources (DENR) - CAR
6. Department of Education (DepEd) - CAR
7. Department of Health (DOH) - CAR
8. Department of Labor and Employment (DOLE) - CAR
9. Department of Tourism (DOT) - CAR
10. Department of Social Welfare and Development (DSWD) - CAR
11. Department of Public Works and Highways (DPWH) - CAR
12. Department of Trade and Industry (DTI) - CAR
13. Police Regional Office Cordillera (PROCOR)
14. Department of Interior and Local Government (DILG) - CAR
15. Mines and Geosciences Bureau (MGB) - CAR
16. Department of Information Technology (DICT)
17. Philippine Information Agency (PIA)
18. Philippine Statistics Authority (PSA) - CAR
19. National Economic and Development Authority (NEDA)
20. National Irrigations Administration (NIA)
21. National Nutrition Council (NNC)
22. Baguio Water District (BWD)
23. Baguio General Hospital and Medical Center (BGHMC)
24. PNP-Abra Provincial Police Office
25. PNP-Apayao Provincial Police Office
26. PNP Baguio City Police Office
27. PNP-Benguet Provincial Police Office
28. PNP-Ifugao Provincial Police Office
29. PNP-Kalinga Provincial Police Office & MPCs/CPS
30. Apayao Provincial Statistics Committee (PSC)
31. LGU- Benguet/PPDO-Benguet
32. LGU Ifugao
33. Ifugao Provincial Statistics Committee (PSC)
34. Baguio City Government and Baguio CPDO
35. LGU-Mountain Province and PPDO-MP
36. Mountain Province Science and Polytechnic College (MPSPC)
37. Benguet State University (BSU)
38. Saint Louis University (SLU) – Progressive Economists' Solidarity (PESO)
39. PSO Abra
40. PSO Apayao
41. PSO - Benguet
42. PSO- Ifugao
43. PSO - Mountain Province
44. PSO Kalinga

Highlights of the 29th NSM Celebration in CAR

A. Whole Month Display/Hanging of the 29th NSM Streamer

The RSC-CAR member, regional line agencies, private organizations and establishments displayed the 29th NSM streamer in front of their office buildings and premises for the whole month of October.... continued on page 3



29th NSM Regional from page 2**B. Launching of the 29th NSM celebration at the Baguio City Hall grounds, 1 October 2018**

The 29th celebration of the NSM was formally launched on October 1, 2018 at the Baguio City Hall grounds after the Monday Morning Flag Ceremony with the unfurling of the NSM streamer. PSA RSSO CAR Regional Director Villafe P. Alibuyog delivered her NSM message to more than 100 participants that included the Baguio City Mayor, Vice Mayor, members of the City Council, Baguio City Hall employees, officers and staff of the Baguio City Police Office, and selected senior citizens.



In her message, Director Alibuyog said that the tourism sector is considered one of the economic drivers of the country since the Philippines is known for its various tourist spots. The Cordillera region is not left behind with its rich flora and fauna that attract many foreign as well as local tourists. Baguio City is also the gateway to other existing and still flourishing community-based tourism sites in other areas of the Cordillera.

The City has launched itself as a Creative City in February 2018 under the United Nations Creative Cities Network, and this undertaking will further boost the creative industries unique in the City and the Cordillera region as a whole, which in turn will fuel local tourism development.

Since the industry contributes significantly to the economy, there is need to obtain reliable statistics on tourism in order to come up with feasible and appropriate programs and policies that will further lead to its sustainable development. These statistics will help policymakers address the challenges in the sector.

**C. Infographics Display at the Baguio City Hall Main Lobby, 1 October 2018**

After the NSM launching program, Director Alibuyog led the Ribbon-Cutting of the Infographics display/exhibit at the Baguio City Hall main lobby together with City Mayor Mauricio Domogan, Vice Mayor Bilog, SOCD Chief Aldrin Federico R. Bahit, Dr. Carmel P. Matabang of NEDA-CAR, Mr. Rogerson Dennis Fernandez of DSWD-CAR, and representatives from the Baguio City Planning and Development Office (CPDO). The ceremony was also graced by members of the City Council and a Senior Citizen Official For A Day (SCOFAD). The infographics were prepared by the Staff of the PSA RSSO CAR and featured tourism, household-based, agricultural, economic and social statistics of the Cordillera region. The data for the infographics were contributed by the Department of Tourism (DOT) – CAR and RSC-CAR member agencies. The infographics aims to make statistical information accessible to the public and communicate complex data into simple, effective and creative visual presentations consisting of images, charts and graphs that are easily understood by the viewers.

.... continued on page 4

Vital Statistics

	2016	2017
Registered Births		
Cordillera Administrative Region	39,531	39,1557
Abra	4,967	5,303
Apayao	3,218	3,330
Baguio City	10,298	9,866
Benguet	7,294	7,075
Ifugao	4,002	4,018
Kalinga	5,607	5,691
Mt. Province	4,145	4,274
Registered Marriage		
Cordillera Administrative Region	9,658	9,247
Abra	1,509	1,027
Apayao	733	636
Baguio City	1,665	1,704
Benguet	2,654	2,705
Ifugao	1,132	1,198
Kalinga	1,076	1,173
Mt. Province	889	804
Registered Deaths		
Cordillera Administrative Region	8,905	8,823
Abra	1,552	1,509
Apayao	657	643
Baguio City	2,415	2,488
Benguet	1,653	1,561
Ifugao	772	784
Kalinga	922	926
Mt. Province	861	834

Projected Population('000)

	2019	2020
Philippines	108,274	109,948
Cordillera Administrative Region	1,912	1,945
Abra	262	264
Apayao	136	139
Benguet*	854	868
Ifugao	233	237
Kalinga	242	247
Mt. Province	186	190

note: * - including Baguio City

Literacy^{7/}

	2008	2015
Cordillera Administrative Region		
Basic Literacy Rate	94.8	94.9
Functional Literacy Rate	89.2	91.2

note: 7/ - Source: Functional Literacy, Education, and Mass Media Survey

29th NSM from page 1

The CAR regional stakeholders were likewise apprised on CAR tourism statistics and on the current program thrusts of the PSA on tourism statistics through conduct of lectures and dissemination forums on the Philippine Tourism Satellite Accounts (PTSA). The lectures were delivered by Resource Speakers from the Statistical Operations and Coordination Division of the PSA RSSO CAR headed by Mr. Aldrin Federico R. Bahit, Jr.

The PTSA Framework, Concepts, and Definitions, TSA Estimates, and Philippine Initiative on Measuring Sustainable Tourism (MST) were presented to RSC-CAR members, representatives from the regional line agencies and students of selected universities. Mr. Bahit discussed the PSA's initiatives on the estimation of regional tourism satellite accounts in addition to the environmental accounts which are anchored in the 2008 System of National Accounts. The estimation of these accounts present the contribution of the tourism sector to the regional and national economy.

Fish production in Cordillera generates 2,419.2 MT

Fish production in the Cordillera Administrative Region (CAR) increased by 12.3%, from 2,154 metric tons (MT) in the First Semester of 2017 to 2,419.2 MT during the same period in 2018, contributed mainly by Aquaculture. Except for the provinces of Kalinga and Mountain Province, aquaculture fish production in most of the CAR provinces registered positive performance.

The Philippine Statistics Authority (PSA) generates statistics for freshwater municipal aquaculture and municipal inland fishing. The Quarterly Inland Municipal and Quarterly Aquaculture Surveys are conducted in sample aquaculture farms and sample inland fishing households. continued on page 9

29th NSM Regional.... from page 3



D. Audio Visual Presentation on Tourism, 4 October 2018

As hosts of the NSM Opening Ceremony, the Department of Tourism (DOT) – CAR showed audio visual presentations to promote tourism industry and local tourism sites in the Cordillera region. The AVP featured prime tourist destinations and newly opened community-based tourism sites located in the 6 CAR provinces and in Baguio City.

In the country, the Cordillera is considered as among the top tourist destination of local and foreign tourists. The data from the DOT-CAR reported that about two million tourists, mostly Filipinos visited the Cordillera region in 2017. Almost 95% of these tourists or about 1.86 million were domestic tourists, while foreign visitors coming from the United States of America, France, Korea, China and Germany reached 110,000.

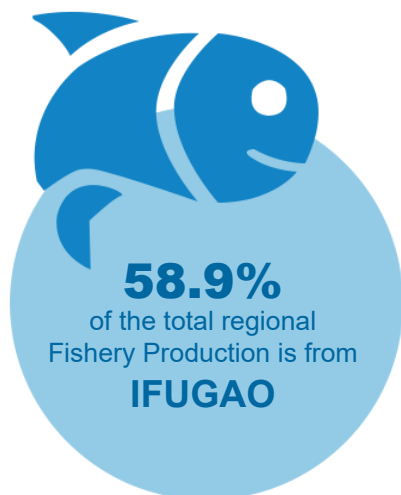
By area/location of the most visited places by tourists, Baguio City which is considered the Summer Capital of the Philippines accounted 77.0% of the total tourist arrivals. Mountain Province, came far second with 8.5% share, followed by Kalinga at 6.0%, Benguet at 4.0%, Ifugao at 3.6%, and Abra at 0.02%. The province of Apayao had a 2.8% occupancy rate. Overall, accommodation establishments in the region had 40.9% average occupancy.

E. Cordillera Cultural Performance at the Newtown Plaza Hotel, Baguio City, 4 October 2018



To promote Cordilleran unique culture as one of the tourist attractions, the University of the Cordilleras (UC), Baguio City dance group - the Saeng Ya Kasay Cultural Ensemble performed cultural songs and dances. Their performances were a mix of the native songs and dances of the different ethno-linguistic groups of the Cordillera.

The dances show the creativity and artistry of the different ethnic groups in the region. The dances serve as recreation, socialization, and entertainment, to appease their ancestors and gods to cure sickness, to ward-off bad luck, misfortunes and continued on page 5



29th NSM Regional.... from page 4

natural calamities, grant favors such as fertility and productive harvest, and also to celebrate milestones and success in life.

F. 29th NSM Kapihan sa Baguio, 4 October 2018

To encourage support from regional stakeholders for this year's 29th NSM celebration and to disseminate the theme focus for the year on the importance of generating tourism statistics to achieve sustainable tourism development, a Kapihan sa Baguio was held at the Newtown Plaza Hotel, Leonard Wood Road, Baguio City. The kapihan was in collaboration with the Philippine Information Agency (PIA) – CAR and the host for the NSM Opening Cermeony, the Department of Toursim (DOT) – CAR. The kapihan was anchored by Director Helen R. Tibaldo of PIA-CAR and K-Lite FM Station Manager Johnny Dela Cruz.

The members of the panel were headed by PSA RSSO CAR Regional Director Villafe Alibuyog. Other panelists include Director Beta Cervantes of the Bangko Sentral ng Pilipinas (BSP) – La Union Regional Office (LURO), OIC Director Jovita Ganongan of DOT-CAR, the Chairman of the Committee on Tourism of Baguio City Councilor Elmer O. Datuin, Chief of PSA RSSO CAR Statistical Operations and Coordination Division Aldrin Federico R. Bahit, Jr., Chief Economic Development Specialist of the Research Division of the National Economic and Development Authority (NEDA)-CAR Dr. Carmel P. Matabang, Supervising Tourism Operations Officer of Baguio City Tourism Office Engr. Aloysius C. Mapalo, Chief of Planning & Management Division of the Department of Environment and Natural resources (DENR) – CAR Engr. Francis Basali, and Engr. Rowena Foronda of the Department of Public Works and Highways (DPWH)- CAR. The kapihan was attended by various media outfits and line agencies.



G. Infographics Display at the Newtown Plaza Hotel, Baguio City, 4 October 2018

The RSC-CAR members, staff of regional line agencies, hotel employees, and customers/clients had the opportunity to appreciate the Infographics displayed at the lobby of the Newtown Plaza Hotel last October 4, 2018. continued on page 6



29th NSM Regional.... from page 6

H. Launching of the Publications on the 2018 WAM and 2018 RSET, 4 October 2018

The launching of two important annual publications of the PSA RSSO CAR, namely the 2018 Statistical Handbook on Women and Men (WAM) in the Cordillera Administrative Region and the 2018 Regional Social and Economic Trends (RSET) was one of the activities to meaningfully celebrate the 29th NSM. Director Villafe P. Alibuyog and SOCD Chief Aldrin Federico R. Bahit, Jr. led the launching and was witnessed by the OIC Director of DOT-CAR, Directors of the BSP-LURO and PIA-CAR, Key Staff of NEDA-CAR, DPWH-CAR, DENR-CAR, Baguio City Tourism Officials, and representatives from the regional line agencies.



I. Banaue Rice Terraces Restoration Drive, Ifugao, 16 October 2018

The Banaue Rice Terraces Restoration Drive in Ifugao conducted last October 16, 2018 highlights the 29th NSM celebration by giving importance to preserving a local tourism site for sustainable tourism. The Banaue Rice Terraces located in Banaue, Ifugao, one of the world's oldest terraces is renowned as the "Eighth Wonder of the World." Preservation of the rice terraces is important since side from one of the sources of income of Ifugao farmers, the tourist attraction also generates employment and revenue for local businesses. Due to inclement weather conditions and soil degradation, the rice terraces were damaged and need to be maintained.

The restoration drive was organized DOT-CAR in partnerships with RSC-CAR, PSA-CAR and LGU-Ifugao. The activity was led by the Chief of the Civil Registration and Administrative Support Division (CRASD) Adrian Cerezo, and PSO-Ifugao Staff Joseph Aclibon. A total of 30 participants composed of staff from PPDO-Benguet, provincial offices of the DENR, DepEd, and DOT, the local tourism office, Provincial Health Office and other LGU offices participated in the restoration drive. continued on [page 7](#)



29th NSM Regional from page 6

J. Dissemination Forum on the Philippine Tourism Satellite Accounts, 19 October 2018

To update CAR regional stakeholders on tourism statistics and current initiatives of the PSA on tourism statistics, a Dissemination Forum on the Philippine Tourism Satellite Accounts (PTSA) was conducted on October 19, 2018 at the PSA-CAR Conference Hall. The Tourism Satellite Accounts: Framework, Concepts, and Definitions were presented by Assistant Statistician (AS) Cherry D. Kiaw. AS Dennis D. Gundran presented the Philippine Tourism Satellite Accounts (TSA) Estimates; while the Philippine Initiative on Measuring Sustainable Tourism (MST) was discussed by Statistical Analyst Jeanniel I. Barcayan.



The participants were from the RSC-CAR member agencies, the Baguio City Tourism Office, Benguet Provincial Tourism Office, tourism associations in Baguio City - the Hotel and Restaurant Association of Baguio (HRAB), Baguio Association of Hotels & Inns (BAHAI), and local business establishments.

K. Saint Louis University NSM Symposium and Infographics Exhibit, 22 October 2018

A Tourism Statistics Symposium was conducted at the Saint Louis University Maryheights Campus, Bakakeng Baguio City on October 22, 2018. Mr. Aldrin Federico R. Bahit, Jr. served as Resource Speaker on Tourism Statistics in the Cordillera Administrative Region. He also delivered insights on the NSM theme and overview of the month-long activities of the NSM celebration.



The symposium was followed by the Ribbon-Cutting of the NSM Exhibit with displays of infographics on tourism statistics located at the main lobby of the SLU Maryheights campus. The ceremony was attended by the OIC Regional Director Jovita A. Ganongan of DOT-CAR, Mr. Aldrin Federico R. Bahit, Jr. and Ms. Jocelyn O. Tayaban of PSA-CAR, Dean of the School of Accountancy and Business Management Dr. Reynaldo S. Bautista, the Department Head of the Business Economics Department and the Adviser of the Progressive Economists' Solidarity (PESO) Ms. Eleonor P. Garoy.

The Infographics Exhibit had more than 500 visitors, and generated positive feedbacks from viewers. continued on page 8

Cordi farmers harvested 235 thousand MT of crops

Cordillera Administrative Region (CAR) produced a total of 235,420.0 metric tons (MT) of crops during the First Semester of 2018. These excluded rice and corn.

Crop production in CAR increased by 2.5% or 5,790.2 MT during first semester of 2018 compared to that of 229,629.8 MT during same period in 2017.

Crops are classified in three types: fruit crops, non-food and industrial commercial crops (NFICCs) and vegetable crops. Crop production by type in the Cordillera region for the First Semester 2018 were distributed as follows: 75.4% or 177,559.7 MT of vegetables, 16.8% or 39,638.3 MT of NFICCs, and 7.7% or 18,222.0 MT of fruit crops.

Out of the region's total crop production, the province of Benguet contributed the largest share with 65.1% or 153,313.1 MT, followed by Kalinga province with 13.2% or 30,986.2 MT. Abra shared 6.3% or 14,820.8 MT, while Ifugao, Apayao and Mountain Province contributed 5.9%, 5.0% and 4.6%, respectively.

Out of the 235,420.0 MT of crops production in CAR during the reference period, cabbage was largely produced with 41,773.6 MT or 17.7%. White potato followed with 13.5% or 31,744.0 MT; sugarcane with 12.2% or 28,806.8 MT; and carrots and chayote fruit with 8.2% and 7.0%, respectively.

By province, Abra produced 14,820.8 MT during the first semester of 2018. The crop production decreased by 1.9% or 288.3 MT compared to 15,109.1 MT of output during first semester of 2017. The top three crops produced by the province were bananas with 26.6% (3,936.7 MT) contribution to the total crop production of the province, followed by squash fruit with 13.6 % or 2,016.0 MT, and tobacco with 10.9% or 1,613.4 MT.

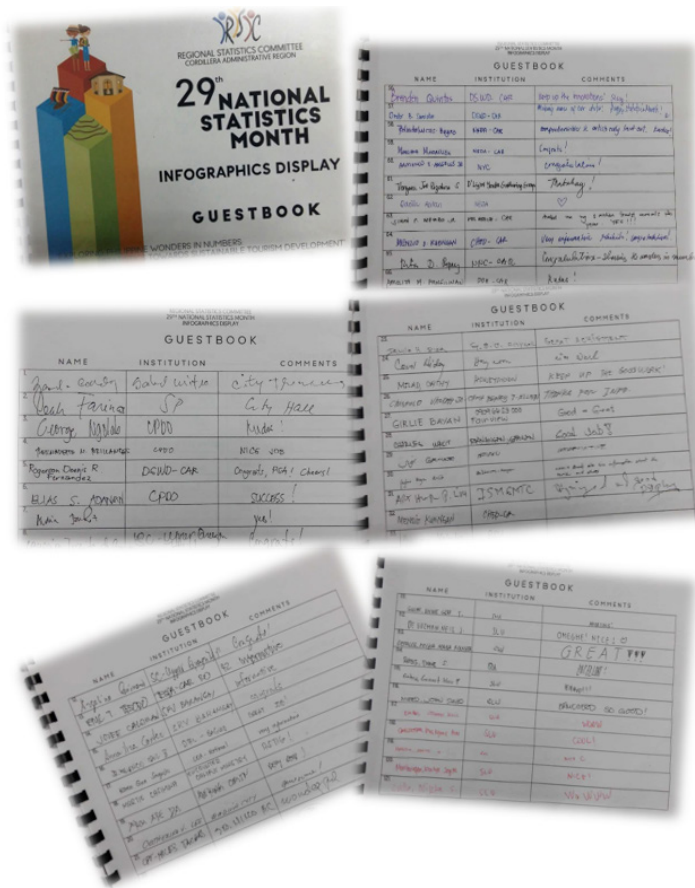
.... continued on page 9

CABBAGE



is the
major crop
produced
in CAR
with
**41,773.6
MT**

29th NSM Regional from page 7



Division garnered the second place while the third place was won by a student from Guinzadan National High School representing Mountain Province Schools Division.



N. Closing Ceremony, PSA-CAR Office, 5 November 2018

The closing program of the 29th NSM was held on November 5, 2018 at the PSA-CAR Regional Office. The program was scheduled on October 31, 2018 at PSA-CAR Office but was moved to November 5, 2018 due to Typhoon Ompong, a severe weather disturbance affecting the region from October 29-31, 2018. The Bangko Sentral ng Pilipinas (BSP)-La Union Regional Office (LURO) was the host agency for the closing ceremony.

An audio visual presentation on tourism and fellowship hour with stat trivia games participated by the staff from the regional line agencies, students, SOCD and CRASD staff were the highlights of the closing ceremony.

L. Statistics Symposium, Benguet State University, 24 October 2018

Mr. Aldrin Federico R. Bahit, Jr. served as Resource Speaker on Tourism Statistics during the statistics symposium, part of the NSM celebration of the Benguet State University (BSU) held at the Strawberry Hall, College of Home Economics and Technology. A total of 66 participants attended the symposium composed of the students of the Bachelor of Science in Applied Statistics, and the Faculty members.



M. Regional Statistics Quiz, PSA-CAR Conference Hall, 26 October 2018

The Regional Statistics Quiz is an annual NSM activity conducted by the DepEd-CAR in partnership with PSA-CAR. The statistics quiz for the year was participated by the high school students. There were six competitors for the quiz representing the different Schools Division of CAR. Each Schools Division had one student-participant together with their respective coach.

The champion for the 29th NSM Regional Statistics Quiz came from Baguio City National High School representing the Baguio City Schools Division. A senior student representing Tabuk City, Kalinga Schools



Fish production from page 4

The respondents of the survey were aquafarm operators, fishermen or other knowledgeable members of the household. Generated quarterly fisheries production is included in the quarterly data review process of the PSA at the provincial, regional and national levels. After the data validation, preliminary estimates were made available to data users.

Out of the total regional production of 2,419.2 MT, 1,833.1 MT (75.8%) came from aquaculture and 586.1 MT (24.2%) came from inland fishery production. For the First Semester of 2018, Ifugao was consistently the top producer with 1,425.2 MT accounting 58.9% of the total regional fishery production. Abra province came second with 13.8% share, followed by Benguet with 11.1% share, Kalinga with 9.2% share, and Apayao with 6.7% share. Mountain Province contributed the smallest share in the fishery production of the region with an output of 7.1 MT comprising only 0.3% of the total fish production of CAR.

Municipal Inland Production

Inland municipal fishing refers to fishing in inland waters like lakes, rivers, and dams. Using simple gears and fishing boats some of which are non-motorized with a capacity of less than three (3) gross tons, or fishing not requiring the use of fishing boats.

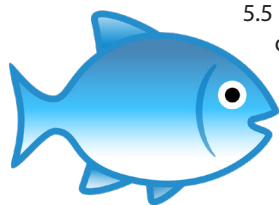
Cordillera municipal inland fishing output during the First Semester of 2018 was 1586.1 MT, comprising 24.2% of the total fish production in the region. Kalinga and Abra were the top inland fishing provinces with 140.8 MT and 140.5 MT of fish caught, comprising 24.0% each to the total inland fishery production of the region. Apayao followed with 20.4% share while Ifugao came fourth with 19.8% share. The provinces with the smallest shares were Benguet and Mountain Province with 11.5% and 0.3% shares, respectively.

Aquaculture Production

Aquaculture is a fishery operation involving all forms of raising and culturing of fish and other fishery species in fresh, brackish and marine water areas. During the First Semester of 2018, CAR registered an aquaculture production of 1,833.1 MT with an estimated area harvested of 290.6 hectares. Aquaculture dominated the region's fisheries accounting for 75.8% of the total fish production.

Ifugao province posted the highest production with 1,309.0 MT harvested from an area of 152.4 hectares. Benguet was a distant second with 201.8 MT with an area harvested of 20.1 hectares, while Mountain Province had the least production in the region with only 5.5 MT from an area of 1.9 hectares. In terms of percentage distribution in aquaculture production, Ifugao contributed 71.4%. Benguet came second with 11.0% share. The share of other provinces to total aquaculture production were: Abra with 10.5%; Kalinga with 4.4%; and Apayao with 2.3%. Mountain Province had the smallest

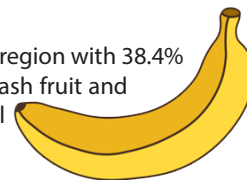
share of 0.3%.



Cordi farmers from page 7

Abra

Abra was the top producer of bananas in the region with 38.4% of the total regional banana production, squash fruit and tobacco with 58.3% and 99.7% to the regional total production, respectively.



Apayao

The province of Apayao produced 11,815.0 during first semester of 2018. Crop production of the province increased by 8.7% or 944.0 MT compared to the 10,871.0 MT produced in first semester of 2017.

The top three crops produced by the province were cassava with 76.3% (9,020.5 MT) contribution to the total production, followed by banana with 7.9% or 933.4 MT production and squash fruit with 6.5% or 766.4 MT output. Apayao was the top producer of cassava with 61.1% of the regional cassava production; second top producer of squash fruit with 22.2%; and third top producer of banana with 9.10%.



Benguet

Among the provinces, Benguet had the largest crop production with 153,313.1 MT during the reference period sharing 65.1% to the total crop production of the region owing to wide farming areas and temperate weather suitable to producing highland vegetable crops. Crop production in the province decreased by 1.4% or 2,241.3 MT during first semester of 2018 compared to the 155,554.4 MT output in 2017.



The top three crops produced by the province were cabbage with 25.4% or 38,925.0 MT contribution to the total crop production of the province, followed by white potato with 18.7% or 28,600.0 MT and carrots with 11.9% or 18,209.0 MT.



Benguet was the top producer in the region for the following crops: cabbage with 93.2% share; white potato with 90.1%; carrots with 94.2%; and chayote fruits with 97.8%.

Ifugao

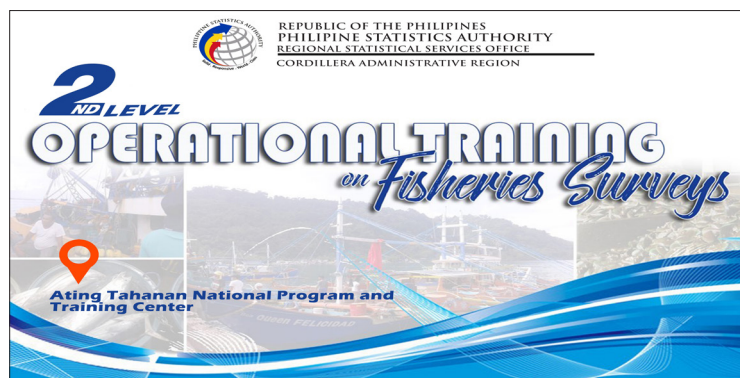
Ifugao produced 13,772.4 MT of crops during the first semester of 2018 accounting to 5.9% share to the total crop production in the region. Crop production of the province increased by 14.5% or 1,745.6 MT during first semester of 2018 as compared to the 12,026.7 MT production in 2017.

The top three crops produced by the province were cassava with 38.6% (5,315.5 MT) contribution to the total production of the province, followed by banana with 22.6% or 3,106.5 MT, and camote with 8.3% or 1,140.9 MT.

Kalinga

Kalinga produced a total of 30,986.2 MT of crops during the first semester of 2018. Production increased by 21.0% or additional 5,371.2 MT compared to the 25,615.0 MT crop production of the province in same period in 2017.

The top three crops produced by the province were sugarcane with 28,107.0 MT or 90.7% contribution to the total production of the province, followed by banana with 2.9%.... continued on page 11



Food and accommodation establishments in CAR employ 279 thousand workers

Accommodation and food service (AFS) sector employed 279,048 workers in the country in 2016 based from the results of the 2016 Annual Survey of Philippine Business and Industries (ASPI). These establishments had a total number of 5,971. Employment in

CAR had the highest portion of compensation from total expenses of AFS establishments, with PHP658.7 million out of PHP3.1 billion total cost or equivalent to 21.8% share. Other regions with compensation share from total expense higher than the national

Average Monthly Compensation of AFS Workers by Activity, Philippines:2016



accommodation and food establishments increased by 3.9% from the 268,655 employees in 5,492 business

establishments in 2015. Almost all (99.4%) those employed in the AFS sector were paid employees. Although this declined by 0.1 percentage point from 99.5% in 2015, the number of paid workers increased by 10,128 during the period.

Two in three workers or 65.7% in the AFS sector were employed in restaurants and mobile food establishments with a total of 183,319 persons employed in 4,312 establishments. This was followed short-term accommodation activities with 82,227 persons employed in 1,279 establishments. Workers in beverage serving activities comprised 3.0%, event catering and other food services with 1.8% and other accommodation services with 0.1%.

Short term accommodation activities had the highest number of workers per establishment with an average of 64 employees per establishment in 2016, followed by event catering and other food service with 56 employees per establishment.

On the other hand, beverage serving activities had the least number of workers with an average of 29 employees per establishment. By region, AFS establishments in MIMAROPA employed the most with an average of 53 workers per establishment. CAR and Western and Central Visayas followed with an average of 52 and 51 workers per establishment, respectively.

Total compensation of AFS workers in 2016 reached PHP 53.1 billion that comprised 17.0% of the PHP312.3 billion total expense of AFS establishments in 2016, an increase of 11.8% from PHP279.2 billion in 2015. The rest were spent for other costs such as taxes, job contracts, goods, fees and other operational expenses.

figure were MIMAROPA (19.2%), Western Visayas (18.5%), CALABARZON (18.4%), Central Visayas (18.2%), Negros Island (18.0%), NCR (17.3%) and Bicol region (17.2%).

In 2016, the national average annual compensation per worker in the AFS industry was PHP191,375 or about PHP16,000 per month. In 2015, the annual average compensation of workers was PHP170,475 or monthly average of PHP14,206.

In CAR, the average annual compensation per AFS worker was PHP113,775 or a monthly average of PHP9,480 in 2016. This decreased by 0.6% from the PHP114,498 in 2015.

CAR establishments earned a total of 4.3 billion pesos in 2016

Income generated from accommodation and food services reached PHP368.3 billion, an increase of 10.9% from PHP332.0 billion in 2015. Two-thirds of the income (65.7%) were derived from restaurants and mobile food service activities and 30.5% from short-term accommodation services.

AFS establishments in NCR contributed 49.6% to the total national income of the industry, sharing PHP182.8 billion. The rest of the regions shared the other half of AFS income generated in 2016. CAR establishments earned PHP4.3 billion or 1.2% of the total.

The income per expense of all AFS establishments was registered at 1.18 in 2016. This means the revenue of these

CAR
had the highest
income per expense
ratio of **1.36%**

establishments net of all expenses in the production and delivery of services is 18 percent. This was lower than the figure

a year ago with 1.19 income per expense. Event catering and other food service had an income per expense ratio of 1.25 while short term accommodation activities resulted to an income per expense of 1.21.

Other accommodation activities had the least income per expense ratio of 1.05. Among regions, CAR had the highest income per expense ratio of 1.36. This was an improvement from the figure of 1.23 income per expense in 2015. Regions with high income expense ratio include Bicol (1.30), Calabarzon (1.27), Cagayan Valley (1.23), Mimaropa (1.22), Negros Island (1.21) and Central Visayas (1.20).

Labor productivity in NCR reaches PHP675 million per worker

Value added of AFS establishments was pegged at PHP135.2 billion, an increase of 9.3% from 2015. Restaurant and mobile food service shared the largest fraction of value added with 56.6% or PHP76.5 billion while short term accommodation activities contributed 40.1% or PHP54.2 billion. NCR establishments contributed 58.5% to the total value added of AFS businesses in the country with PHP79.1 billion. This was followed by Central Visayas (8.8%) and Central Luzon (6.8%). The value added per total employment of the AFS industry increased by 5.3% from PHP460,289 in 2015 to PHP484,469 in 2016. These measured the labor productivity of the establishments.

PHP113,775
Average annual compensation
per AFS worker in
CAR

Higher productivity was seen in short term accommodation and event catering and other food services, with PHP659,440 and PHP509,469 per employee, respectively. Restaurants and mobile food services closely followed with estimated labor productivity of PHP417,531.

Meanwhile, beverage serving and other accommodation activities had labor productivity of PHP219,079 and PHP166,976, respectively. With highest generated income, NCR establishments had labor productivity of PHP675,642 despite being labor intensive in the AFS industry..... [continued on page 11](#)

NCR
establishments contributed
58.5% to the total AFS
business in the country

Cordi farmers from page 9

or 888.5 MT and coffee with 2.6% or 801.2 MT.

Mountain Province

Mountain Province produced 10,712.6 MT of crops during First Semester of 2018. This was 4.6% of the regional crop production. The province's crop production increased by 2.5% (259.0 MT) compared to the 10,453.6 MT during the First Semester of 2017. The top three crops produced by the province were white potato with 28.9% or 3,101.1 MT, followed by cabbage with 24.4% or 2,610.6 MT, and carrots with 8.3% or 893.1 MT. Mountain Province was the second top producer of the region for the following crops: white potato with 9.8% of the regional white potato production, cabbage with 6.2%, and carrots with 4.6%.

Major/Top Crop Production in CAR: 1st Semester 2018

Crop	Production (MT)	Percent share to regional total
Cabbage	41,773.6	17.7
White/Irish Potato	31,744.0	13.5
Sugarcane	28,806.8	12.2
Carrots	19,339.4	8.2
Chayote fruit	16,540.1	7.0
Others	97,216.1	41.3
Total	235,420.0	100

Note: Detail may not add up due to rounding off.

Source: Philippine Statistics Authority

Food and from page 10

Least labor productivity was estimated in ARMM and Zamboanga Peninsula with PHP169,779 and PHP180,115 per worker, respectively.

Sales from e-commerce in AFS industry at PHP5.6 billion

Sales via the internet boosted the AFS industry with PHP5.6 billion receipts in 2016 registering an increase of 14.9% from the PHP4.9 billion sales from e-commerce in 2015. Online bookings with businesses in short-term accommodation activities increased electronic sales by PHP5.5 billion or 97.9% of the total e-commerce sales of AFS.

Restaurants and mobile food services contributed PHP119.3 million, while other AFS activities did not report any online sale transactions. Electronic transactions were dominant in NCR establishments, contributing a total of PHP3.4 billion sales in 2016. This comprised 60.6% of the total e-commerce sales of all AFS establishments. Central Visayas and CALABARZON regions also contributed PHP993.4 million and PHP419.7 million, respectively. CAR booked PHP22.4 million online transactions, contributing only 0.4% to total e-commerce sales. Northern Mindanao, Caraga and ARMM did not report any online transactions.

PSA Quality Policy

We, the Philippine Statistics Authority, commit to deliver relevant and reliable statistics and efficient civil registration services to our client and stakeholders.

We adhere to the UN Fundamental Principles of Official Statistics in the production of quality general-purpose statistics and commit to deliver civil registration services in accordance with the laws, rules and regulations, and other statutory requirements.

We endeavor to live by the established core values and corporate personality of the PSA, and adapt the appropriate technology in the development of our products and delivery of services.

We commit to continually improve the effectiveness of our Quality Management System to ensure equitable development towards improved quality of life for all.

Alcoholic Beverages & Tobacco had the highest inflation rate in December 2018 at 21.5%.

The quarterly newsletter is prepared by the Statistical Operations and Coordination Division (SOCD) of PSA-CAR

Editor-in-Chief

Aldrin Federico R. Bahit Jr., OIC-Chief

Assistant Editor-in-Chief

Jezi R. Boado, IO

Managing Editor

Camille Carla U. Beltran, SSS

Staff/Contributors

Jocelyn O. Tayaban, SrSS
Betina Joy V. Bermillo, SS II
Ma. Gina V. De Guzman, SS II
Warren B. Mamanteo, SS II
Jeannel I. Barcayan, SA
Cherry D. Kiaw, AS
Dennis D. Gundran, AS
Brozybroz Y. Mateo, AS
Stephen Estigoy, JO
Kay Angelika M. Castro, JO

Layout Artist

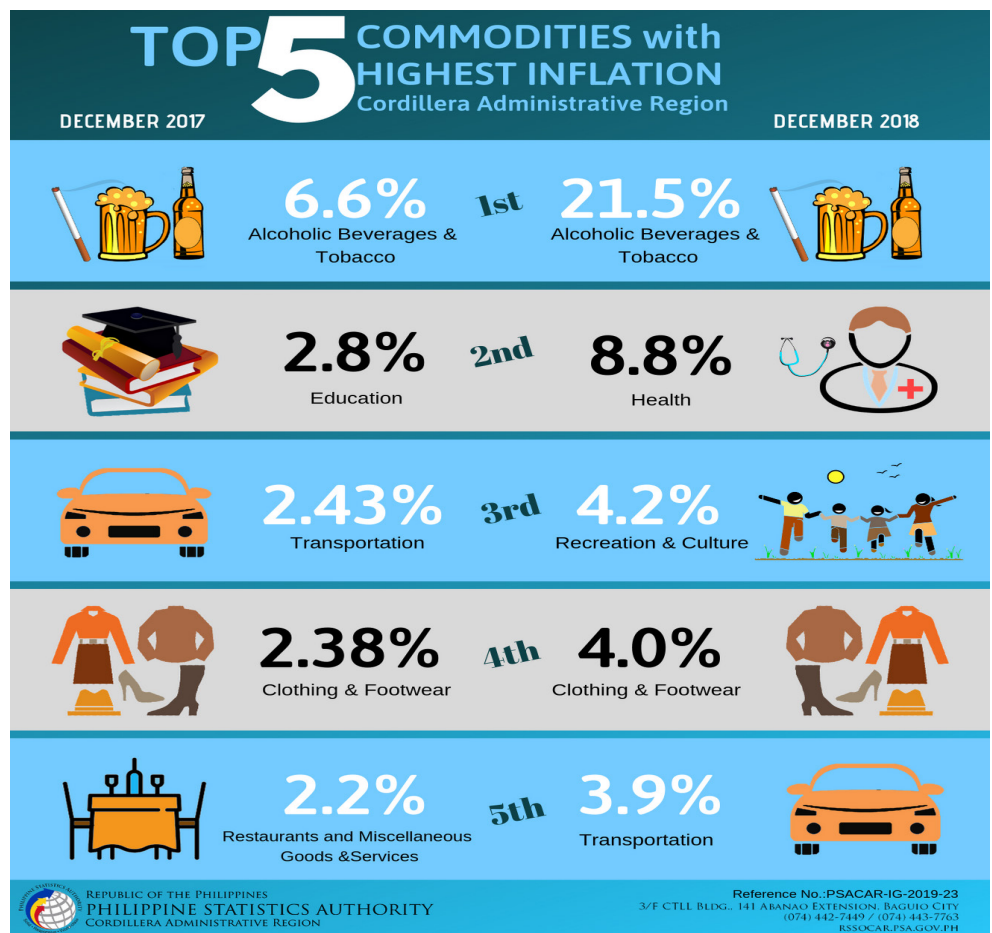
Winsky B. Salisa, ISA

Adviser

Villafe P. Alibuyog, Regional Director

Address:

3F, 141 CTLL Bldg. Abanao Extension
Rizal Monument, Baguio City 2600
Telephone No.: (074) 443-7763
Email: socd_psacar@yahoo.com



REPUBLIC OF THE PHILIPPINES
PHILIPPINE STATISTICS AUTHORITY
CORDILLERA ADMINISTRATIVE REGION

Reference No.: PSACAR-IG-2019-23
3/F CTLL BLDG., 141 ABANAO EXTENSION, BAGUIO CITY
(074) 442-7449 / (074) 443-7763
RSSOCAR@PSA.GOV.PH

NOTICE TO THE PUBLIC

The Philippine Statistics Authority, as the primary implementing agency to carry out the provisions of Republic Act No. 11055 or the Philippine Identification System Act (PhilSys Act), has not yet started the registration of applicants for the PhilID.

Also, kindly take note that under Section 7 (c) (3) of RA 11055, the initial application and issuance as well as the renewal of the PhilID for citizens shall be free of charge.

Therefore, entities or persons collecting fees and representing themselves as authorized registration centers are not in any way connected to the Agency.

Relevant announcements will soon be made.

For more information, you can reach us at 09173128368 or email us at philsys-pmo@psa.gov.ph.

LISA GRACE S. BERSALES, Ph.D.
Undersecretary
National Statistician and Civil Registrar General



REPUBLIC OF THE PHILIPPINES
PHILIPPINE STATISTICS AUTHORITY
REGIONAL STATISTICAL SERVICES OFFICE
CORDILLERA ADMINISTRATIVE REGION

joins in the celebration of the

CIVIL REGISTRATION MONTH
FEBRUARY 2019

**THEME: "Inclusive and Responsive CRVS:
Working Smarter through Innovation"**



REPUBLIC OF THE PHILIPPINES
PHILIPPINE STATISTICS AUTHORITY
CORDILLERA ADMINISTRATIVE REGION

**JANUARY 2019 LABOR FORCE SURVEY &
2018 FAMILY INCOME AND EXPENDITURE
SURVEY (Visit 2)**

December 17-22, 2018

Ritz Hotel, Legarda Road,
Baguio City



Support the...

**2018 Census of
Philippine Business & Industry**

