



PSA-CAR is 6-time Top RSSO

The Philippine Statistics Authority – Cordillera Administrative Region (PSA-CAR) claimed the number one spot for the sixth consecutive year as top Regional Statistical Services Office (RSSO) during the recently conducted PSA Awards 2022 in celebration of PSA's 10th Anniversary last 12 September 2023 at Seda Vertis North, Quezon City, Manila

During the awarding ceremony, PSA-CAR received the following awards:

- 1st Place Best in Statistical Operation
- 1st Place Best in Information Dissemination
- 1st Place Best in Partnership and Linkages
- 1st Place Financial, Human Resource and Administrative Services
- 2nd Place Best in Statistical Planning and Coordination
- 2nd Place Best in Statistical Frameworks and Indicator Systems
- 4th Place Best in Civil Registration
- Special Award for Provincial Product Accounts
- Special Award for Physical Asset and Flow Accounts

Mountain Province Provincial Statistical Office bagged 5th Place in the Top 15 Best Provincial Statistical Offices (PSO) with the following special awards: 1st Place in Best in Statistical Operations, and 2nd Place in Best in Financial, Human Resource and Administrative Services. Benguet Provincial Statistical Office ranked 10th of the Top 15 PSOs. Ifugao Provincial Statistical Office got a Special Award as 2nd Place in Best in Statistical Operations. All the Cordillera PSOs received Special Awards for Provincial Product Accounts.

PSA-CAR would like to express its gratitude to all of its partners and stakeholders for their continuous support and help with all of its statistical, civil registration and PhilSys endeavors.

In this issue...

2 CAR places 5th in Best RSC Awards 2023

Grand Caravan and Exhibits in celebration of PSA's 10th Anniversary

PSA-CAR launches its Data Enclave Center

4 Online Dissemination of the August 2023 Inflation Rate and CPI of CAR

PSA-CAR conducts 2022 NDHS Regional Dissemination Forum

PSA-CAR presents the Socioeconomic Indicators for Wage Review during the RTWPB Meeting

CAR provinces join in the data review and validation of SCR of the Palay Production February 2023 Round

6 3rd Quarter IACCRVS Meeting
RSC-CAR Adopts 3 Resolutions in Q3 2023 meeting

CY 2022 Cordillera Fruits Situationer

CY 2022 Cordillera Vegetables Situationer

8 Livestock production improves in Q2 2023

PSA-CAR Conducts Outreach and IEC on Civil Registry at Barangay Alno

CAR QuickStat

CAR places 5th in Best RSC Awards 2023



The Philippine Statistics Authority (PSA) conducted the 8th Regional Statistics Committee (RSC) Summit last 05 October 2023 at the Century Park Hotel, Malate, Manila. The summit is held annually in recognition of RSC's vital role as the policymaking body on statistical matters at the regional level.

The said activity adopted the theme "Accelerating Progress: Promoting Data and Statistics for Healthy Philippines, Empowering Communities through Local-level Data and Statistics" provided a forum for the exchange of regional best practices, innovations, and accomplishments in the development of local-level statistics. It functioned as a forum for discussion of emerging issues and concerns at the subnational level.

The other highlight of the summit was the RSC Awards for 2023 that recognized the Top Five (5) Best RSCs for their outstanding work from the third quarter of 2022 to the second quarter of 2023. Having accumulated the highest overall score across all regions, RSC IV-A garnered the top spot. RSC II took the second place while RSC VIII earned third place, RSC CARAGA got the fourth place, and RSC CAR bagged the fifth place. Meanwhile, RSC BARMM got the Breakthrough RSC Award for 2023, a special recognition for being the most improved RSC.

PSA Board Members, PSA Officials (Execom/Directorate, SOCD chiefs of PSA regional offices, and Central Office division chiefs), RSC chairs, representatives from the Metropolitan Manila Development Authority (MMDA), Bangsamoro Planning and Development Authority (BPDA), and RSC Summit Secretariat and Support Staff attended the 8th RSC Summit.

GANGSA



A **gangsa** (gong) is an indigenous musical instrument of the Igorots ("people of the mountain") of the Cordillera region. It is usually played during cultural celebrations, rituals and festivities. It is a cultural symbol of fellowship and unity among the Igorots.

The quarterly newsletter is prepared by the Statistical Operations and Coordination Division (SOCD) of PSA- RSSO CAR

Editor-in-Chief

Aldrin Federico R. Bahit, Jr., CSS

Assistant Editor-in-Chief

Rick Jason P. Aquino, IO I

Staff/Contributors

Warren B. Mamanteo, SupSS

Ma. Gina V. De Guzman, SrSS

Betina Joy V. Bermillo, SrSS

Cherry K. Dionisio, SS II

Brozybroz Y. Mateo, SS II

Kay Angelika M. Castro, SS II

Jezl R. Boado, SS II

Rick Jason P. Aquino, IO I

Oswaldo P. Cofolan, SA

Nico L. Pagaduan, AS

Lorie Ann M. Bucagan, AS

Aeron Joe C. Bahug, COSW

Jansenn Rexus F. Banaña, COSW

Noemi M. Pal-og, COSW

Layout Artist

Reymarson P. Miclat, ISA I

Rick Jason P. Aquino, IO I

Adviser

Villafe P. Alibuyog
Regional Director

3F CTLL Bldg. 141 Abanao Extension,
Rizal Monument, Baguio City 2600

(074) 442-7449

rssocar@psa.gov.ph
rssocarcasd@psa.gov.ph
rssocarsocd@psa.gov.ph

rssocar.psa.gov.ph
@psarssocar
@psarssocar

DISCLAIMER: Some photos/graphics used in this publication were downloaded from the internet. This publication does not take ownership of the said photos/graphics.

Grand Caravan and Exhibits in celebration of PSA's 10th Anniversary



The Philippine Statistics Authority - Cordillera Administrative Region (PSA-CAR), in partnership with SM City Baguio, conducted a Grand Caravan and Exhibit in celebration of the 10th Anniversary of the PSA with the theme "PSA@10: Providing quality services through digital services" last 18 September 2023 at the 2nd Floor Sunset Terrace of SM City Baguio. This was attended by different regional line agencies and staff from PSA-CAR and PSA-Benguet.

The said activity features a PhilSys registration area and an exhibit comprising a display of activity photos comprised of infographics on statistical data, PSA products and services, and accomplishments of the PSA-CAR regional office and the six provincial offices. The national ID registration services and exhibit display will be available to the public from 18-20 September 2023.



Regional Director Villafe P. Alibuyog (PSA-CAR), OIC Chief Administrative Officer Gerard A. Tolito (PSA-CAR), Chief Statistical Specialist Aldrin Federico R. Bahit, Jr. (PSA-CAR), Chief Statistical Specialist Imelda L. Buyuccan (PSA-Benguet), Assistant Mall Manager Lani Luz M. Delovino (SM City Baguio), and Assistant Branch Manager Geoffrey A. Geronimo (SM City Baguio) took part during the ribbon-cutting ceremony.

PSA-CAR launches its Data Enclave Center



The Philippine Statistics Authority - Cordillera Administrative Region (PSA-CAR), along with other PSA regional offices in the country, simultaneously launched their Data Enclave Centers (DECs) last 14 July 2023.

The said activity was conducted via face-to-face and Zoom video conferencing, hosted by PSA-MIMAROPA. The DEC launching of PSA-CAR was participated by regional line agencies and academe in the region. The data enclave facility aims to bring PSA's products and services closer to its partners, stakeholders, and data users.

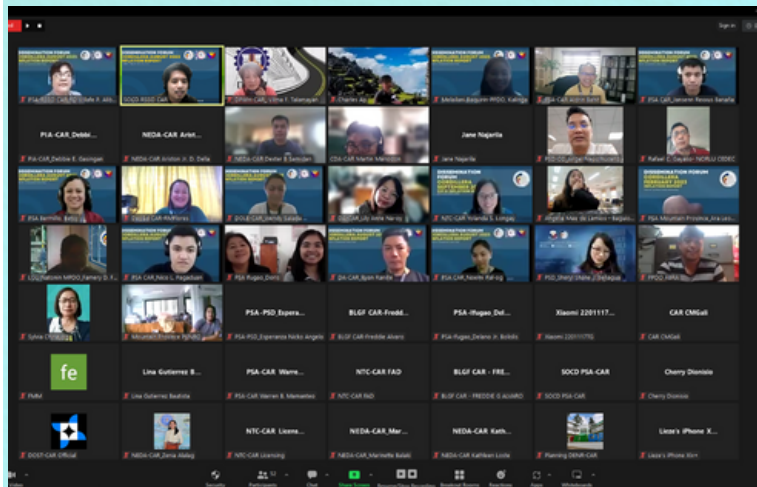
The Data Enclave is a facility through which confidential data, such as identifiable information from census and firm-level data can be stored and disseminated. The said facility can only be accessed in the Regional Statistical Services Offices (RSSOs) of PSA.



PSA-CAR's DEC launching was followed by the data appreciation on selected establishment-based surveys in the afternoon in relevance to the data that the facility has to offer. Senior Statistical Specialist Betina Joy V. Bermillo of PSA-CAR presented the overview and updates of the Annual Survey of Philippine Business and Industry. PSA-CAR's Assistant Statistician Lorie Ann M. Bucagan presented the 2020 Overseas Wages Survey (OWS) and 2019-2020 Integrated Survey on Labor and Employment (ISLE).

The PSA recognizes the continuing challenge in responding to the demands of its clients and stakeholders, and in disseminating various data being produced by the agency.

Online Dissemination of the August 2023 Inflation Rate and CPI of CAR



The Philippine Statistics Authority-Cordillera Administrative Region (PSA-CAR) conducted the Online Dissemination of the July 2023 Cordillera Inflation Rate (IR) and Consumer Price Index (CPI) last 22 September 2023 via Zoom. This was participated by Regional Line Agencies (RLAs), Local Government Units (LGUs), academe, and the media.

PSA-CAR Regional Director Villafe P. Alibuyog reported that the inflation rate in CAR increased to 3.9 percent due to higher prices in Food and Non-Alcoholic Beverages with a percent share of 82.2; Transport with 6.7 percent share; and Restaurants and Accommodation Services with 4.0 percent share.



Higher inflation rates were observed in Food and Non-Alcoholic Beverages with 8.9 percent, Education Services with 0.9 percent, Restaurants and Accommodation Services with 6.5 percent, and Transport with a lower negative inflation at -0.2 percent.

Department of Political and Social Sciences Professor Mary Jane Olaes-Najarila of Saint Louis University emphasized the importance of the Consumer Price Index (CPI) and inflation rate. During her presentation, she discussed the common reasons for inflation and how it affects the decision-making of people at the local level.

PSA-CAR conducts 2022 NDHS Regional Dissemination Forum



The Philippine Statistics Authority - Cordillera Administrative Region (PSA-CAR) conducted the 2022 National Demographic and Health Survey (NDHS) Regional Data Dissemination Forum of the Final Results last 29 June 2023 at Lafaayette Suites, Baguio City. The said forum was also relayed through Zoom online conference.

Regional and Provincial staff of PSA-CAR presented data on fertility and family planning, maternal health and childcare, childhood mortality, HIV knowledge, attitudes, and behaviors, health utilization and financing, and women's empowerment and domestic violence.



Policies and program implications were discussed by invited guest speakers from different agencies/offices namely: Commission on Population and Development (CPD) - CAR Acting Director Cecil A. Basawil, Department of Health (DOH) - CAR Medical Officer III Anachris M. Kilakil, Peoples Organization for Social Transformation (POST), Inc. Executive Director Ferdinand P. Gonzales, and Police Regional Office-Cordillera (PROCOR) Police Major Marcy Grace U. Marron.

DepEd-CAR wins 3rd PSA Quiz Bee Regional Finals



The Philippine Statistics Authority - Cordillera Administrative Region (PSA-CAR) conducted the 3rd PSA Quiz Bee at the PSA-CAR 3rd Floor Conference Room, CTLL Building, 141 Abanao Extension, Baguio City last September 15, 2023.

Eleven (11) representatives from different agencies comprising the Regional Statistics Committee-Cordillera Administrative Region (RSC-CAR) competed in the said event (excluding PSA employees and relatives within the fourth degree of affinity and consanguinity).

The Quiz Bee consisted of three rounds: easy, average, and difficult, equivalent to one point, two points, and three points for each correct answer, respectively. Each round consisted of ten questions.

Accumulating the final scores of 49 points, 35 points, and 34 points, Department of Education, Benguet State University, and Department of Labor and Employment bagged the Champion title, 2nd, and 3rd places, respectively. The names of the winners were as follows:



Champion: Rose Melody M. Flores (person in the middle)
Department of Education - CAR

2nd Place: Almarie W. Sukil-ap (person on the left)
Benguet State University

3rd Place: Earl Jhoen M. Decuzar (person on the right)
Department of Labor and Employment - CAR

Ms. Rose Melody M. Flores will be the representative of CAR competing for the upcoming 3rd National PSA Quiz Bee on 05 October 2023 at Century Park Hotel, Manila.

PSA-CAR conducts Press Launch on the 2022 Census of Agriculture and Fisheries



The Philippine Statistics Authority - Cordillera Administrative Region (PSA-CAR) conducted the 2022 Census of Agriculture and Fisheries (CAF) Press Launch last 04 September 2023 at Fortune Hongkong Seafood Restaurant, Otek Street, Baguio City.

PSA-CAR Supervising Statistical Specialist Warren B. Mamanteo presented and discussed the overview of the 2022 CAF. The CAF is a large-scale government undertaking geared towards the collection and compilation of basic information on the agricultural and fishery sectors in the Philippines. The objectives of CAF are to determine the structural characteristics of agriculture and fishery sectors in the country; provide sampling frames for the conduct of periodic agricultural and fishery surveys; provide basic data on the agriculture, aquaculture, and fishing characteristics for use in the government's national and local development planning; and provide data on the agricultural, aquaculture, and fishery facilities and services available in the barangay.

PSA-CAR Chief Statistical Specialist Aldrin Federico R. Bahit, Jr. presented the methodology of the 2022 CAF, data privacy, and the preliminary indicators to be released for the census. The 2022 CAF data collection for households and barangays will start on September 04, 2023, until October 25, 2023. The data collection for non-household or establishments engaged in agriculture and fisheries were enumerated from May 02, 2023 to July 31, 2023.



3rd Quarter IACCRVS Meeting



The Philippine Statistics Authority - Cordillera Administrative Region (PSA-CAR) conducted the 3rd Quarter Inter Agency on Civil Registry and Vital Statistics (IACCRVS) Meeting at Lafaayette Luxury Suites, Baguio City last 19 September 2023

Department of Health - Center for Health and Development (DOH-CHD) - CAR Nurse II Liane Tuban presented updates on the COVID-19, chikungunya, and dengue cases in CAR. In her discussion, there were 7 reported deaths due to dengue in CAR where 3 were reported in Apayao, 2 in Benguet, 1 in Baguio City, and 1 in Kalinga.

PSA-CAR OIC Chief Administrative Officer Gerard A. Tolito discussed the family code of the Philippines where the use of surname by an illegitimate child was highlighted. He also presented an overview of the Civil Registry System - Information Technology Project 2 (CRS-ITP 2). He reported that the waiting time for documents such as the marriage, birth, and death certificate was reduced from two hours to one hour and the certificate of no marriage from four working days to one working day.



The certificate of no death or CENODEATH was also introduced. It was discussed that the document is important for second marriages.

Administrative Officer V Mayette B. Iniguid of the Department of Foreign Affairs (DFA) - Consular Office presented updates on consular offices, acceptable ID's, assistance to nationals (ATN cases), issues encountered (double/multiple birth/marriage records; supplemental report, correction of entries, delayed registered records, and verification of records in cases with assumed identities)



Republic of the Philippines
REGIONAL STATISTICS COMMITTEE
Cordillera Administrative Region.

RSC-CAR Adopts 3 Resolutions in Q3 2023 meeting



The Philippine Statistics Authority - Cordillera Administrative Region (PSA-CAR) conducted the 3rd Quarter Regional Statistics Committee (RSC) - CAR at Fortune Hongkong Seafood Restaurant last 31 August 2023.

The said meeting had 2 matters for approval and 12 matters for information. The following resolutions were discussed and approved:

RSC-CAR Resolution No. 10 Series of 2023

Approving and Adopting the 34th National Statistics Month (NSM) Calendar of Activities of the Cordillera Administrative Region (CAR) for October 2023

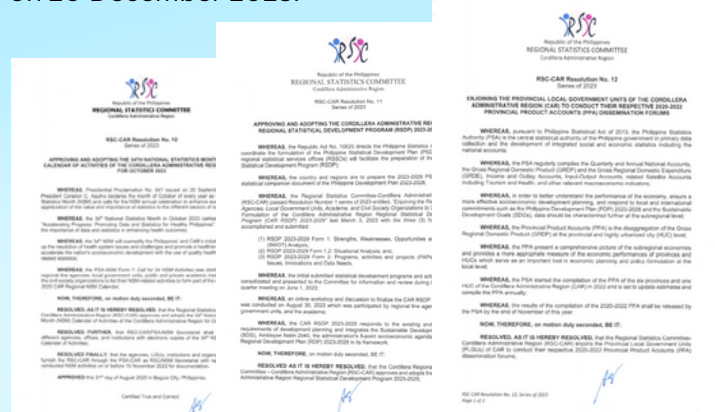
RSC-CAR Resolution No. 11 Series of 2023

Approving and Adopting the Cordillera Administrative Region (CAR) Regional Statistical Development Program (RSDP) 2023-2029

RSC-CAR Resolution No. 12 Series of 2023

Enjoining the Provincial Local Government Units of the Cordillera Administrative Region (CAR) to Conduct their Respective 2020-2022 Provincial Product Accounts (PPSA) Dissemination Forums

The fourth quarter 2023 RSC-CAR meeting is scheduled on 20 December 2023.



CY 2022 CORDILLERA FRUITS SITUATIONER

TABLE 1. Major and Priority Fruits Production in CAR by Province: 2021-2022

Region/Province	PRODUCTION (MT)		% Change
	2021	2022	
CAR	27,576.5	28,645.5	3.9
Major	24,982.7	26,085.2	4.4
Priority	2,593.8	2,560.3	(1.3)
ABRA	7,974.1	7,960.4	(0.2)
Major	7,032.1	7,035.0	0.0
Priority	942.0	925.5	(1.8)
APAYAO	7,839.5	7,822.6	(0.2)
Major	7,655.8	7,667.9	0.2
Priority	183.6	154.7	(15.8)
BENGUET	3,314.0	3,542.7	6.9
Major	2,438.8	2,678.9	9.8
Priority	875.3	863.8	(1.3)
IFUGAO	4,580.3	5,147.0	12.4
Major	4,311.5	4,866.8	12.9
Priority	268.8	280.2	4.2
KALINGA	1,796.6	2,106.4	17.2
Major	1,731.6	2,030.1	17.2
Priority	64.9	76.3	17.5
MOUNTAIN PROVINCE	2,072.0	2,066.4	(0.3)
Major	1,812.9	1,806.6	(0.3)
Priority	259.1	259.8	0.3

Source: Philippine Statistics Authority

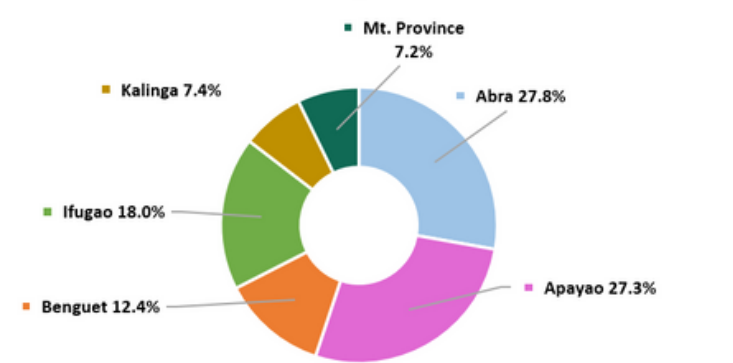
The fruits production of the Cordillera Administrative Region (CAR) increased by 3.9% from 27,576.5 MT in 2021 to 28,645.5 MT in 2022. Benguet, Ifugao, and Kalinga registered increases while Abra, Apayao, and Mt. Province posted decreases in production (Table 1).

A total of 28,645.5 MT (91.1%) of the overall regional fruits production in 2022 came from major fruits, while 2,560.3 MT (8.9%) came from priority fruits.

Abra was the top producer, accounting for 27.8% of the total regional fruits production with 7,960.4 MT. Apayao came second with 27.3% share, followed by Ifugao with 18.0%, Benguet with 12.4%, and Kalinga with 7.4% shares, respectively (Figure 1).

With an output of 2,066.4 MT, Mountain Province produced the smallest output of the region's total fruits production, accounting for 7.2% of total fruits production (Table 2).

FIGURE 1: Percentage Distribution of Total Fruits Production in CAR by Province: 2022



Source: Philippine Statistics Authority

CY 2022 CORDILLERA VEGETABLES SITUATIONER

TABLE 1. Major and Priority Vegetables Production in CAR by Province: 2021-2022

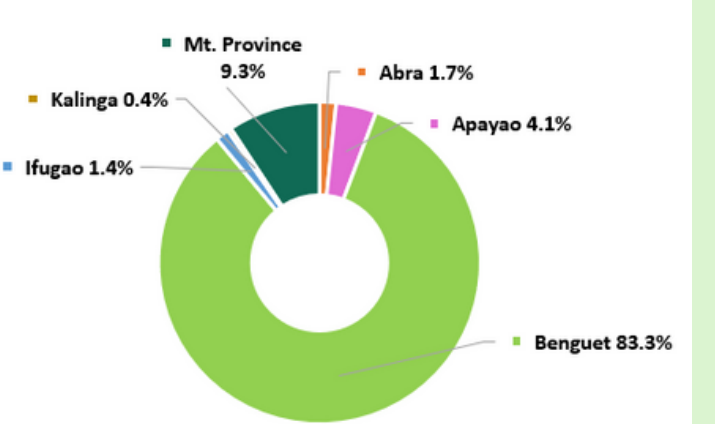
Region/Province	PRODUCTION (MT)		% Change
	2021	2022	
CAR	351,031.0	348,612.8	(0.7)
Major	205,108.0	205,462.8	0.2
Priority	145,923.0	143,150.0	(1.9)
ABRA	5,767.2	5,775.8	0.1
Major	2,136.8	2,129.0	(0.4)
Priority	3,630.4	3,646.8	0.5
APAYAO	13,878.3	14,181.7	2.2
Major	12,500.3	12,774.5	2.2
Priority	1,378.1	1,407.2	2.1
BENGUET	292,535.1	290,285.0	(0.8)
Major	162,931.7	163,734.5	0.5
Priority	129,603.4	126,550.5	(2.4)
IFUGAO	5,210.0	4,734.6	(9.1)
Major	2,263.3	1,830.2	(19.1)
Priority	2,946.7	2,904.4	(1.4)
KALINGA	1,174.6	1,319.4	12.3
Major	444.8	487.5	9.6
Priority	729.8	832.0	14.0
MOUNTAIN PROVINCE	32,465.8	32,316.3	(0.5)
Major	24,831.2	24,507.2	(1.3)
Priority	7,634.6	7,809.1	2.3

Source: Philippine Statistics Authority

The vegetables production of the Cordillera Administrative Region (CAR) slightly decreased by 0.7% from 351,031.0 MT in 2021 to 348,612.8 MT in 2022. Benguet, Ifugao, and Mt. Province registered decreases while Abra, Apayao, and Kalinga posted increases in production.

A total of 205,462.8 MT (58.9%) of the overall regional production of 348,612.8 MT in 2022 came from major vegetables, while 143,150.0 MT (41.1%) came from priority vegetables.

FIGURE 1: Percentage Distribution of Total Vegetables Production in CAR by Province: 2022



Source: Philippine Statistics Authority

Benguet was the top producer, accounting for 83.3% of the total regional vegetables production with 290,285.0 MT. With a wide margin, Mt. Province came second with 9.3% share, followed by Apayao with 4.1%, Abra with 1.7%, and Ifugao with 1.4% shares, respectively.

Livestock production improves in Q2 2023

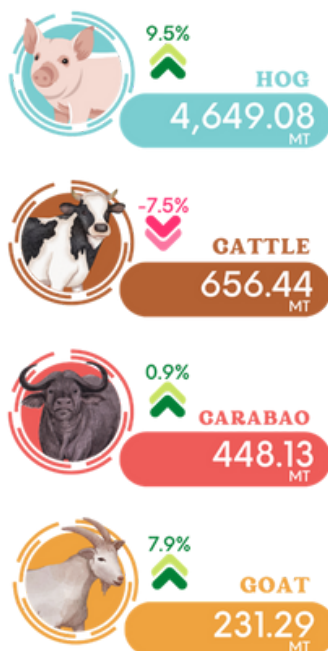
The total volume of livestock production in the Cordillera Administrative Region (CAR) in the second quarter of 2023 was estimated at 5,985 metric tons. This was composed of 4,649 metric tons of hog, 656 metric tons of cattle, 448 metric tons of carabao, and 231.29 metric tons of goat.

The second quarter 2023 total volume of livestock production in the region increased by 6.6 percent compared to the production of the same quarter of the previous year. However, quarter-on-quarter comparison shows

that the production of livestock commodities in CAR declined by 18.1 percent from 7,310 metric tons in the first quarter to 5,985 metric tons in the second.

In terms of share to the total volume of livestock production in CAR, hog production comprised more than three-fourths of the region's total livestock output in the second quarter. Meanwhile, the production of cattle had 11.0 percent share while carabao and goat accounted for 7.5 and 3.9 percent of the total CAR livestock production, respectively.

Figure 1. Volume of Livestock Production and Growth Rates by Animal Type, CAR: Second Quarter 2023



Source: Livestock and Poultry Surveys, Philippine Statistics Authority

Figure 2. Total Volume of Livestock Production (in thousand Metric Tons), CAR: 2020-2023

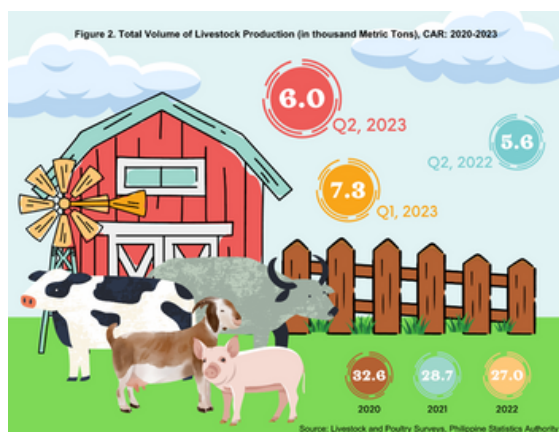


Figure 2 shows the total volume of livestock production of CAR across years, highlighting the first and second quarters of 2023 as well as the second quarter of 2022. The region produced about 400 metric tons more during the second quarter of 2023 compared to the total livestock commodities produced during the same quarter of the previous year. However, the livestock production of the region in the second quarter of 2023 was 1.3 thousand metric tons lower than the previous quarter's recorded output.

PSA-CAR Conducts Outreach and IEC on Civil Registry at Barangay Alno



The Philippine Statistics Authority - Cordillera Administrative Region recently conducted an outreach activity and Information, Education, and Communication (IEC) on civil registry on 21 July 2023 Barangay Alno, La Trinidad, Benguet in celebration of the 45th National Disability and Prevention Week. The participants of the said activity were senior citizens and persons with disability (PWDs).

Registration Officer I Emmalyn E. Equinio presented an overview of the PSA frontline services where she discussed the types of documents and its basic requirements, modes of application, issuance, and payment problems. She also presented issues encountered in civil registry documents and remedies to address such concern.

Birth Registration Agent Ritchie Mae Chupisna briefly discussed the Philippine Identification System (PhilSys) Birth Registration Assistance Project (PBRAP) and cited common issues with late registrants and those who have not yet registered with PSA.

Regional Registration Center Supervisor Angel F. Marquez presented an overview of the PhilSys where she discussed the security features of the PhilID or national ID, the PhilSys API-enabled authentication services, mechanics of the PhilSys authentication, and PhilSys process.



CORDILLERA QUICKSTAT

INDICATOR REFERENCE PERIOD and DATA			
TOTAL POPULATION ('000) ^{1/}	2010	2015	2020
Philippines	92,338	100,981	109,035
Cordillera Administrative Region	1,617	1,722	1,798
Abra	235	241	251
Apayao	113	119	124
Baguio City	319	345	366
Benguet*	404	446	461
Ifugao	191	203	207
Kalinga	202	213	230
Mt Province	154	155	158
ANNUAL GROWTH RATE (%) ^{2/}	2010-2015	2015-2020	2010-2020
Philippines	1.72	1.63	1.67
Cordillera Administrative Region	1.21	0.91	1.06
Abra	0.52	0.84	0.67
Apayao	1.08	0.90	0.99
Baguio City	1.54	1.25	1.40
Benguet**	1.91	0.67	1.32
Ifugao	1.14	0.48	0.83
Kalinga	1.02	1.62	1.31
Mt Province	0.05	0.49	0.26
PROJECTED MID-YEAR POPULATION ('000) ^{3/}	2023	2024	2025
Philippines	112,892	114,163	115,377
Cordillera Administrative Region	1,850	1,862	1,874
Abra	250	251	252
Apayao	126	126	127
Benguet*	876	884	892
Ifugao	214	215	216
Kalinga	224	225	226
Mt Province	158	158	158
MAGNITUDE OF POOR FAMILIES	2015	2018	2021
Cordillera Administrative Region	67,640	36,350	30,740
Abra	12,210	8,190	9,190
Apayao	8,430	4,270	1,300
Benguet*	4,710	7,650	7,930
Baguio City	..	1,440	1,080
Ifugao	14,660	4,460	2,830
Kalinga	14,590	4,030	2,560
Mt Province	12,830	6,310	5,850

INDICATOR REFERENCE PERIOD and DATA			
MAGNITUDE OF POOR INDIVIDUALS	2015	2018	2021
Cordillera Administrative Region	390,230	213,830	180,710
Abra	74,200	45,650	53,520
Apayao	43,100	24,040	8,470
Benguet*	28,500	41,090	41,990
Baguio City	..	8,240	6,220
Ifugao	85,920	30,130	17,110
Kalinga	88,440	26,310	18,450
Mt Province	70,080	38,370	34,960
VITAL STATISTICS ^{4/}	Q1 2022	Q4 2022	Q1 2023
REGISTERED BIRTH			
Cordillera Administrative Region	8,517	9,644	9,984
Abra	1,057	1,233	1,226
Apayao	929	1,100	1,379
Baguio City	1,379	2,114	1,596
Benguet	1,644	1,227	1,998
Ifugao	1,089	1,218	1,035
Kalinga	1,411	1,662	1,626
Mt Province	1,008	1,110	1,124
REGISTERED MARRIAGE			
Cordillera Administrative Region	2,889	1,999	2,900
Abra	513	184	497
Apayao	198	106	201
Baguio City	477	513	580
Benguet	842	550	771
Ifugao	348	207	335
Kalinga	308	265	287
Mt Province	203	174	229
REGISTERED DEATHS			
Cordillera Administrative Region	2,868	2,449	2,897
Abra	462	383	426
Apayao	233	223	265
Baguio City	661	690	530
Benguet	690	481	842
Ifugao	230	189	263
Kalinga	312	256	309
Mt Province	280	227	262

INDICATOR REFERENCE PERIOD and DATA			
CONSUMER PRICE INDEX ALL ITEMS, (2018=100) ^{5/}	AUG 2022	JUL 2023	AUG 2023
Philippines	116.3	121.2	122.5
Cordillera Administrative Region	116.0	119.0	120.5
Abra	117.0	117.5	119.9
Apayao	117.0	121.2	122.4
Benguet**	116.2	119.6	121.3
Baguio City	113.1	116.2	117.2
Ifugao	117.3	121.4	124.1
Kalinga	119.4	121.6	123.6
Mt Province	121.4	124.2	124.8
INFLATION RATE (%), ALL ITEMS ^{6/}	JUL 2022	JUN 2023	JUL 2023
Philippines	6.3	4.7	5.3
Cordillera Administrative Region	6.5	2.9	3.9
Abra	7.5	2.9	2.5
Apayao	7.9	4.3	4.6
Benguet**	7.9	3.3	4.4
Baguio City	4.7	2.4	3.6
Ifugao	5.1	3.9	5.8
Kalinga	7.1	2.0	3.5
Mt Province	8.9	3.6	2.8
PURCHASING POWER of the PESO ^{7/}	JUL 2022	JUN 2023	JUL 2023
Philippines	0.86	0.83	0.82
Cordillera Administrative Region	0.86	0.84	0.83
Abra	0.85	0.85	0.83
Apayao	0.85	0.83	0.82
Benguet**	0.86	0.84	0.82
Baguio City	0.88	0.86	0.85
Ifugao	0.85	0.82	0.81
Kalinga	0.84	0.82	0.81
Mt Province	0.82	0.81	0.80
LITERACY ^{8/}	2008	2013	2019
Philippines			
Basic Literacy Rate	95.6	96.5	93.8
Functional Literacy Rate	86.4	90.3	91.6
Cordillera Administrative Region			
Basic Literacy Rate	94.8	94.9	94.0
Functional Literacy Rate	89.2	91.2	92.0

INDICATOR REFERENCE PERIOD and DATA			
LABOR and EMPLOYMENT ^{9/}	JUL 2022	APR 2023 ^{9/}	JUL 2023 ^{9/}
Philippines			
Working Age Population ('000)	76,639	77,260	78,051
Labor Force Participation Rate (%)	65.2	65.1	60.1
Employment Rate (%)	94.8	95.5	95.2
Unemployment Rate (%)	5.2	4.5	4.8
Cordillera Administrative Region			
Working Age Population ('000)	1,271	1,275	1,288
Labor Force Participation Rate (%)	68.8	65.4	64.2
Employment Rate (%)	95.8	97.3	95.9
Unemployment Rate (%)	4.2	2.7	4.1
AGRICULTURAL STATISTICS: CROPS PRODUCTION in CAR (MT) ^{10/}	Q2 2022	Q1 2023	Q2 2023 ^{10/}
Palay	109,106	28,684	112,795
Corn	40,497	41,890	44,923
Cabbage	19,290	20,181	18,502
Pechay	3,926	11,096	4,429
Broccoli	535	1,643	330
Potato	13,186	15,059	13,643
Carrots	8,094	11,206	8,226
Coconut (w/husk)	371	267	358
FISHERY PRODUCTION in CAR (MT) ^{11/}	Q2 2022	Q1 2023	Q2 2023 ^{11/}
Inland Municipal Fisheries	104	149	121
Aquaculture	848	729	947

INDICATOR REFERENCE PERIOD and DATA			
LIVESTOCK and POULTRY PRODUCTION in CAR (MT) ^{12/}	Q2 2022	Q1 2023	Q2 2023 ^{12/}
Carabao	444	804	448
Cattle	710	685	656
Goat	214	154	231
Hog	4,245	5,667	4,649
Chicken	1,547	1,506	1,894
Duck	145	173	177
Chicken eggs	1,387	1,306	1,443

INDICATOR REFERENCE PERIOD and DATA			
AVERAGE FARM PRICES (PHP/Kg) ^{13/}	AUG 2022	JUL 2023	AUG 2023
Palay [Paddy] Other Variety, dry	19.45	18.90	19.84
Corngrain [Maize] Yellow, matured	19.02	19.08	17.29
Cabbage	10.42	44.16	..
Chinese Cabbage	5.59	22.45	..
Broccoli	37.70	56.63	..
White Potato	29.65	57.96	..
Carrots	51.00	59.54	..
Coconut, matured	7.81	9.58	..
Strawberry	228.54	175.59	..
Chayote	6.77	14.64	..
Carabao for Slaughter (backyard)	180.00	180.00	..
Cattle for Slaughter (backyard)	164.58	140.34	..
Goat for Slaughter (backyard)	240.80	225.39	..
Hogs for Slaughter (backyard)	182.38	211.40	..
Native Chicken (backyard)	205.20	216.87	..

INDICATOR REFERENCE PERIOD and DATA			
RICE HOUSEHOLD STOCKS (MT) ^{14/}	JUN 2022	MAY 2023 ^{14/}	JUN 2023 ^{14/}
Cordillera Administrative Region	36,783.09	41,990.98	34,155.24
Abra	10,814.97	17,488.98	10,181.12
Apayao	5,428.92	4,949.32	4,543.86
Benguet*	7,513.91	8,275.65	7,393.59
Ifugao	2,813.40	4,345.37	2,919.85
Kalinga	6,332.83	4,550.03	6,290.89
Mt. Province	3,879.05	2,381.63	2,825.94

Legend:

1/ - Source: 2000, 2010 and 2015 Census of Population and Housing
 2/ - Based on Population Growth Rate: 2000-2015, 2000-2010 & 2010-2015
 3/ - Source: 2015 Census-Based National, Regional and Provincial Population Projections
 4/ - Based on PSA Poverty Official Statistics
 5/ - Based on PSA Vital Statistics Report, 2020 preliminary data
 6/ - Based on Monthly CPI Result
 7/ - Source: Functional Literacy, Education, and Mass Media Survey
 8/ - Source: Labor Force Survey
 9/ - Source: Crop Production Surveys
 10/ - Source: Fishery Surveys
 11/ - Source: Livestock and Poultry Production Survey
 12/ - Source: Farm Prices Survey
 13/ - Palay and Corn Stocks Survey
 * - Benguet including Baguio City
 ** - Benguet excluding Baguio City
 *** - Revised based on the CPI (2012) and adoption of the 2015 PopCen result
 .. - no data available
 P - preliminary data
 r - revised

For Inquiries:

Philippine Statistics Authority Regional Statistical Services Office
 Cordillera Administrative Region
 CTR 888g, 141 Abasco Extension, Rizal Monument Area
 2400 Baguio City, Philippines

Tel. No. (076) 422-7449
 Telefax No. (076) 422-7449
 E-mail address: rsoac@psa.gov.ph
 URL: www.rsoac.psa.gov.ph