

## TWG up for CAR environment statistics database

The Regional Statistics Committee (RSC) – Cordillera Administrative Region (CAR) during its 2nd Quarter Meeting held on February 19, 2019 at the RDC Hall NEDA-CAR organized the Regional Technical Working Group (TWG) on Environment Statistics through RSC-CAR Resolution no. 02, series of 2019.

The TWG is spearheaded by the Regional Director of the Department of Environment and Natural Resources (DENR) as the Chairperson and the Regional Director of the Philippine Statistics Authority (PSA) as Co-Chair.



The members include the Environmental Management Bureau (EMB), Mines and



Geosciences Bureau (MGB), Watershed, and the Water Resources Research Development and Extension Center (WWRDEC), Department of Agriculture (DA), Bureau of Fisheries and Aquatic Resources (BFAR), Department of Health (DOH), Department of Science and Technology - Philippine Atmospheric, Geophysical and Astronomical Services Administration (DOST-PAGASA), Department of Transportation - Land Transportation Office (DOT-LTO), Office of the Civil Defense (OCD),  
... continued on page 4



Participants of this year's Civil Registration Month Poster Making Contest from the Benguet Schools Division together with PSA-CAR Chief Administrative Officer Adrian V. Cerezo and coaches display their winning pieces interpreting the theme: "Inclusive and responsive CRVS: Working Smarter through Innovation" at the Adivay Hall DepEd Benguet Building.

## Baguio City and Benguet students reap awards in Civil Registration Month contests

In its continuing bid to promote the importance of civil registration and vital statistics (CRVS), encourage every citizen to register vital events, educate and enhance awareness and appreciation of the legal, administrative and statistical values of civil registry documents especially among the youth, the Philippine Statistics Authority – Regional Statistical Services Office Cordillera Administrative Region (PSA-RSSO CAR) held On-the-Spot Poster Making and Essay Writing Contests for the Junior and Senior High School students last February 26 and March 5, 2019 in Baguio City and Benguet. The events were conducted in partnership with the Department of Education (DepEd) – CAR.

For the Benguet Schools Division, Belmar P. Sebiano of Tublay Schools of Home Industries-Main won First Place in the Poster Making Contest, while the Sablan National High School represented by Israel B. Balian and the Benguet National High School represented by Myla D. Arca got the Second and Third Places, respectively.

Meanwhile, Nestor V. Politic, Jr. of the Cordillera Regional Science High School topped the Essay Writing contest. Sablan National High School represented by Juleanne Marie M. Awas, and Alejo M. Pacalso Memorial National High School represented by Hannah Lyn P. Yamoto ranked Second and Third, respectively.

For the Baguio Schools Division, Lance Dyke C. Barril representing Guisad Valley National High School won First Place in the Poster Making, followed by Ric Ryden S. Rolle (Second Place) and Angel V. Tamondong (Third Place) both from the Baguio City National High School.

Meanwhile, Czember Lean Adchang of the Guisad Valley National High School garnered the first spot on the Essay Writing  
... continued on page 4



Lance Dyke C. Barril of Guisad Valley National High School (center) garnered First Place in the Poster Making. The Second and Third Places were awarded to Ric Ryden S. Rolle (left) and Angel V. Tamondong (third from left) both from the Baguio City National High School.



"A gangsa (gong) is an indigenous musical instrument of the Igorots ("people of the mountain") of the Cordillera region. It is usually played during cultural celebrations, rituals and festivities. It is a cultural symbol of fellowship and unity among the Igorots."

## Cordillera farmers produce 374 MT of crops

The country's total production output of various crops such as broccoli, cabbage, carrots, habitchuelas, Chinese pechay, and white potato registered at 373,843.8 metric tons in 2017. Production was slightly lower by 0.25% compared to the 372,906.7 metric tons output in 2016.

Broccoli production in the country increased by 10.0% in 2017 with CAR contributing the biggest increase, followed by Northern Mindanao, Central Visayas, Cagayan Valley and Davao Region. The Cordillera region was the consistent top producer of broccoli in the country. Broccoli production of the region comprised 65.8% of the country's total production in 2017, followed by Northern Mindanao with 27.8%, Central Visayas, Cagayan Valley and Davao Region.



Meanwhile, cabbage production slightly declined by 0.5% in 2017. CAR recorded the biggest decline in production followed by SOCCSKSARGEN, CALABARZON and Eastern Visayas with 4.8% and Cagayan Valley with 0.7%; while other regions contributed 1.0%. Cordillera region remained the major producer of cabbage in the country contributing 76.9% to the national output. Central Visayas, Northern Mindanao and Davao Region shared a combined output of 15.9%; while the rest of the regions contributed 7.3%.

Volume of carrot production decreased by 1.2% with lesser production in the Cordillera region, CALABARZON, Eastern Visayas and Bicol Region. The Cordillera remained the biggest producer of carrots in the country contributing 89.4% to total production in 2017. Central Visayas distantly followed with 4.2%. Davao and Northern Mindanao had a combined share of 3.9%.



Habitchuelas production went down by 1.7% in 2017. The decline in production were recorded by Cordillera, Cagayan Valley, Eastern Visayas, Zamboanga Peninsula and Caraga. CAR was the top producer of habitchuelas contributing 50.7% to the total national output.

Other producers of habitchuelas were Cagayan Valley with 16.5% share, Central Visayas and Bicol Region shared 10.5% and 5.5%, respectively.



The country's Chinese pechay production slightly decreased by 0.95% in 2017. This was mainly due to the decrease in production from the country's top producer, the Cordillera region. About 86.3% of the country's total Chinese pechay production came from CAR. Central Visayas came next with 7.0% share. Northern Mindanao, Davao Region and the rest of the country had a combined share of 6.7%.



White potato production in the country was recorded at 117,637.3 MT, slightly higher by 0.7% as compared to the 116,783.5 MT national output in 2016. The bulk of the country's white potato production accounting 85.4% of the national output came from CAR. This was distantly followed by Davao region with 8.5% share. Northern Mindanao shared 5.1%, SOCCSKSARGEN with 0.6% while the rest of the regions shared 0.4%.

### In this Issue...

*Baguio City and Benguet students reap awards in Civil Registration Month contests* **1**

*TWG up for CAR environment statistics database* **1**

*Cordillera farmers produce 374 MT of crops* **2**

*95% of pregnant women in CAR received antenatal care from skilled providers* **3**

*243 buildings constructed in CAR for the 3rd Quarter of 2018* **3**

*CAR exports \$68.5 M worth of goods* **4**

*Rice stocks down by 7%, corn up by 8%* **5**

*Cordillera cuts imports by 19%* **6**

*Workers in establishments up by 3.9%* **7**

REPUBLIC OF THE PHILIPPINES  
PHILIPPINE STATISTICS AUTHORITY  
CORDILLERA ADMINISTRATIVE REGION

**2018 Report on the ECONOMIC PERFORMANCE**  
Cordillera Administrative Region

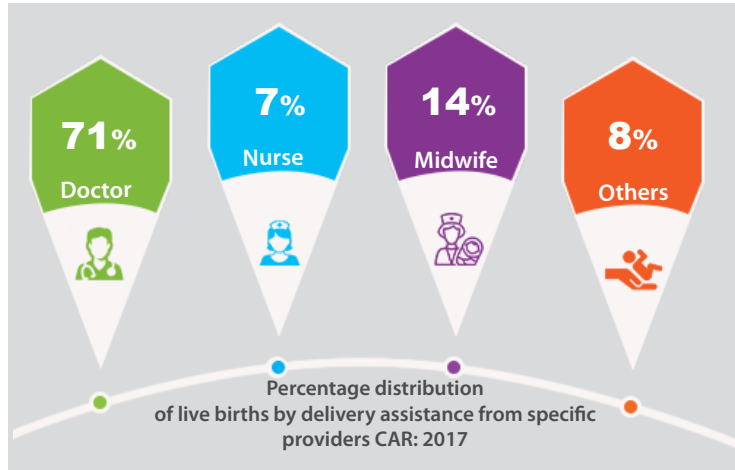
**NEWS CONFERENCE**  
April 25, 2019

Fortune Hongkong Seafood Restaurant,  
Otek St., Baguio City

## 95% of pregnant women in CAR received antenatal care from skilled providers

Data from the 2017 National Demographic and Health Survey (NDHS) showed that 95.0% of women in the Cordillera region received antenatal care (ANC) from skilled providers for their recent birth. ANC is the care that women receive during pregnancy that helps ensure healthy outcomes for women and newborns. Skilled providers include doctors, nurses and midwives. The 2017 NDHS survey further reported that doctors were the most common service providers at 55.0%, followed by midwives at 33.0% and nurses at 8.0%. Almost 2.0% of the women did not receive ANC for their most recent birth.

In general, about 94.0% of women received antenatal care (ANC) from a skilled provider for their recent birth. Midwives were the most common



ANC service providers at 50.0%, followed by doctors at 39.0% and nurses at 4.0%. Almost 3.0% of women did not receive ANC for their most recent birth

### 92% of live births in CAR are delivered by skilled maternal health providers

About 84.0% of live births in the country were delivered by a skilled provider. The majority of births were delivered by a doctor at 49.0%, followed by midwife at 30.0%. In the Cordillera Administrative Region (CAR), 92.0% of live births were delivered by a skilled provider. The majority of births were delivered by a doctor at 71.0%, followed by a midwife at 14.0%, and nurse at 7.0%.

Other means of birth delivery is through the assistance a traditional birth attendant or *hilot*, barangay health worker, and relative; while some women give birth without any assistance. In the country, 16.0% of live births were delivered under this category, while 8.0% in CAR.

### 85% of childbirths in CAR are delivered in a health facility

In the country, 78.0% of births were delivered in health facilities where 55.0% were delivered in a public facility while 23.0% in a private facility. Meanwhile, one in five births were delivered at home. In the Cordillera region, 85.0% of births were delivered in a health facility, 77.0% of births were delivered in a public facility, and 8.0% were delivered in a private facility.

### 95% of women in CAR received postnatal care; 86% for newborns

On a national scale, 86.0% of women had postnatal check during the first 2 days of their recent birth with 86.0% of newborns receiving postnatal care. Postnatal care includes women and newborns who received a check from a doctor, midwife, nurse, barangay health worker, or traditional ... [continued on page 8](#)



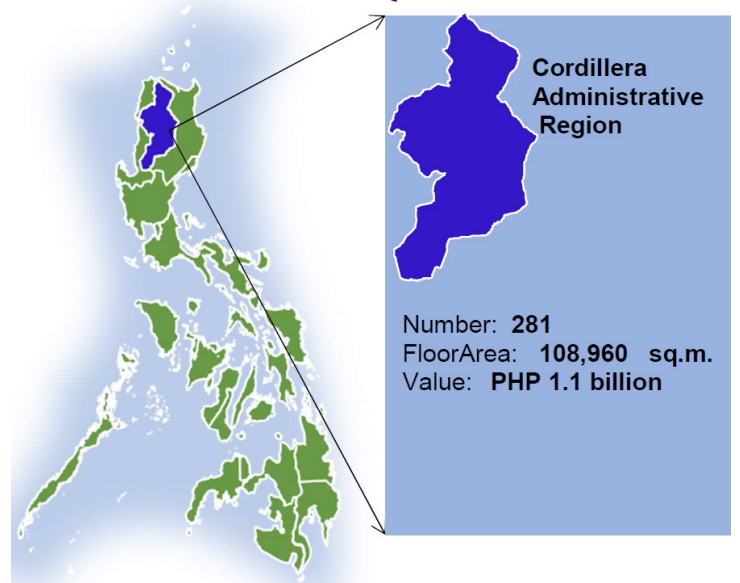
## 243 buildings constructed in CAR for the 3rd Quarter of 2018

There were 243 new building constructions recorded from the approved building permits in CAR for the 3rd Quarter of 2018, sharing about 0.6% to the total building constructions in the country during the quarter. These constructions had a total floor area of 75,448 square meters and valued at PHP 1.0 billion. Constructions decreased by 21.3% from the 309 building projects recorded in the same quarter in 2017. Private construction statistics from approved building permits relate to data on new constructions and additions, alterations and repairs of existing residential and nonresidential buildings, and other structures undertaken in all cities/municipalities of the country.

### 3 in 4 buildings are residential buildings

Constructions for residential buildings accounted 73.9% of the region's building projects in the 3rd Quarter of 2018, a decrease of 20.3% from the 231 projects reported in the same quarter in 2017. These buildings had a total floor area of 57,034 square meters and were valued at PHP 701.8 million. Non-residential buildings comprised 14.5% with a total floor area of 17,600 square meters, and valued at PHP 273.2 million. Constructions for non-residential buildings decreased by 30.8% from 52 projects recorded in the 3rd Quarter of 2017. Alterations and repairs of buildings comprised 7.2%. This decreased by 10.0% as compared to the same quarter in the previous year. Street furniture/landscaping/signboard and additions shared 2.4% and 2.0%, respectively.

### Number, Floor Area and Value of Constructions in CAR: Second Quarter 2018



### Most residential buildings are in Benguet and Baguio City

There were 119 approved building construction projects of all types of residential buildings in the 3rd Quarter of 2018 in Benguet and Baguio City. A total of 107 units were designed for single occupancy, 2 units for duplex/quadruplex, 9 new apartments/accesoria, and 1 residential condominium. Apayao recorded 37 building constructions all designed for single occupancy. ... [continued on page 7](#)



Baguio City.... from page 1

category, while Academia de Sophia International representative Aimeirene Yzabel B. Ines, and University of the Cordilleras' Axa Gwen Dao-ilang came second and third, respectively. The winners were awarded with Certificates of Recognition, cash prizes and tokens consisting of school supplies. The contests were part of the annual celebration of the Civil Registration Month every February pursuant to Presidential Proclamation No. 682, signed by then President Corazon Aquino on 28 January 1991.

**TWG up.... from page 1**

the Benguet Provincial Planning and Development Office and the Baguio City Planning and Development Office.

The TWG is tasked to undertake the compiling of environment statistics using the United Nations (UN) Framework for the Development of Environment Statistics (FDES) 2013 and formulate measures that will resolve data gaps and address other statistical issues related to environment. One of the outputs of the group will be the publication of a Regional Compendium of Environment Statistics for CAR covering certain periods. The compilation of regional environment statistics provides an organized structure in the collection and compilation of environment statistics which will enhance the databanks of environment statistics in the region. This will be patterned on the Compendium of Philippine Environment Statistics (CPES). Environment and natural resources statistics are essential in planning and policy formulation, for climate change mitigation and adaptation, for monitoring of programs, projects, and the Sustainable Development Goals (SDG) and for provision of data support to other cross-cutting environmental issues.

## CAR exports \$68 M worth of goods

The Free on Board (FOB) value of export goods of the Cordillera Administrative Region (CAR) in October 2018 was recorded at \$68,469,045. FOB is the value of the goods free on board the carrier at the frontier of the exporting country which includes inland freight, export duty and other expenses, with the exception of ocean freight, insurance and consular fees. The FOB values are obtained directly from the source documents. However, for cases where the FOB values declared in the source documents are not in US dollars, these values are converted to US dollars. The average US dollar rate for the month which is computed as the total daily rate of transactions divided by the number of working days in a month is used in converting FOB value to FOB US dollar value.

The FOB value of \$68,469,045 exported by CAR in October 2018 reflects a drastic decrease of 50.0% as compared to the \$139,479,583 value of exports value recorded in same month in 2017. Likewise, it posted a decrease of 1.4% from the amount of \$938,208 recorded last September 2018.

On the other hand, the region's total volume of production was recorded at 165,935 kilograms (kg) in October 2018. The volume of exports drastically declined as well compared to the 237,357 kg produced in same month last year, and increased by 16.5% compared to the production volume in October 2018.

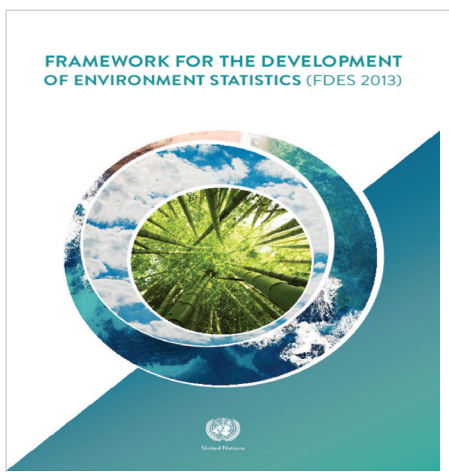
### Exports by Commodity

By export commodity, those that were largely produced and exported for the month of October 2018 were machinery and mechanical appliances; electrical equipment; parts thereof; sound recorders and reproducers, and parts and accessories of such articles were. These accounted for 55.3% of export goods in September and valued at \$38,413,066; while 50.3% in October 2018 and were valued at \$34,422,848.

Vehicles, aircraft, vessels and associated transport equipment shared 33.8% in the total exports of the region, and were valued at \$23,149,251 in sales receipts. Works or arts, collectors' pieces and antiques ranked as third highest produced commodity .... continued on page 5



**166 Thousand kg of export goods produced in October 2018**



## Top 5 Export Commodities of CAR October 2018

	50.3% Machinery and Mechanical Appliances
	33.8% Transport Equipments
	13.0% Works or arts, collectors' pieces and antiques
	1.6% Pearls, stones, metals, jewelries, and coins
	0.5% Miscellaneous manufactured products

**CAR exports .... from page 4**

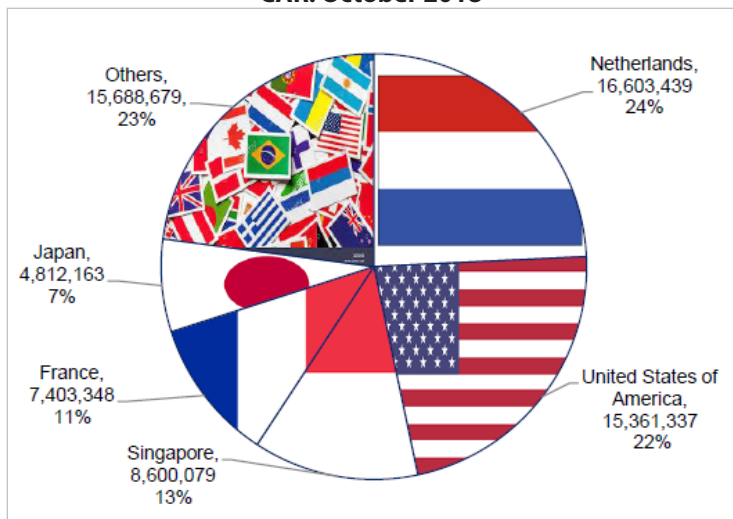
with a share of 13.0% amounting to \$8,917,313. This was followed by natural or cultured pearls, precious or semi-precious stones, precious metals, metals clad with precious metals and articles thereof; imitation jewelry; coin with 1.6% share and valued at \$1,069,461. On the other hand, miscellaneous manufactured articles placed fifth with a share of \$310,391 or 0.5% in total exports of the region.

Commodities such as raw hides and skins, leathers (0.4), base metals (0.2), plastics and articles thereof (0.1), optical, photographic, cinematographic, measuring (0.09), articles of stone, plaster, cement (0.03), textiles and textile articles (0.02), and miscellaneous chemical products (0.01) shared 0.9% to the total value of exports or equivalent to 16,993 kg, and value of \$599,781.

**Country of Destination**

The region mostly exported to the Netherlands in October 2018 with 24.2% equivalent to \$16,603,439 in export sales receipts. It was followed by United States of America (USA) with 22.4% or equivalent to \$15,361,337 exports value. Singapore came third with total of \$8,600,079 value of goods. Meanwhile, the total value of goods exported to France amounted to \$7,403,348 (11%). The region also exported to Japan with exports value of \$4,812,163 (7%), and to other countries with aggregated value of \$15,688,679 (23%).

**Country of Destination of Exports Goods, CAR: October 2018**



**Rice stocks down by 7%, corn up by 8%**

The Philippines' rice household stocks inventory was recorded at 1,527,174 metric tons (MT) as of December 2018. This decreased by 6.7% as compared to the 1,636,526 MT stocks recorded in the same month in 2017. In the Cordillera region, the household stocks inventory was estimated at 57,985 MT, comprising 3.8% of the national household stocks. This was lower by 0.3% from the 58,174 MT inventory in 2017.

Region/Province	Rice Stock (MT)		% Change 2017 & 2018
	Dec. 1, 2017	Dec 1, 2018	
<b>Philippines</b>	<b>1,636,526</b>	<b>1,527,174</b>	<b>(6.7)</b>
<b>CAR</b>	<b>58,174</b>	<b>57,985</b>	<b>(0.3)</b>
Abra	11,963	12,387	3.5
Benguet	14,392	12,512	(13.1)
Ifugao	7,348	7,451	1.4
Kalinga	7,007	14,115	101.4
Apayao	10,207	5,851	(42.7)
Mountain Province	7,257	5,669	(21.9)

Household stocks in the provinces of Benguet, Apayao and Mountain Province showed a decreasing trend, contributing to the decrease of the regional stocks. On the other hand, household stocks in the provinces of Abra, Ifugao and Kalinga showed an increasing trend with Kalinga recording a significant increase of 101.4%. Among provinces, Kalinga had the biggest share of the regional rice household stocks with 24.3% (14,115 MT), followed by Benguet with 21.6% (12,512 MT), and Abra with 21.4% (12,387 MT). Meanwhile, Mountain Province had the least share of stocks with 9.8% (5,669 MT).

**KALINGA has the biggest share on the regional rice household stocks with a total of 24%**

The monthly average rice household stocks in 2018 was estimated at 44,493 MT. The biggest stocks recorded was during the month of December at 57,985 MT, followed by February at 54,815 MT. The smallest stocks recorded in 2018 was in the month of April at 34,252 MT. As compared

to the inventory in 2017, the highest household stocks recorded was in November at 64,344 MT, followed by December at 58,174 MT and February at 53,720 MT. The smallest stocks recorded was in June at 36,905 MT.

Monthly household stocks decreased in most months of 2018. The biggest decline was observed in November with 21.2% decrease, April with 18.7%, and August with 17.4%. On the other hand, household stocks for the months of January and February increased by 3.5% and 2.0%, respectively.

The national corn household stocks inventory increased by 8.3% in 2018 or to 96,099 MT from the 88,749 MT stocks inventory in 2017. The corn household stocks in CAR were estimated at 1,106 MT, comprising of only 1.2% of the national household stocks. However, the regional household stocks increased by 96.1% (1,106 MT) from the 564 MT stocks recorded in 2017.

**96.1%** is the increase of corn regional household stocks from 2017 to 2018

**Philippine Statistics Authority**

**NOTICE TO THE PUBLIC**

Please be advised that [www.philsysid.com](http://www.philsysid.com) is not the official website of the PhilSys Registry Office (PRO) and is not in any way connected to the PSA. For any official information regarding the PhilSys, please visit <http://psa.gov.ph/philsys> or check our Facebook page at <https://www.facebook.com/PhilippineStatisticsAuthority>.

For more information, you may also reach us at 616-63-31 or e-mail at [nids.staff@psa.gov.ph](mailto:nids.staff@psa.gov.ph).

Thank you.

**LISA GRACE S. BERSALES, Ph.D.**  
Undersecretary  
National Statistician and Civil Registrar General

## Cordillera cuts imports by 19%

Imports of the Cordillera Administrative Region (CAR) was recorded at \$117,667,233 in October 2018. On quarter-on-quarter basis, imports declined by 19.0% as compared to \$144,503,568 recorded foreign purchase in the same period in 2017. On monthly basis, the value of imports increased by 0.92% from the \$116,599,797 recorded in September 2018. The region's total consumption volume of imports registered at 521,825.0 kilograms (kg). The volume of imports increased in October 2018 as compared to the volume of 501,877.2 kg consumed in same month in October 2017. Also, it increased by 15.9% as compared to 450,076.2 kg produced in September 2018.

### Imports by Commodity

CAR incurred a total expense of \$112,162,668 for the region's top five imports for 2018 which accounted for 95.3% of the total value of imports. This registered a drop of 19.8% from the amount of \$139,874,677 spent in 2017. Electrical machinery and equipment and parts thereof, accounting for 53.9% of the total imports value posted a decrease of 13.7%, from \$73,443,581 in 2017 to \$63,406,565 in 2018. Commodities and transactions not classified elsewhere ranked second with 18.5% share of the total imports worth \$21,627,562. This was lower by 31.4% from \$31,545,125 incurred in 2017. Aircraft, spacecraft, and parts thereof which ranked third, shared 15.5%, posting a decrease of 4.1% or equivalent to \$18,213,894 in 2018. This was from the amount of \$18,996,991 recorded value in 2017. Nuclear reactors, boilers, machinery and mechanical appliance ranked fourth with 3.9% share, decreasing by 42.7% or to \$4,573,129 in 2018 from \$7,976,607 in 2017. Optical, photographic, cinematographic, measuring, checking, precision, medical or surgical instruments and apparatus ranked fifth, comprising 3.7% of the total imports. This decreased by 45.1% from \$7,912,677 in 2017 to \$4,341,581 in 2018.

Rounding up the list of top imports in October 2018 were plastics and articles thereof with value of \$1,423,745 declining by 75.7% from the amount of imports in October 2017; natural or cultured pearls, precious or semi-precious stones, precious metals clad with precious metals and articles thereof; imitation jewelry; coin with \$428,247 increasing by 24.2%; and miscellaneous chemical products with \$345,368 imports value rising by 0.3%.

Top 5 Imports in CAR: October 2018		
	Electrical Machinery and Equipment	\$63,406,565
	Commodities and transactions	\$21,627,562
	Aircrafts and Spacecrafts	\$18,213,894
	Nuclear Reactors and Machinery	\$4,573,129
	Optical, photographic, cinematographic, and surgical instruments	\$4,341,518

### Country of Source

The country's top ten import sources in October 2018 posted a total import value of \$112,999,346 or 96.0% of the total value of trade. Korea was the region's top source of imports, accounting for \$43,511,436 or 37.0% total value of imports. Electrical machinery and equipment and parts thereof; sound recorders and reproducers, television image and sound recorders and reproducers and parts and accessories of such articles comprised the majority of imported products from Korea and were billed at \$42,021,233 or 35.7%. Aircraft, spacecraft, and parts thereof were valued at \$528,504 or 0.5%.

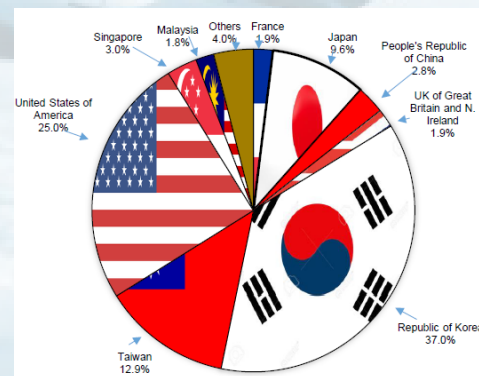
USA ranked as the region's second largest source of imports with a total value of \$29,469,078 or 25.0% of the total FOB. Imported goods purchased from USA consisted of commodities and transactions not classified elsewhere (reserved for special uses by contracting parties) worth \$11,412,251 or 9.6% of the region's total imports. Aircraft, spacecraft, and parts thereof ranked the second highest import from USA with \$9,864,929 or 8.4%.

Taiwan ranked third with \$15,185,591 or 12.9% of total imports value in October 2018. Major imports from Taiwan were commodities and transactions not classified elsewhere (reserved for special uses by contracting parties) with purchases worth \$8,258,643 accounting for

7.0% of the total. Electrical machinery and equipment and parts thereof; sound recorders and reproducers, television image and sound recorders and reproducers and parts and accessories of such articles came second valued at \$5,657,132 or 4.8%.

Japan ranked fourth with total imports amounting \$11,332,581 or 9.6% of the total FOB value. Electrical machinery and equipment and parts thereof; sound recorders and reproducers, television image and sound recorders and reproducers and parts and accessories of such articles were billed at \$7,397,020 or 6.3%; while optical, photographic, cinematographic, measuring, checking, precision, medical or surgical instruments and apparatus cost \$1,489,543 or 1.2% share.

Top 10 Country of Source of Imports, CAR: October 2018



Singapore and China tied as the fifth top import source for the region with total imports of \$3,585,480 or 3.0% and \$3,299,807 or 2.8%, respectively. The top import goods from Singapore were Aircraft, spacecraft, and parts thereof amounting \$1,070,646 or 0.9%, and electrical machinery and equipment and parts thereof; sound recorders and reproducers, television image and sound recorders and reproducers and parts and accessories of such articles amounting \$804,980 or 0.7%.

The top import items from China had a total worth of \$1,402,465, sharing 1.19% to total imports. These were electrical machinery and equipment and parts thereof; sound recorders and reproducers, television image and parts and accessories of such articles. Meanwhile, aircraft, spacecraft, and parts thereof had a total value of \$1,059,940 or 0.90% share to total imports.

**14<sup>th</sup> NATIONAL CONVENTION  
ON STATISTICS  
OCTOBER 1-3, 2019**



Organized by the PHILIPPINE STATISTICAL SYSTEM  
Spearheaded by the PHILIPPINE STATISTICS AUTHORITY

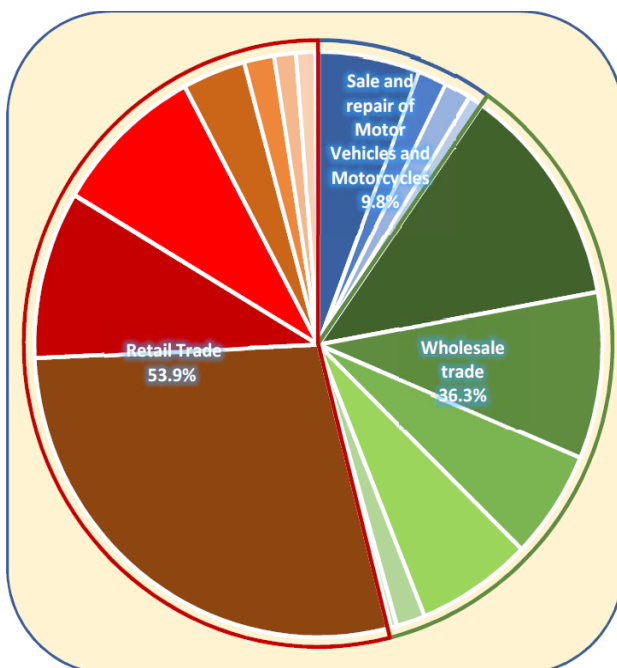
## Workers in establishments up by 3.9%

Workers engaged in the wholesale and retail trade (WRT) activities registered to a total of 501,695 in 8,589 establishments in the country in 2016. This was an increase of 8.5% from the 462,553 employees in 8,332 businesses establishments recorded in 2015. Retail sale in the non-specialized stores generated the most employment with 141,443 trade workers or 28.2 % of the total national employment. Workers in wholesale of household goods followed with 61,973 employees or 12.4 % share to total employment.

Two in five (41.8 %) trade establishments were situated in the National Capital Region (NCR) and one in ten (10.6 %) were in CALABARZON area. Central Visayas (7.7 %), Central Luzon (7.6 %) and Davao (5.7 %) regions also had fair shares in the number of wholesale and retail businesses.

Cordillera region contributed 0.8 % of the trade establishments, following ARMM in having the least number of establishments with 0.1 % share. As top employers, retail sale in nonspecialized stores and wholesale trade of household goods recorded high mean employment per establishment with 89 workers and 83 workers, respectively. NCR had 66 workers per WRT establishment, while trade shops in Western Visayas and SOCCSKSARGEN both had an average of 61 employees. Wholesale and retail establishments in CAR had 52 employees on the average.

**Percentage Distribution of WRT Workers by Sector Groups**



### Compensation of WRT workers at PHP 97.8 billion

Paid employees dominated the WRT workers with 99.6 % share to total employment in 2016. This resulted to a minimal decrease of share to total employment from 99.7 % in 2015, but an increase of 38,559 more paid workers in a year's span. The WRT sector spent a total of PHP 97.8 billion to compensate its 499,813 employees in 2016. This was a 4.0 % increase from 2015 with 94.0 billion compensation to 461,254 paid workers engaged in the trade.

The top employer in WRT sector, retail sale in non-specialized stores spent PHP 21.2 billion for the compensation of its 141,173 workers. This was followed by establishments engaged in wholesale of household goods with PHP 18.5 billion compensation, and wholesale of machinery, equipment and supplies with PHP 9.7 billion. Establishments in CAR spent an aggregate amount of PHP 415.3 million to their paid wholesale and retail trade workers in 2016. This resulted to an average annual compensation per employee of PHP 109,336. Trade shops in NCR had the highest expenses for compensation with PHP 61.1 billion for all 237,431 paid employees. Income in wholesale and retail activities exceed expenses by 5.0 %.

Wholesale and retail establishments generated PHP 2.9 trillion total income in 2016, an increase of 7.4 % from PHP 2.7 trillion annual income in 2015. NCR trade stores earned PHP 1.6 trillion or 56.1 % of the total national income. Aggregate income from establishments in CALABARZON came second with PHP 289.9 billion, followed by Central Luzon with PHP 179.6 billion and Central Visayas with PHP 179.5 billion. Retail sale in non-specialized stores contributed the biggest income share with 22.2 % or about PHP 634.9 million. Income from wholesale of household goods and sale of motor vehicles came next with PHP 461.6 billion (16.1 %) and PHP 336.5 billion (11.8 %), respectively.

Expenses hit the PHP 2.7 trillion mark in 2016, an increase of about 181.1 billion or 7.1 % from 2015. Amount spent for compensation of workers only made up 3.6 % of the industry's spending. Among sub-sectors in the wholesale and retail trade, the top contributors to expenses in the industry followed the same pattern as with income: retail sale in non-specialized stores spent PHP 608.3 billion (22.3 %), wholesale of goods with PHP 435.7 billion.

### 243 buildings... from page 3

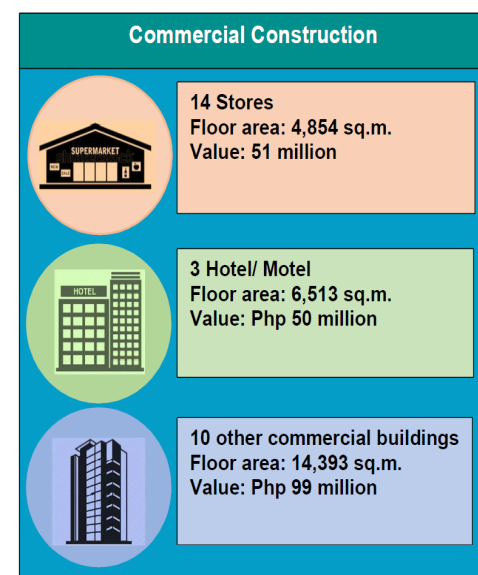
Fifteen housing projects were approved in Kalinga. Ifugao recorded 9 housing projects. Abra had two constructions for housing; while Mountain Province with one housing project.

### Most non-residential buildings are in Benguet

Non-residential constructions consist of commercial buildings, industrial buildings, institutional, agricultural, and other non-residential construction. Benguet posted 42.3% decrease in non-residential building constructions of 15 units from its previous number of 26 approved constructions. These buildings had a total floor area of 9,247 square meters and were valued at PHP 184.5 million. Apayao posted an increase of 66.6% or 10 buildings from the 6 buildings constructed in the 3rd Quarter of 2017. These constructions cost PHP 5.3 million and had total floor area of 389 square meters. Ifugao and Kalinga had the least number of approved non-residential constructions with 8 and 3 buildings, respectively. No non-residential construction activities were undertaken in Abra and Mountain Province.

### 2 in 4 commercial buildings are stores

Stores comprised 56.5% of non-residential commercial building constructions in the 3rd Quarter of 2018. These had a combined floor area of 1,715 square meters and were valued at PHP 16.7 million. Most of the stores were located in Apayao (8), followed by Ifugao (2), Kalinga (2), and Benguet (1). Meanwhile, six new hotels with a total floor area of 3,621 square meters were constructed in Benguet (3), Ifugao (2) and Apayao (1). These had at total value of PHP 54.3 million. Further, a bank with a floor area of 336 square meters and valued at PHP 5.5 million was built in Benguet. An additional of 3 other commercial buildings were constructed in Ifugao (2) and Benguet (1).



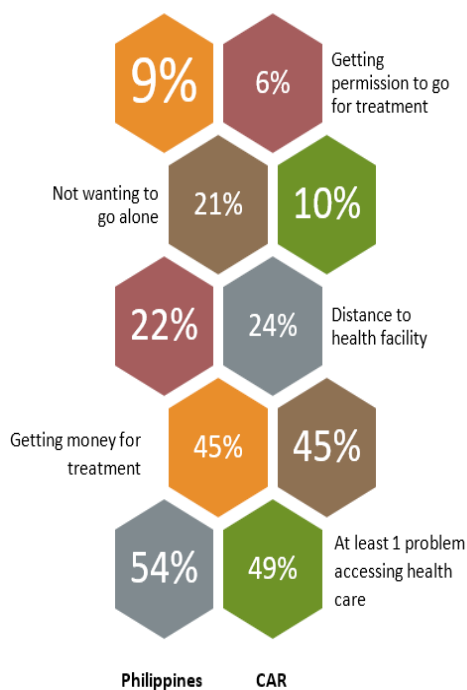
95% of pregnant .... from page 3

birth attendant or hilot. Meanwhile, 95.0% of women in the Cordillera region received postnatal check during the first 2 days of their recent birth, higher by 9.0% than the national rate of 86.0%. About 86.0% of newborns in the region received postnatal care.

**49% of women in CAR experience problem accessing health care**

Among women in the Philippines, 54.0% encountered at least one problem accessing health care, while 49.0% of women in CAR experienced this. Generally, the most common problem was getting money for treatment with 45.0%. This was followed by the problem of distance to a health facility with 22.0% at the national level, and 24.0% at the regional level (CAR).

Percentage distribution of women who reported problems in accessing health care, Philippines and CAR: 2017



Source: 2017 National Demographic and Health Survey

The NDHS is a nationwide survey conducted every 5 years by the Philippines Statistics Authority (PSA) designed to provide data useful for monitoring the population and health situation in the country. It provides up-to-date information on fertility, family planning, and maternal and child health.

The results of the survey are useful inputs to policy formulation and monitoring of activities, researches and programs on health care services during pregnancy and childbirth and after delivery are important for the survival and well-being of both the mother and the infant.



Organized by the Philippine Statistical System  
Spearheaded by the Philippine Statistics Authority

# 14<sup>th</sup> NCS National Convention on Statistics

October 1-3, 2019

*Join Us!*

- Innovate
- Collaborate
- Communicate

The National Convention on Statistics is a triennial event that aims to:

- provide a forum for exchanging ideas and experiences in the field of statistics and for discussing recent statistical developments and prevailing issues and problems of the PSS; and
- elicit the cooperation and support of statisticians and professionals in related fields from the government, academe and private sector towards a more responsive statistical system.

**Features**

- plenary sessions
- invited/contributed paper sessions
- poster sessions
- panel discussions
- statistics trainings, seminars
- Statistical Information Management Exhibit

**Participants**

- Government, private and international organization statisticians, statistical practitioners
- Academicians, Researchers
- Students
- Media

**Deadlines**

Submission of Abstract	03 June 2019
Notice of Acceptance/ Non-Acceptance of Papers	28 June 2019
Submission of Final Manuscript	16 August 2019

**Topics**

- Economic, social and multi-domain statistics
- Statistical theories, methodologies and applications
- Big data, big Earth data, citizen-generated data
- Quality assurance
- Data privacy, confidentiality and protection
- Innovations in statistics
- Industry 4.0
- Statistical literacy and education
- Statistics on new and color economies

<http://www.psa.gov.ph/NCS>    [14thNCS@gmail.com](mailto:14thNCS@gmail.com)    [/14thNCS](#)    [/14thNCS](#)



2018  
CENSUS OF PHILIPPINE BUSINESS AND INDUSTRY

## Support the...

# 2018 Census of Philippine Business & Industry



REPUBLIC OF THE PHILIPPINES  
PHILIPPINE STATISTICS AUTHORITY  
CORDILLERA ADMINISTRATIVE REGION