

SPECIAL RELEASE

Average Retail Prices of Selected Agricultural Commodities in Apayao Province, Cordillera Administrative Region

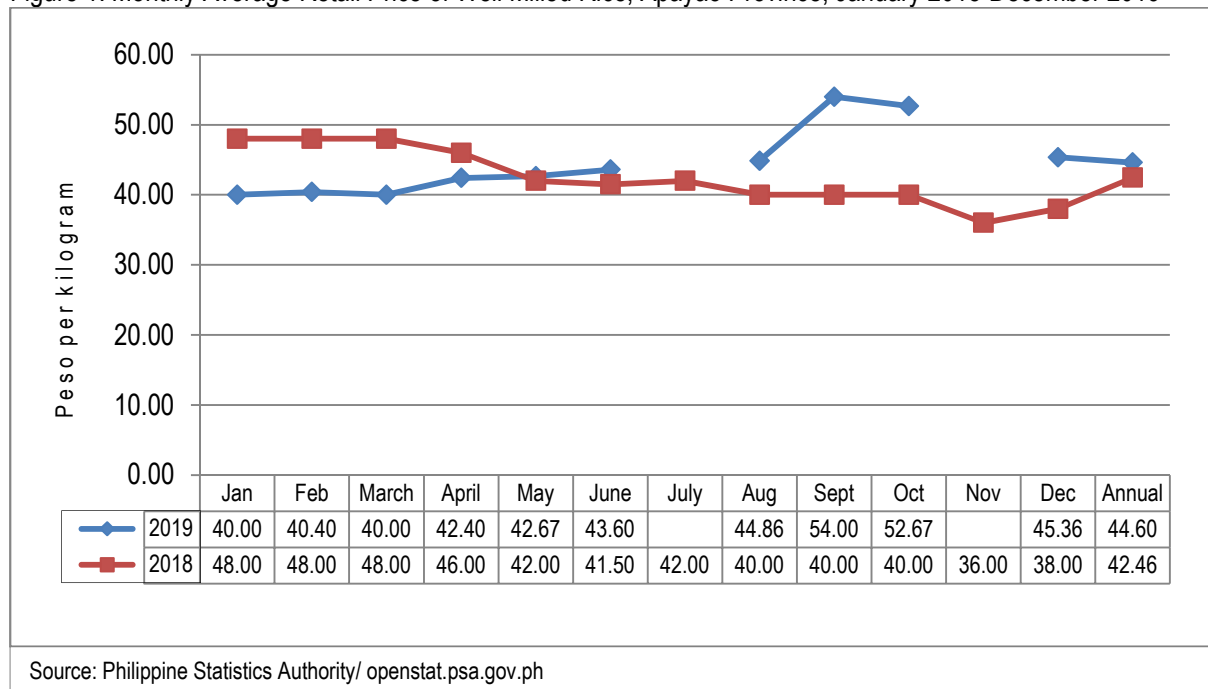
Date of Release: 30 October 2020
 Reference No. 2020-CARAP-SR07

WELL MILLED RICE

The average retail price of well milled rice in 2019 was PhP 44.60 per kilogram. This was 5.0 percent higher than the average retail price of PhP 42.46 per kilogram in 2018. In 2019, the highest recorded price per kilogram was in September at PhP 54.00 and the lowest was in January and March at PhP 40.00.

There was no available data in July and November 2019.

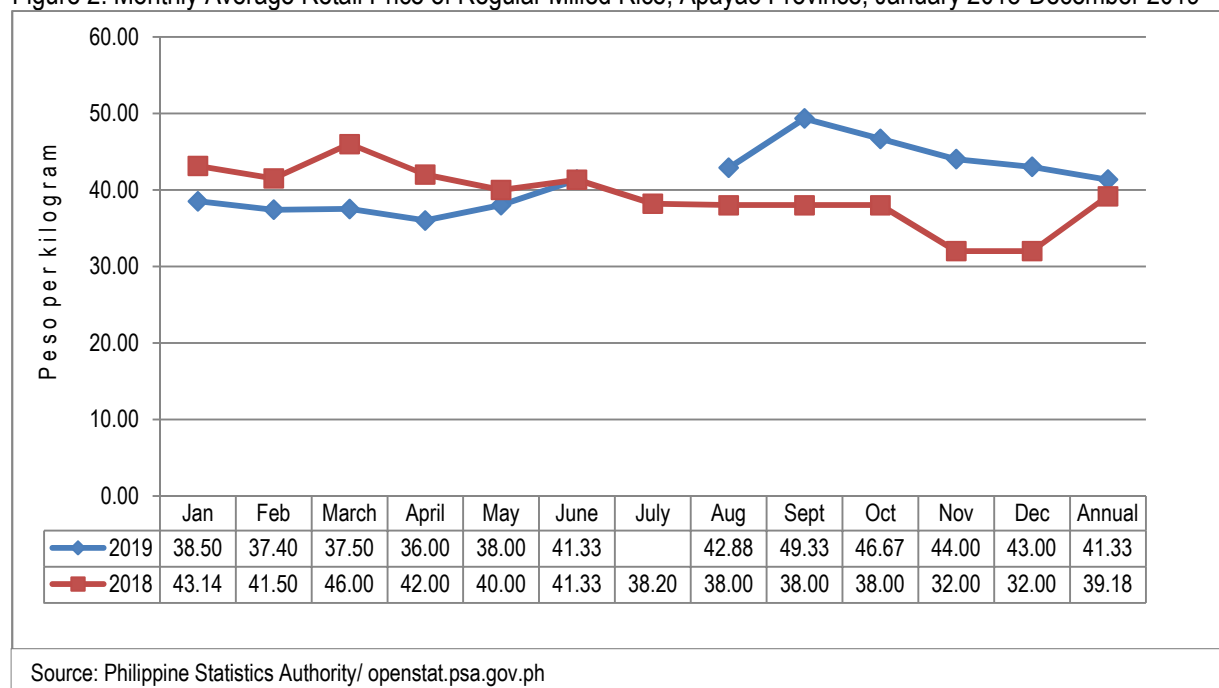
Figure 1. Monthly Average Retail Price of Well Milled Rice, Apayao Province, January 2018-December 2019



REGULAR MILLED RICE

For 2019, the average retail price of regular milled rice was PhP 41.33 per kilogram. This was 5.5 percent higher than the previous year's average price of PhP 39.18. In 2019, except for July with no available data, the lowest and highest retail prices were recorded in April and September at PhP 36.00 and PhP 49.33 per kilogram, respectively.

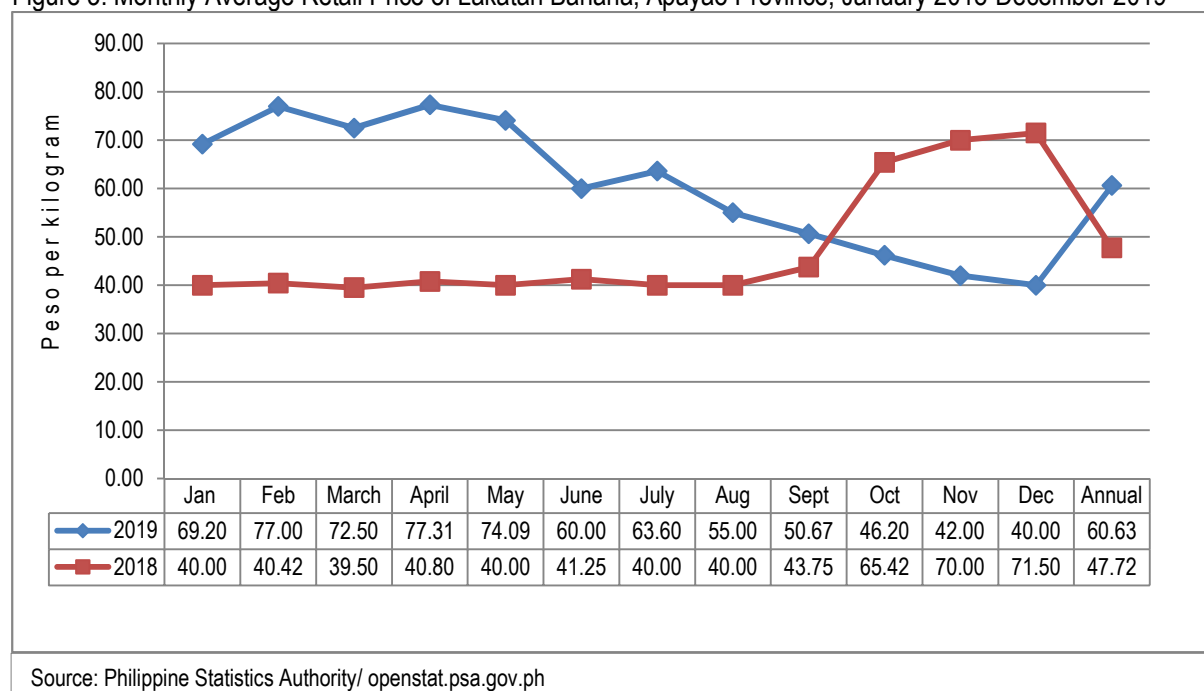
Figure 2. Monthly Average Retail Price of Regular Milled Rice, Apayao Province, January 2018-December 2019



BANANA, LAKATAN VARIETY

The average retail price of lakatan banana in 2019 was PhP 60.63 per kilogram, or higher by 27.1 percent from previous year's average price of PhP 47.72. For 2019, the lowest average price was in December at PhP 40.00 in contrast to same month of 2018 which recorded the highest at PhP 71.50.

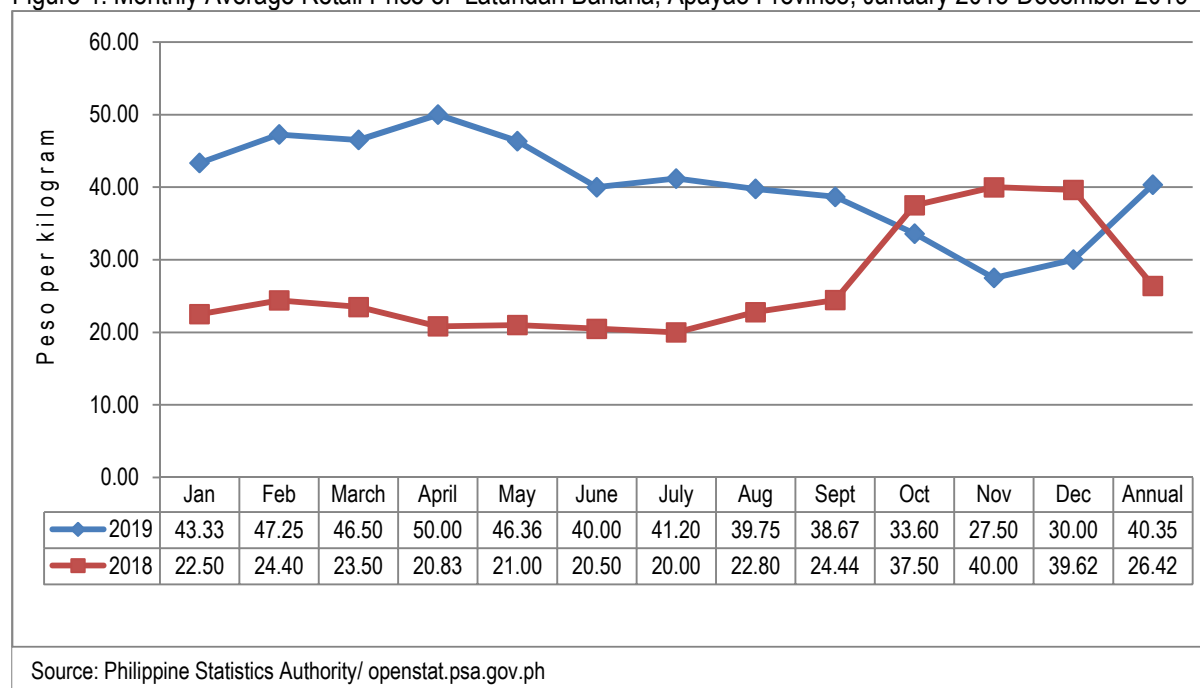
Figure 3. Monthly Average Retail Price of Lakatan Banana, Apayao Province, January 2018-December 2019



BANANA, LATUNDAN VARIETY

In 2019, latundan banana registered an average retail price of PhP 40.35 per kilogram. This was 52.7 percent higher than in 2018 average price of PhP 26.42 per kilogram. The lowest price in 2019 and highest price in 2018 were both recorded in November.

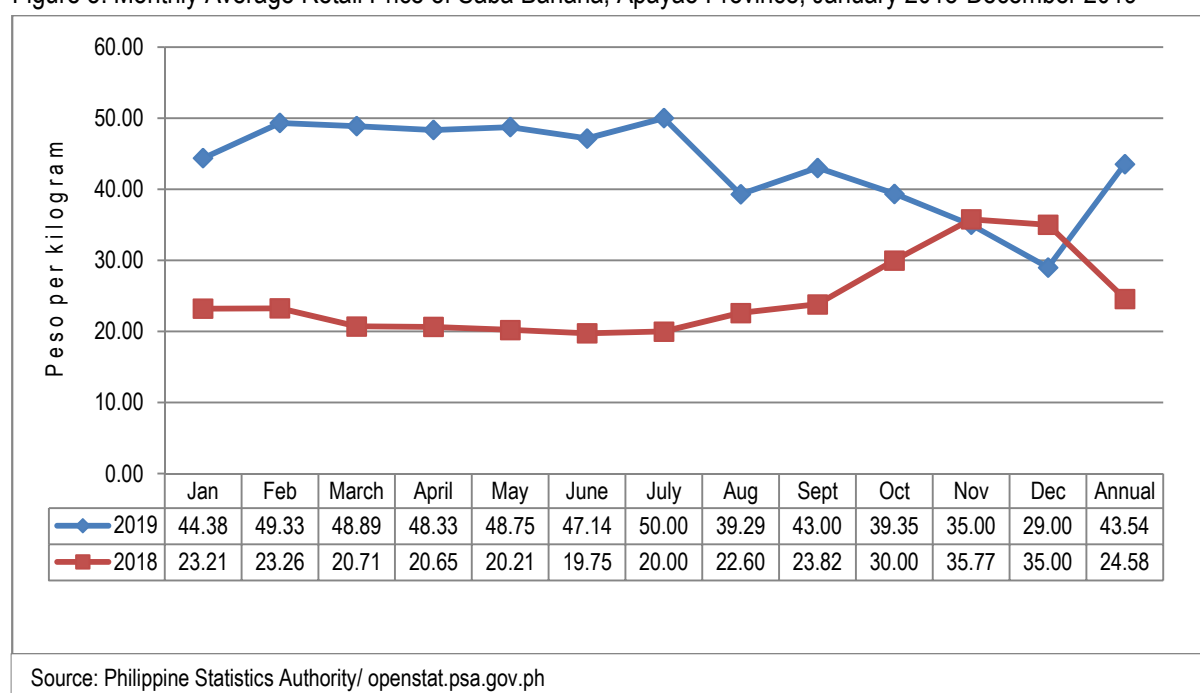
Figure 4. Monthly Average Retail Price of Latundan Banana, Apayao Province, January 2018-December 2019



BANANA, SABA VARIETY

The average retail price of saba banana in 2019 was PhP 43.54 per kilogram, higher by 77.1 percent than previous year's average price at PhP 24.58. For 2019, the lowest average retail price was in December at PhP 29.00 per kilogram and the highest price was in July at PhP 50.00 per kilogram.

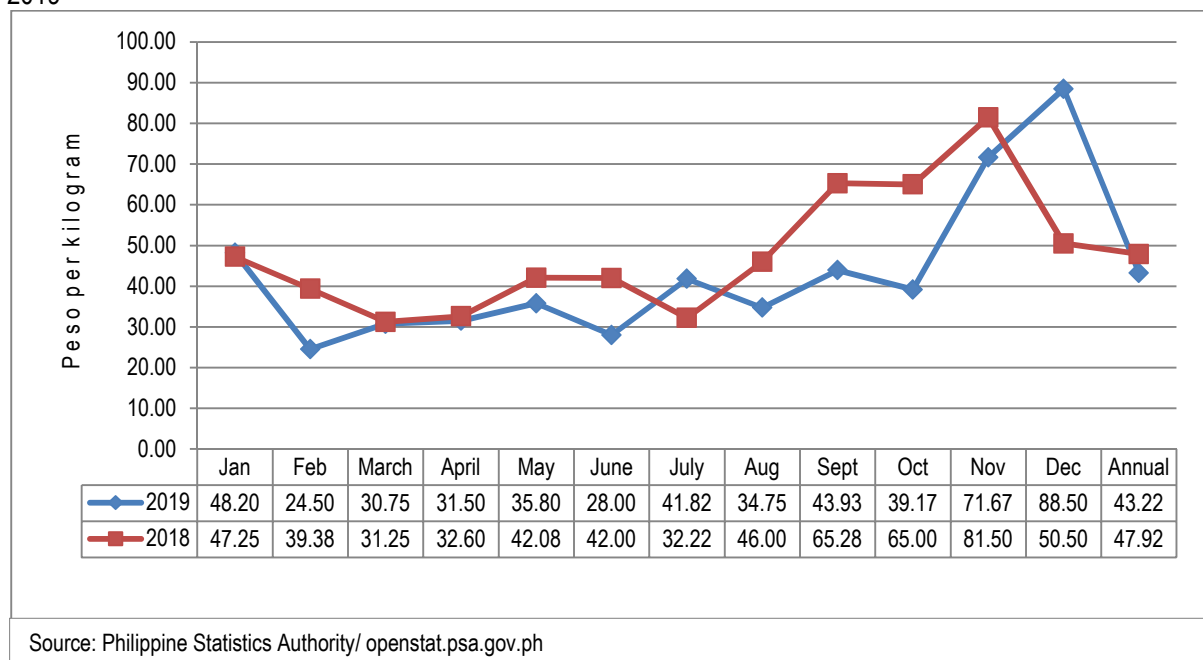
Figure 5. Monthly Average Retail Price of Saba Banana, Apayao Province, January 2018-December 2019



EGGPLANT

The average retail price of long purple eggplant in 2019 was PhP 43.22 per kilogram, or lower by 9.8 percent than the 2018 average price of 47.92. The highest average retail prices were in December for 2019 and November for 2018 with their levels at more than 80.00 per kilogram.

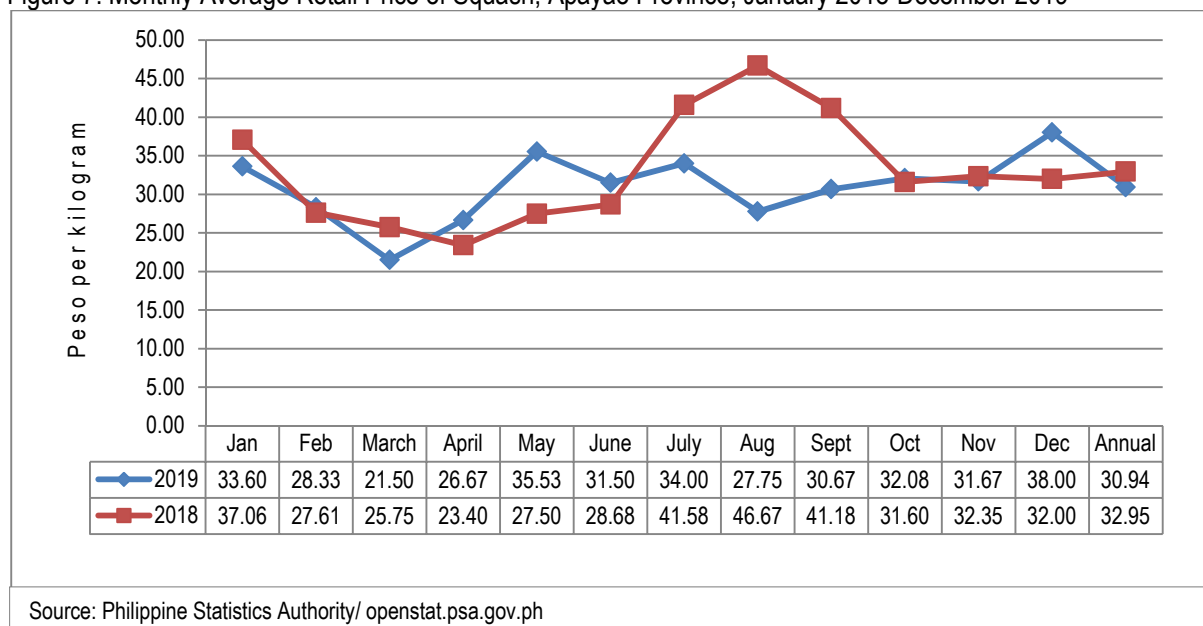
Figure 6. Monthly Average Retail Price of Long Purple Eggplant, Apayao Province, January 2018-December 2019



SQUASH

The average retail price of squash per kilogram for 2019 and 2018 were closer at PhP 30.94 and 32.95, respectively. In 2019, the lowest and highest prices per kilogram were in March and December at PhP 21.50 and P38.94, respectively. In 2018, lowest retail price was in April at PhP 23.40 per kilogram and highest was in August at PhP 46.67 per kilogram.

Figure 7. Monthly Average Retail Price of Squash, Apayao Province, January 2018-December 2019



CONCEPTS AND DEFINITIONS

Retailers – individuals that usually sell two or more products in relatively small quantities for use or consumption rather than for resale.

Retail Markets

May be classified into:

- Permanent Stall Holder- rents a permanent stall in the market.
- Space Holder- does not have a permanent stall but rents a space recognized as his permanent place of business; may display his commodities on top of a table; usually located outside the market structure; occupies the same space everyday or every market day.
- Ambulant Vendor- has no permanent stall nor space in the market; moves around in looking for buyers; usually has a cart to facilitate mobility.

Retails Selling Price - the price at which retailers sell their goods or commodities to consumers in the market place.

Regular Milled Rice (RMR) – rice kernel from which the hull, the gem, outer bran layer, and the greater part of the inner bran layers have been removed but part of the lengthwise streaks (in the dorsal portion) of the bran layers remain in 20 to 40 percent of the kernels.

Well Milled Rice (WMR) – rice kernel from which the hull, the gem, the outer bran layers and the greater part of the inner bran layers have been removed, but parts of the lengthwise streaks of the bran layers remain in one (1) to 19 percent of the kernels.

Approved by:



GEOFFREY B. CALIMUHAYAN

Chief Statistical Specialist