

# SPECIAL RELEASE

## 2023 Value of Production in Agriculture and Fisheries of the Cordillera Administrative Region (At Constant 2018 Prices)

Date of Release: July 19, 2024

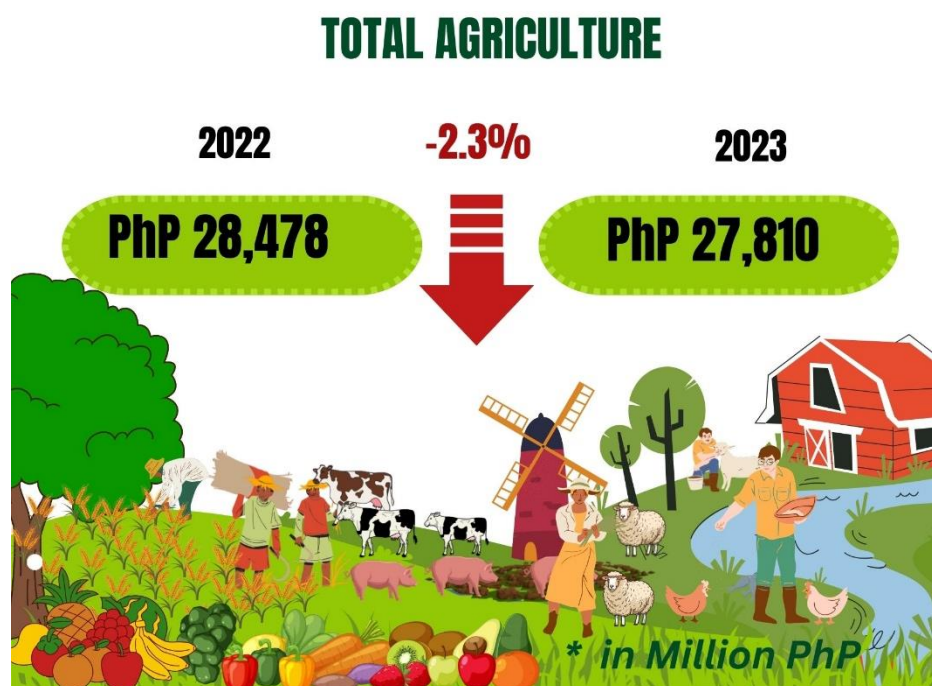
Reference No. SSR 2024-23

*This special release presents the value of agriculture and fisheries in the Cordillera Administrative Region. The value of production is at constant 2018 prices. The valuation is also done for the sub-commodity group (crops, livestock, poultry, and fisheries). These serve as inputs in the estimation of Gross Value Added (GVA) in agriculture and fishery at the regional level.*

*The regional value of production in agriculture and fisheries covers all agricultural commodities, highlighting selected commodities in CAR. For crops, 22 commodities are highlighted. In the case of fisheries, only nine (9) commodities are covered. Meanwhile, all commodities included in the livestock and poultry data system were highlighted.*

### TOTAL AGRICULTURE

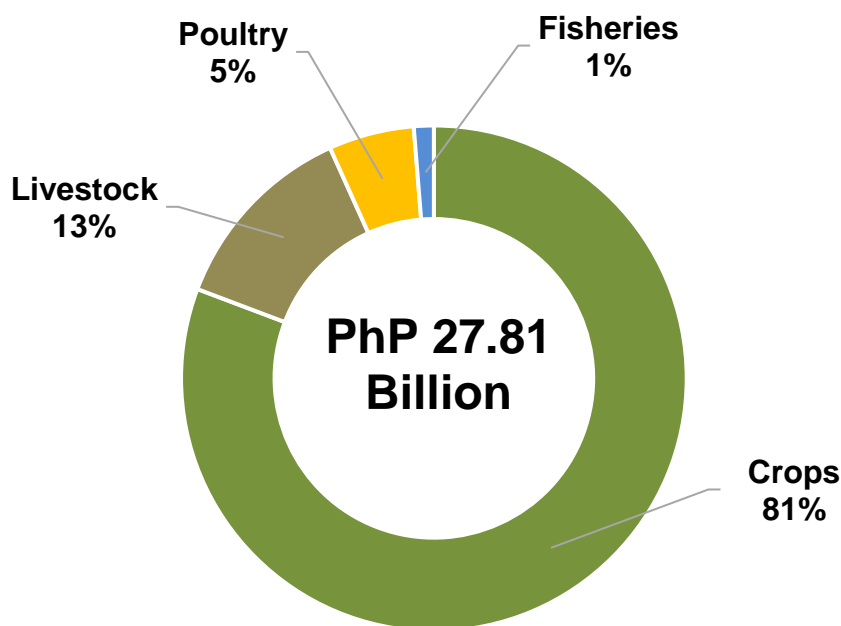
Figure 1. Value of Production of Agriculture & Fisheries, CAR: 2022-2023  
(In Million Pesos)



Source: Philippine Statistics Authority

In 2023, the value of production in agriculture and fisheries in the Cordillera Administrative Region at constant 2018 prices amounted to PhP 27.81 billion. It declined by 2.3% from PhP 28.47 billion in 2022 (Figure 1). The crops sub-sector accounted for the highest share in the total value of agriculture and fisheries with 81%, livestock and poultry came second and third with shares of 13% and 5%, respectively. Fisheries had the least share with 1% (Figure 2).

**Figure 2. Percent Distribution by Sub-sector of Total Value of Production, CAR: 2023**



Source: Philippine Statistics Authority

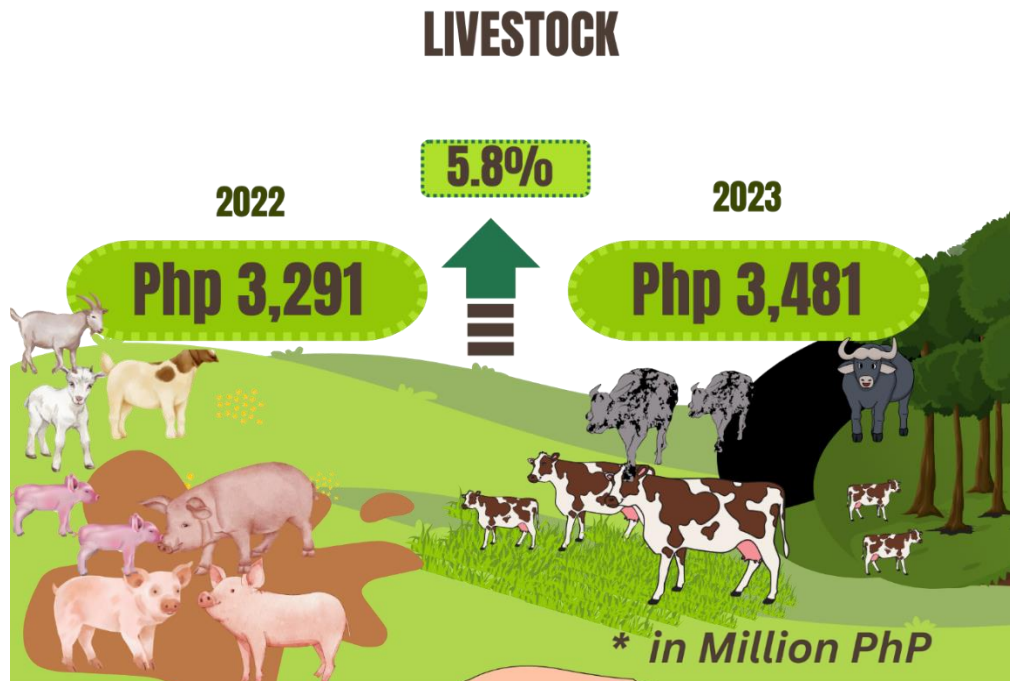
## CROPS

The total value of crops production at constant 2018 prices was recorded at PhP 22.45 billion in 2023. This was 3.6% lower than the 2022 level of PhP 23.30 billion (Figure 3). The top six crops that registered the highest value of production were palay, cabbage, corn, potato, carrots and Chinese cabbage with PhP 6.83 billion, PhP 2.68 billion, PhP 2.47 billion, PhP 2.43 billion, PhP 1.57 billion and PhP 1.11 billion, respectively (Table 1).



## LIVESTOCK

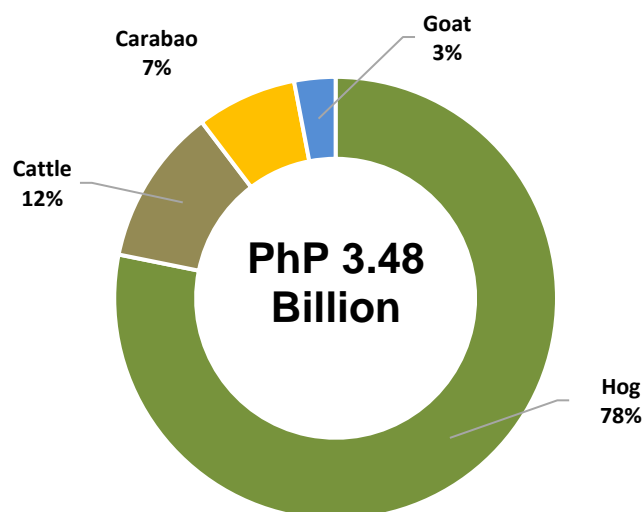
Figure 4. Value of Production of Livestock, CAR: 2022-2023



Source: Philippine Statistics Authority

At constant 2018 prices, the total value of livestock production in CAR was estimated at PhP 3.48 billion in 2023, an increment of 5.8% from the last year's level of PhP 3.29 billion (Figure 4). Swine registered as the top contributor with 78% share, followed by cattle with 12%, carabao with 7% and goat with 3% (Figure 5).

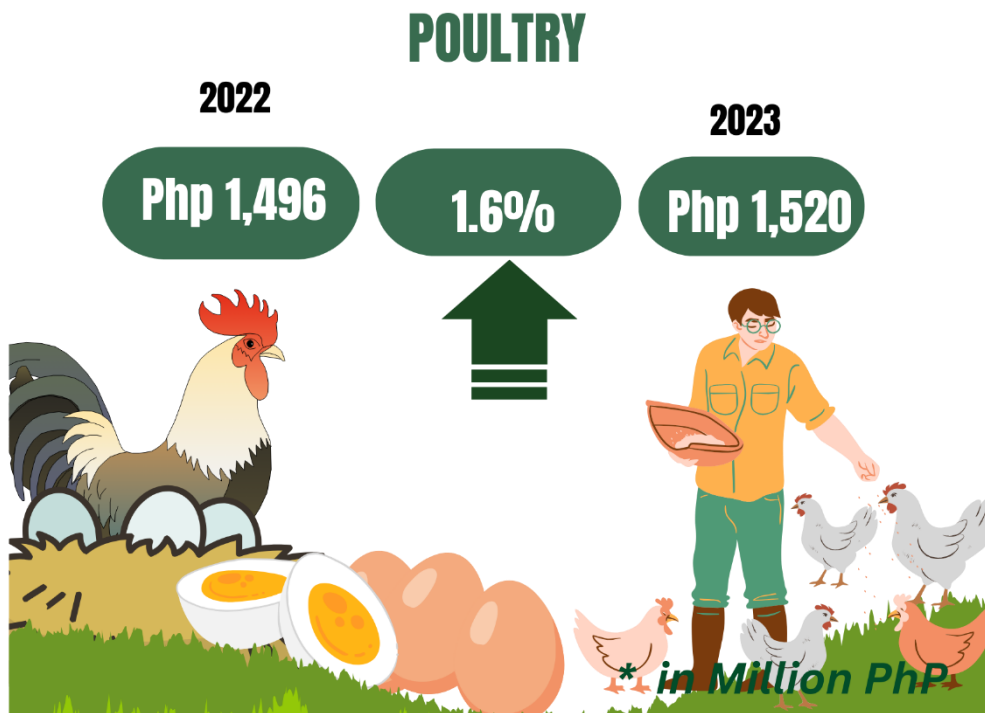
Figure 5. Percent Distribution by Commodity of the Total Value of Livestock Production. CAR. 2023



Source: Philippine Statistics Authority

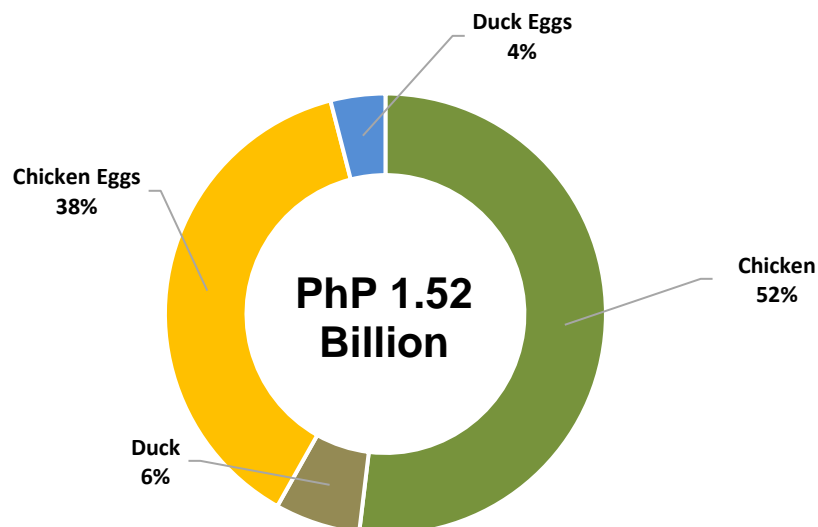
## POULTRY

Figure 6. Value of Production of Poultry, CAR: 2022-2023



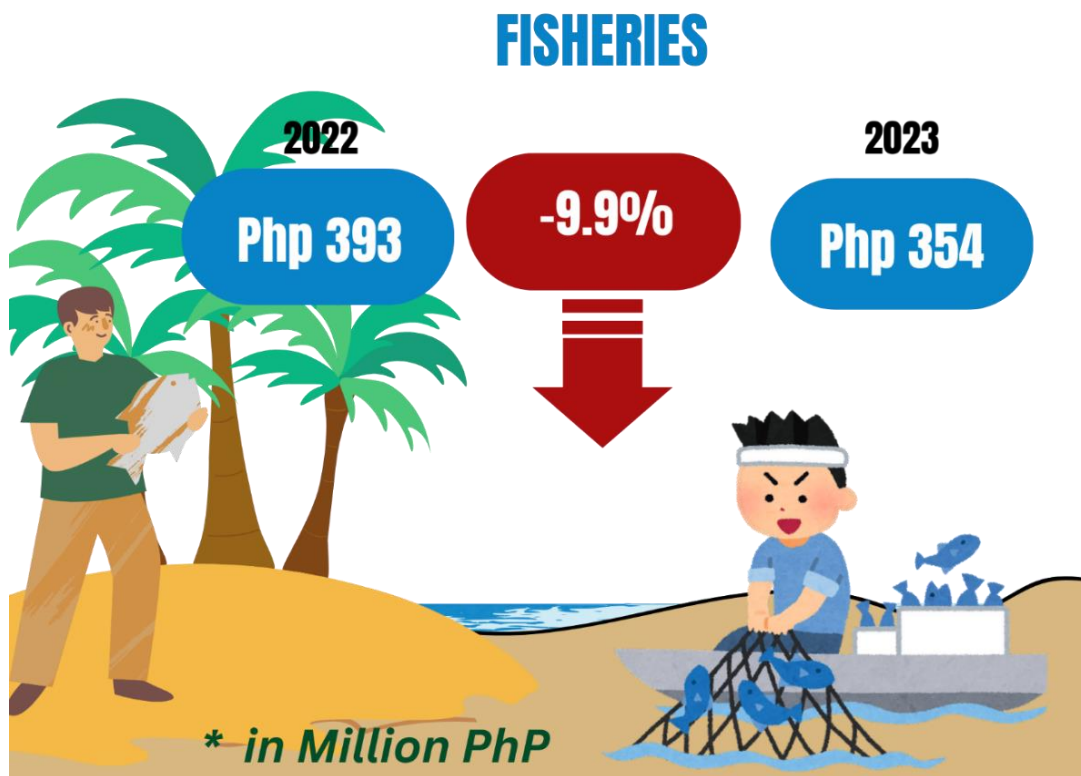
For poultry, the total value of production in 2023 was valued at PhP1.52 billion at constant 2018 prices. The top poultry commodity with the highest contribution in the value of poultry production was chicken with 52% share, followed by chicken eggs with 38% share. Duck and duck eggs had a percentage share of 6% and 4%, respectively (Figure 8).

Figure 7. Percent Distribution by Commodity of the Total Value of Poultry Production, CAR: 2023



Source: Philippine Statistics Authority

Figure 8. Value of Production of Fisheries, CAR: 2022-2023  
(In Million Pesos)



Source: Philippine Statistics Authority

Fisheries, which contributed 1% to the total value of production in agriculture and fisheries, posted a 9.9% reduction, from last year's PhP 393 million in 2022 to PhP 354 million in 2023. Tilapia had the biggest share among species with 86%.

**VILLAFE P. ALIBUYOG**  
Regional Director

/AFRBJ/RJPA/MGVDG

## Technical Notes

Value of Production at Constant Prices - refers to valuation of transactions, wherein the influence of price changes from the base year to the current year has been removed.

Crops Production This refers to the quantity produced and harvested for a particular crop during the reference period. It includes those measured but damaged, stolen, given away, consumed, given as harvesters' share, and reserved. Also included are those productions from "pakyaw" and "contract growers". On the other hand, excluded are those produced but not harvested for whatever reason/s.

Livestock/Poultry Production -refers to the volume of indigenous (locally-raised) animals disposed for slaughter plus animals exported or shipped-out for slaughter both in liveweight equivalent.

Livestock - refers to farm animals kept or raised for consumption, work or leisure. In general, poultry is separated as a distinct group of farm animals. For purposes of censuses and surveys, livestock covers only those that are tended and raised by an operator.

Poultry- a collective term for all domesticated avian for the purpose of food consumption or, the carcass of such avian are processed for human consumption.

Swine – a non-ruminant, cloven-footed animal belonging to family suidae with simple stomach, having a snout, large number of mammary glands, thin skin, and heavy bristles. It is also called hog or pig.

\*\*\*