

# SPECIAL RELEASE

## Third Quarter 2023 Livestock and Poultry Production in the Cordillera Administrative Region

Date of Release: December 28, 2023

Reference No. SSR 2023-49

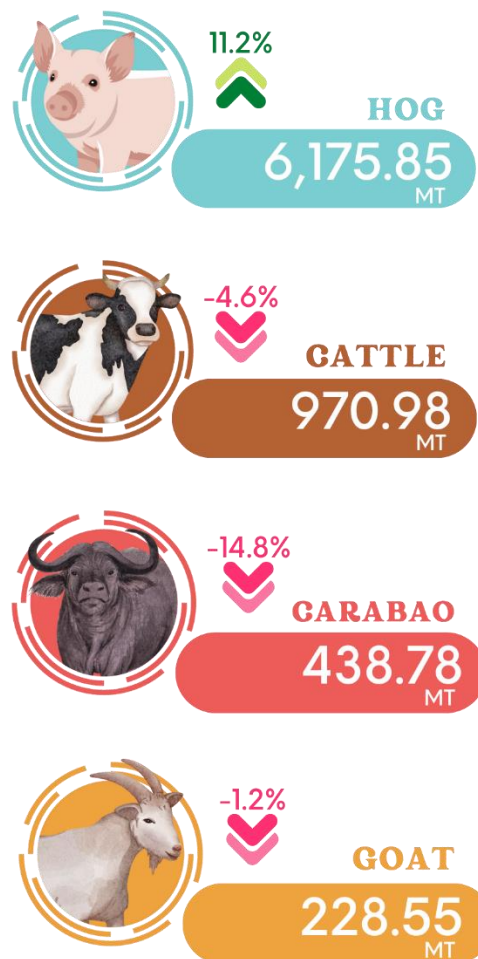
The Livestock and Poultry Surveys are major agricultural surveys conducted quarterly by the Philippine Statistics Authority (PSA). The Backyard and Commercial Livestock and Poultry Surveys generate estimates on inventory, supply and disposition, and other related data of livestock and poultry commodities from households and from establishments, respectively.

This Special Release presents the performance of the livestock and poultry sector of the region during the third quarter of 2023 in terms of total volume of production of livestock commodities, namely, carabao, cattle, hog, and goat; and poultry commodities that include chicken, chicken eggs, duck, and duck eggs.

### Livestock production expands in Q3 2023; hog production drives regional output

The total volume of livestock production in the Cordillera Administrative Region (CAR) in the third quarter of 2023 was estimated at 7,855 metric tons. This was

Figure 1. Volume of Livestock Production and Growth Rates by Animal Type, CAR: Third Quarter 2023



Source: Livestock and Poultry Surveys,  
Philippine Statistics Authority



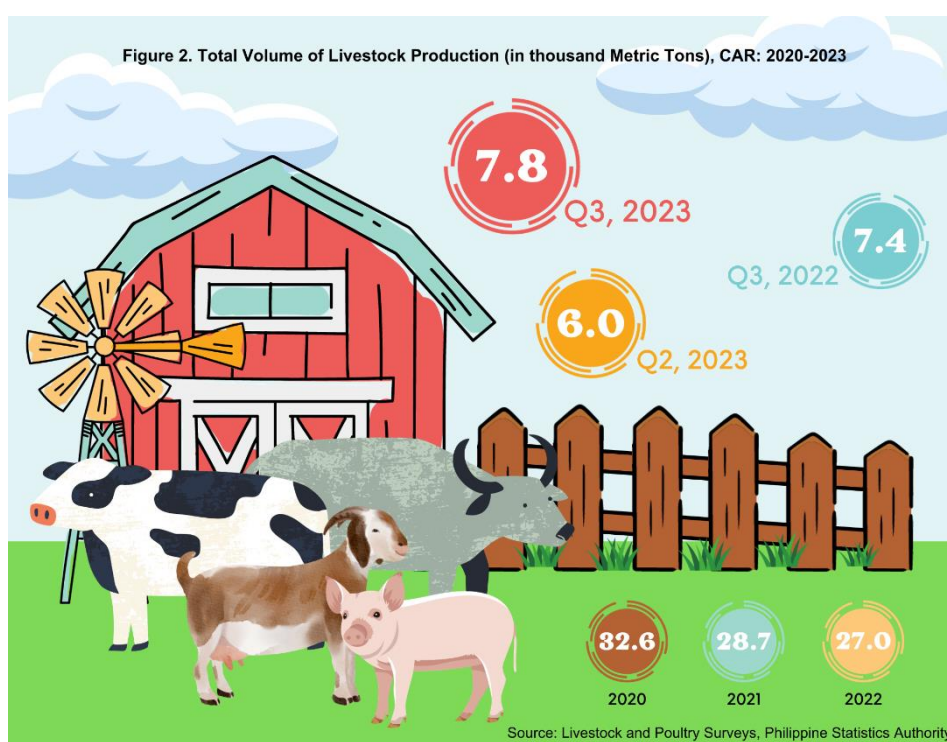
composed of 6,176 metric tons of hog, 971 metric tons of cattle, 439 metric tons of carabao, 228 metric tons of goat, and 40 metric tons of other animals that include sheep, rabbit, and horse.

In the second quarter of 2023, the total volume of livestock production in the region increased by 6.8 percent compared to the production of the same quarter of the previous year. The same trend can be observed in terms of quarter-on-quarter comparison, where production of livestock commodities in CAR grew by 30.6 percent from 6,014 metric tons in the second quarter to 7,855 metric tons in the third.

Of the 6.8 percent production upturn in the region, hog production contributed most with 8.4 percentage points. Meanwhile, the production of carabao, cattle, and goat decelerated the regional production by a combined 1.7 percentage points.

The hog sub-sector recorded a 11.2 percent upswing in production in the third quarter of 2023. This was the fastest and only growing sector in the livestock industry of the region during the period. All other livestock commodities in the region recorded declines, with carabao production contracting the fastest with -14.8 percent, followed by cattle production with -4.6 percent, and goat production with -1.2 percent. Other animals such as sheep, rabbit, and horse also recorded declines in the third quarter.

In terms of share to the total volume of livestock production in CAR, hog production comprised almost 80 percent of the region's total livestock output in the third quarter. Meanwhile, the production of cattle had a 12.4 percent share, while carabao and goat accounted for 5.6 and 2.9 percent of the total CAR livestock production, respectively.



Looking at the bigger picture, the Philippines produced 558,797 metric tons of livestock commodities in the third quarter. Compared to other regions, CAR remained to be one of the smallest contributors to the country's total volume of livestock production with a 1.4 percent share.

Figure 2 shows the total volume of livestock production of CAR across years, highlighting the second and third quarters of 2023 as well as the third quarter of 2022. The region produced about 400 metric tons more during the third quarter of 2023 compared to the total livestock commodities produced during the same quarter of the previous year. Further, the livestock production of the region in the third quarter of 2023 was 1.8 thousand metric tons higher than the previous quarter's recorded output.

### Chicken production pulls poultry sector down in Q3 2023

Figure 3. Volume of Poultry Production and Growth Rates by Poultry Product, CAR: Third Quarter 2023



Source: Livestock and Poultry Surveys, Philippine Statistics Authority

Cordillera's poultry sector, in terms of total volume of production, declined by 2.0 percent from the 3,006 metric-ton production in the third quarter of 2022 to the 2,947 metric tons of poultry products produced during the same quarter of the preceding year.

All poultry commodities posted declines in Q3 2023, with chicken production contracting the fastest at -8.6 percent. This was followed by duck egg production with a 7.8 percent decline. Conversely, chicken egg and duck production grew by 7.3 percent and 0.1 percent, respectively.

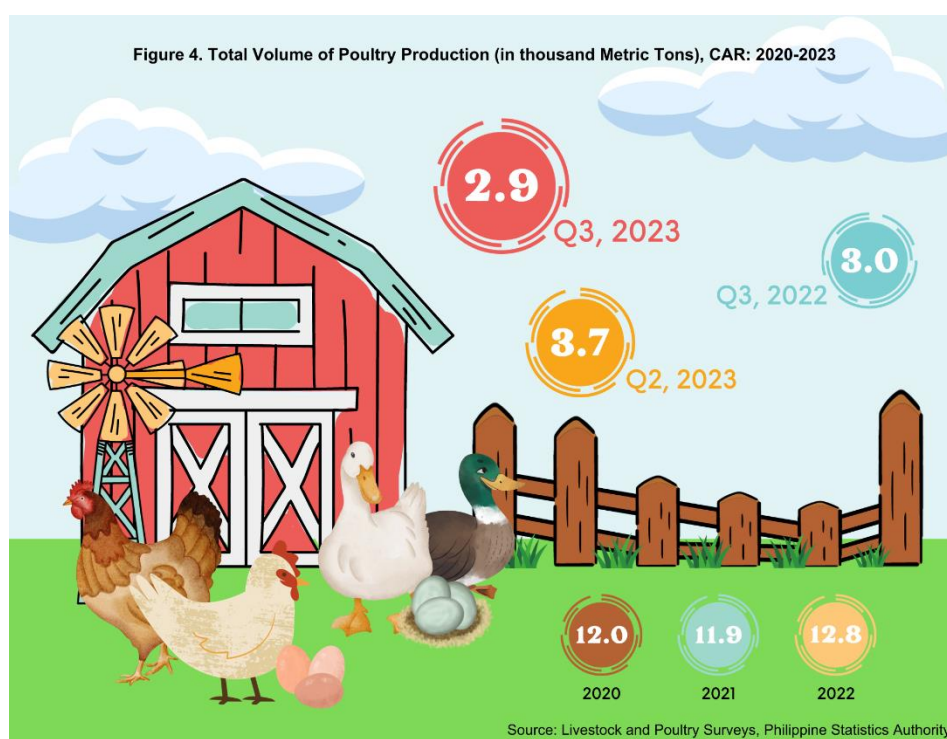
In terms of contribution to the total regional poultry output, chicken and chicken eggs contributed 1,319 and 1,239 metric tons, respectively. Together, these accounted for 86.6 percent of the total CAR poultry

production. On the other hand, duck (147 metric tons) and duck eggs (240 metric tons) combined for the remaining 387 metric tons or 13.1 percent of the total poultry output of the region.

The production of chicken was the main contributor to the decline of poultry production in the region with 4.1 percentage points. Moreover, duck egg production further hampered regional production by 0.7 percentage points.

The total volume of poultry production in the region contributed a minimal 0.6 percent to the 485,617 metric ton output of the poultry sector of the country in the third quarter of 2023.

Figure 4 shows that the total volume of poultry production of CAR in Q3 2023 (2.9 thousand metric tons) was lower than the recorded levels of the previous quarter (3.7 thousand metric tons) and of the same quarter of the previous year (3.0 thousand metric tons).



**VILLAFE P. ALIBUYOG**  
Regional Director

AFRBJ/RJPA/KAMC

<b>Technical Notes</b>
------------------------

The data for this publication were collected by PSA through the two surveys, namely, Backyard Livestock and Poultry Survey (BLPS) and the Commercial Livestock and Poultry Survey (CLPS).

**Livestock** refers to farm animals kept or raised for consumption, work, or leisure. In general, poultry is separated as a distinct group of farm animals. For purposes of censuses and surveys, livestock covers only those that are tended and raised by an operator.

**Livestock/Poultry Production** refers to the volume of indigenous (locally-raised) animals disposed for slaughter plus animals exported or shipped-out for slaughter both in liveweight equivalent.

**Poultry** is a collective term for all domesticated avian for the purpose of food consumption or, the carcass of such avian dressed/processed for human consumption. Fowl is a term used to refer to a specific group of avian sharing common anatomical characteristics, e.g., chicken and turkey.

---