

# SPECIAL RELEASE

## Second Quarter 2023 Livestock and Poultry Production in the Cordillera Administrative Region

Date of Release: November 11, 2023

Reference No. SSR 2023-44

The Livestock and Poultry Surveys are major agricultural surveys conducted quarterly by the Philippine Statistics Authority (PSA). The Backyard and Commercial Livestock and Poultry Surveys generate estimates on inventory, supply and disposition, and other related data of livestock and poultry commodities from households and from establishments, respectively.

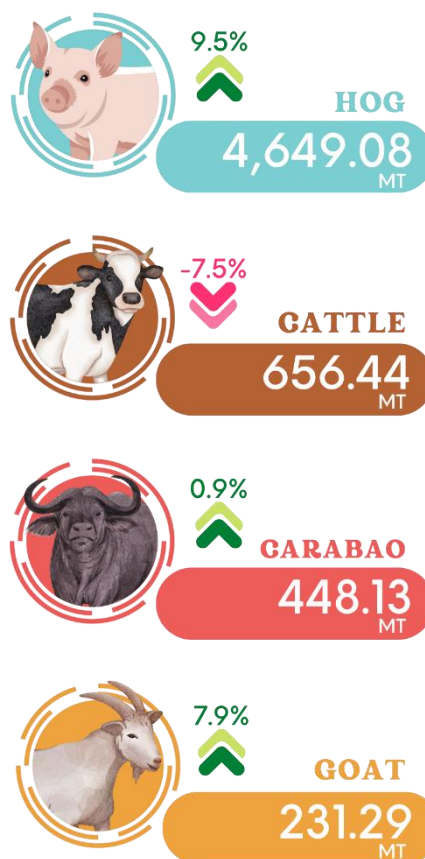
This Special Release presents the performance of the livestock and poultry sector of the region during the second quarter of 2023 in terms of total volume of production of livestock commodities, namely, carabao, cattle, hog, and goat; and poultry commodities that include chicken, chicken eggs, duck, and duck eggs.

### Livestock production improves in Q2 2023

The total volume of livestock production in the Cordillera Administrative Region (CAR) in the second quarter of 2023 was estimated at 5,985 metric tons. This was composed of 4,649 metric tons of hog, 656 metric tons of cattle, 448 metric tons of carabao, and 231.29 metric tons of goat.

The second quarter 2023 total volume of livestock production in the region

Figure 1. Volume of Livestock Production and Growth Rates by Animal Type, CAR: Second Quarter 2023



Source: Livestock and Poultry Surveys, Philippine Statistics Authority



increased by 6.6 percent compared to the production of the same quarter of the previous year. However, quarter-on-quarter comparison shows that the production of livestock commodities in CAR declined by 18.1 percent from 7,310 metric tons in the first quarter to 5,985 metric tons in the second.

Of the 6.6 percent production upturn in the region, hog production contributed most with 7.2 percentage points. This was followed by goat and carabao production with a combined contribution of 0.4 percentage points. On the other hand, cattle decelerated the regional production by 0.9 percentage points.

The hog sub-sector recorded a 9.5 percent upswing in production in the second quarter of 2023. This was fastest growing sector in the livestock industry of the region. Goat production also grew by 7.9 percent and carabao by 0.9 percent. Conversely, cattle production contracted by 7.5 percent.

In terms of share to the total volume of livestock production in CAR, hog production comprised more than three-fourths of the region’s total livestock output in the second quarter. Meanwhile, the production of cattle had 11.0 percent share while carabao and goat accounted for 7.5 and 3.9 percent of the total CAR livestock production, respectively.

Looking at the bigger picture, the Philippines produced 533,704 metric tons of livestock commodities. Compared to other regions, CAR remained to be one of the smallest contributors to the country’s total volume of livestock production with a 1.2 percent share.

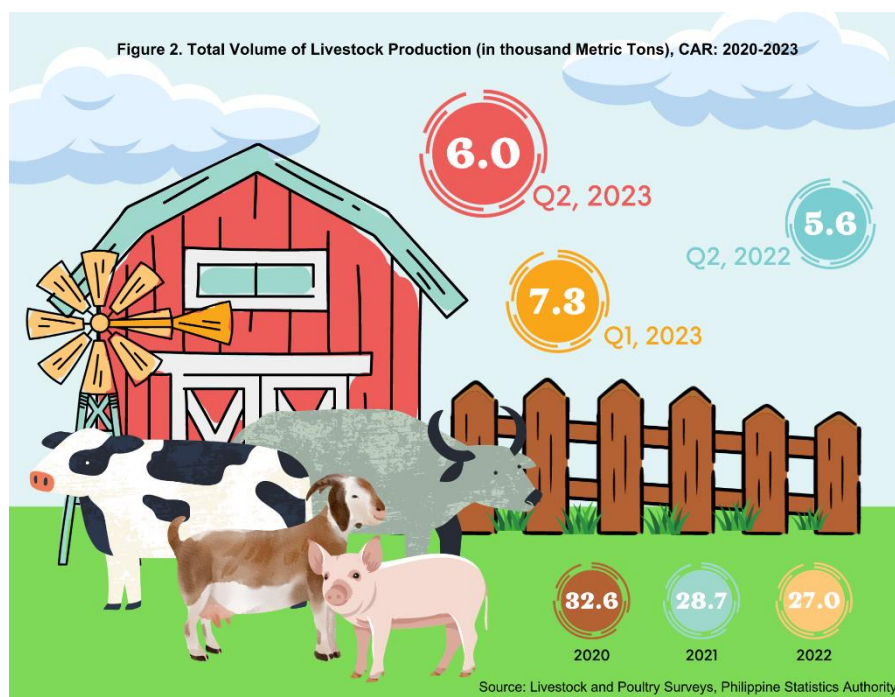


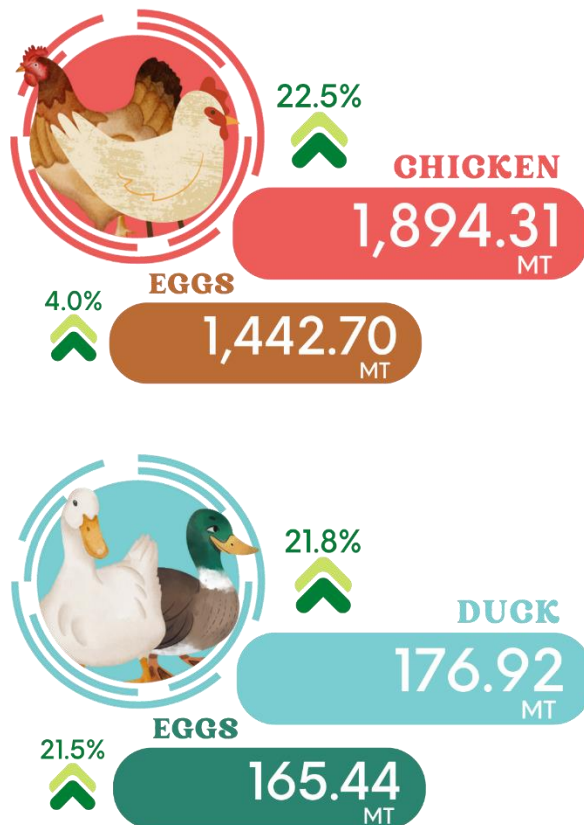
Figure 2 shows the total volume of livestock production of CAR across years, highlighting the first and second quarters of 2023 as well as the second quarter of 2022. The region produced about 400 metric tons more during the second quarter of 2023 compared to the total livestock commodities produced during the

same quarter of the previous year. However, the livestock production of the region in

the second quarter of 2023 was 1.3 thousand metric tons lower than the previous quarter's recorded output.

### Chicken production drives poultry sector in Q2 2023

Figure 3. Volume of Poultry Production and Growth Rates by Poultry Product, CAR: Second Quarter 2023



Source: Livestock and Poultry Surveys, Philippine Statistics Authority

Cordillera's poultry sector, in terms of total volume of production, grew by 14.4 percent from the 3,215 metric-ton production in the second quarter of 2022 to the 3,679 metric tons of poultry products produced during the same quarter of the preceding year.

All poultry commodities posted growths in Q2 2023 with chicken production growing the fastest with 22.5 percent. This was followed by the production of duck with 21.8 percent growth, duck eggs with 21.5 percent, and chicken eggs with 4.0 percent.

In terms of contribution to the total regional poultry output, chicken and chicken eggs contributed 1,894 and 1,443 metric tons, respectively. Together, these accounted for 90.7 percent of the total CAR poultry production. On the other hand, duck

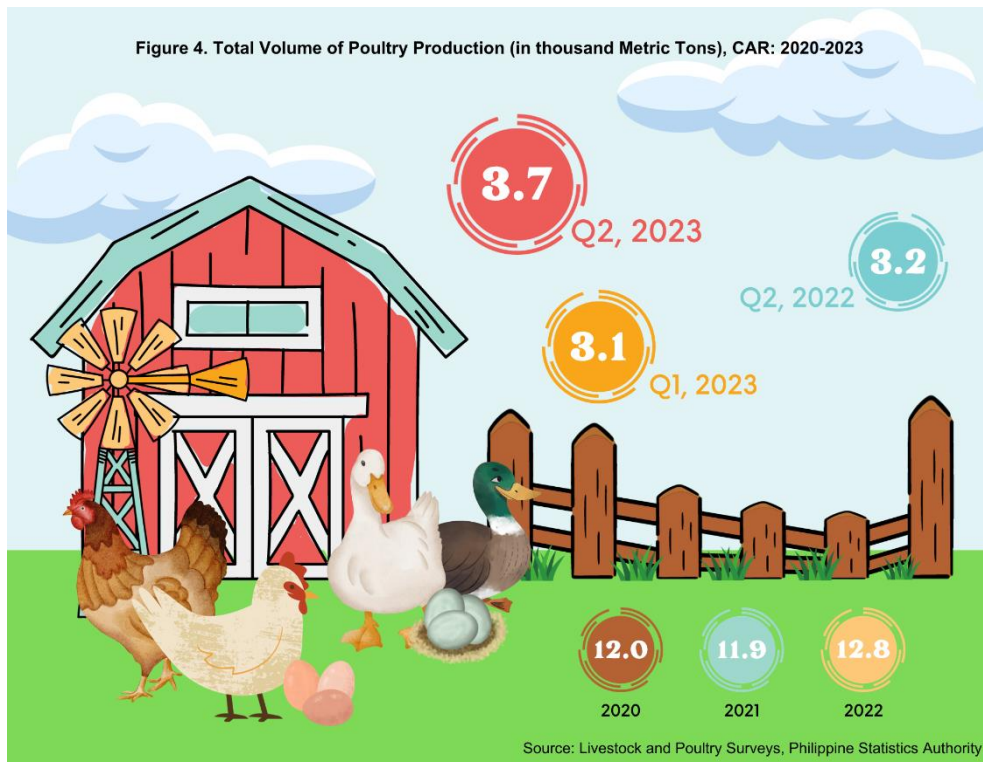
(177 metric tons) and duck eggs (165 metric tons) combined for the remaining 342 metric tons or 9.3 percent of the total output.

The production of chicken was the main contributor to the growth of poultry production in the region with 10.8 percentage points. Chicken egg production further accelerated the regional production by 1.7 percentage points.

The total volume of poultry production of the region contributed a minimal 0.5 percent to the 680,499 metric ton output of the poultry sector of the country in the second quarter of 2023.

Figure 4 shows that the total volume of poultry production of CAR in Q2 2023 (3.7 thousand metric tons) surpassed the recorded levels of the previous quarter (3.1

thousand metric tons) and of the same quarter of the previous year (3.2 thousand metric tons).



**VILLAFE P. ALIBUYOG**  
Regional Director

## Technical Notes

The data for this publication were collected by PSA through the two surveys, namely, Backyard Livestock and Poultry Survey (BLPS) and the Commercial Livestock and Poultry Survey (CLPS).

**Livestock** refers to farm animals kept or raised for consumption, work, or leisure. In general, poultry is separated as a distinct group of farm animals. For purposes of censuses and surveys, livestock covers only those that are tended and raised by an operator.

**Livestock/Poultry Production** refers to the volume of indigenous (locally-raised) animals disposed for slaughter plus animals exported or shipped-out for slaughter both in liveweight equivalent.

**Poultry** is a collective term for all domesticated avian for the purpose of food consumption or, the carcass of such avian dressed/processed for human consumption. Fowl is a term used to refer to a specific group of avian sharing common anatomical characteristics, e.g., chicken and turkey.

---