

# SPECIAL RELEASE

## Religious Affiliation in the Cordillera Administrative Region (2020 Census of Housing and Population)

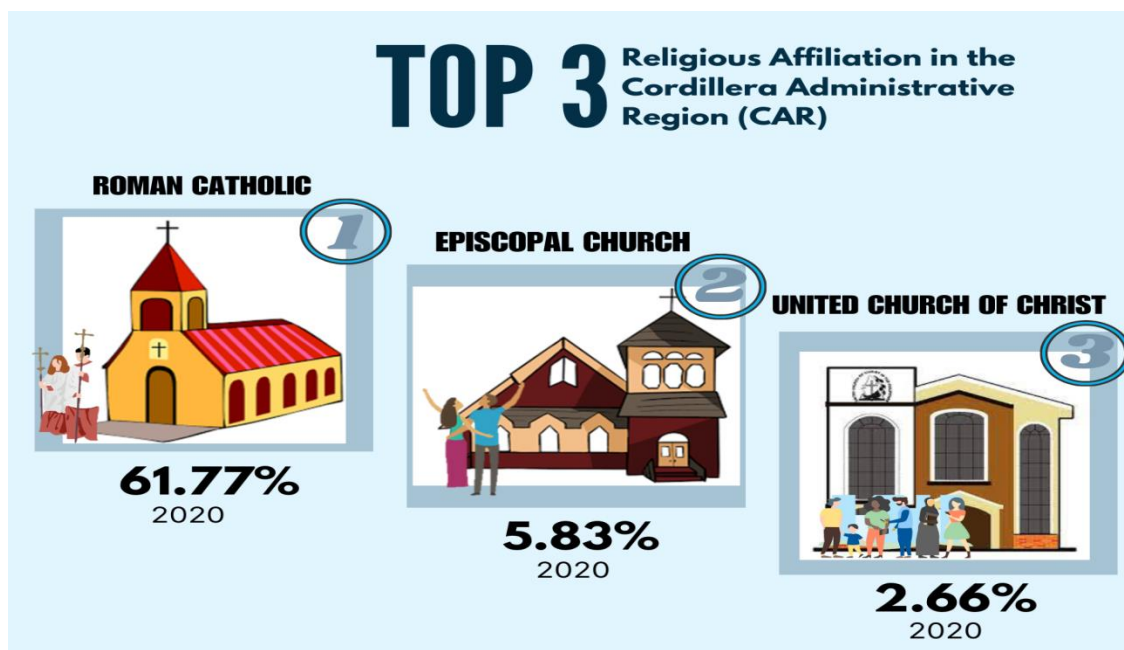
Date of Release: July 28, 2023  
Reference No: SSR 2023-33

### Roman Catholics account for 62% of household population

Of the 1,791,121-household population of the Cordillera Administrative Region (CAR) in 2020, more than three fifths or 1,106,409 persons (61.77%) reported Roman Catholic as their religious affiliation. It was followed by Episcopal Church in the Philippines with 104,455 persons (5.83%) and United Church of Christ in the Philippines with 47,776 persons (2.66%).

Completing the top ten religious affiliation in CAR were Iglesia ni Cristo (2.52%), Assemblies of God (2.47%), Pentecostal Church of God Asia Mission (1.84), Bible Baptist Church (1.45%), Jehovah's Witnesses (1.44%), Lutheran Church of the Philippines (1.40%), and Free Believers in Christ Fellowship (1.35%) (Figure 1 and Table 1).

Figure 1. Top 3 Religious Affiliation in CAR: 2020



Source: Philippine Statistics Authority

**Table 1. Religious Affiliations in the Cordillera Administrative Region: 2020**

Religious Affiliation	Number	Percent	Rank
<b>Cordillera Administrative Region (CAR)</b>	1,791,121	100	
<b>Roman Catholic</b>	1,106,409	61.77	1
<b>Episcopal Church in the Philippines</b>	104,455	5.83	2
<b>United Church of Christ in the Philippines</b>	47,776	2.66	3
<b>Iglesia ni Cristo</b>	45,292	2.52	4
<b>Assemblies of God</b>	44,284	2.47	5
<b>Pentecostal Church of God Asia Mission</b>	33,011	1.84	6
<b>Bible Baptist Church</b>	26,089	1.45	7
<b>Jehovah's Witnesses</b>	25,888	1.44	8
<b>Lutheran Church of the Philippines</b>	25,129	1.40	9
<b>Free Believers in Christ Fellowship</b>	24,184	1.35	10

Source: Philippine Statistics Authority

### **Benguet has greatest number of Roman Catholics**

Of the six (6) provinces and one (1) highly urbanized city (HUC) in CAR, the province of Benguet recorded the highest number of Roman Catholics with 259,919 persons. Baguio City followed with 256,551 persons, Abra with 207,681 persons, Kalinga with 143,598 persons, Ifugao with 101,996 persons, and Apayao with 70,468. Mountain Province on the other hand had the least number of Roman Catholics with 66,196 persons.

In terms of percentage shares, Benguet comprised 23.49 percent of the total regional household population who were Roman Catholics. City of Baguio followed with 23.19 percent, Abra with 18.77 percent, Kalinga with 12.98 percent, Ifugao with 9.22 percent, Apayao with 6.37 percent, and Mountain Province with 5.98 percent.

**Table 2. Number and Proportion of the Household Population Who Reported Roman Catholic as Their Religious Affiliation in The Cordillera Administrative Region (CAR): 2020**

Religious Affiliation	Household Population	Roman Catholic		
		Number	Percent to Regional/Provincial & HUC Population	Percent to Total
<b>Cordillera Administrative Region (CAR)</b>	1,791,121	1,106,409	61.77	100.00
<b>Benguet</b>	459,468	259,919	56.56	23.49
<b>City of Baguio</b>	363,151	256,551	70.65	23.19
<b>Abra</b>	250,309	207,681	82.97	18.77
<b>Kalinga</b>	229,328	143,598	62.62	12.98
<b>Ifugao</b>	207,130	101,996	49.05	9.22
<b>Mountain Province</b>	157,798	66,196	41.95	5.98
<b>Apayao</b>	123,937	70,468	56.86	6.37

Source: Philippine Statistics Authority

### **Abra records highest proportion of Roman Catholics among its household population**

Among the provinces and HUC in the region, Abra had the highest proportion of household population who reported Roman Catholic as their religious affiliation with 82.97 percent of the 250,309 household population of the province. City of Baguio followed with 256,551 persons or 70.65 percent of the 363,151 household population and Kalinga with 143,598 persons or 62.62 percent of the 229,328 household population in the province.

**Table 3. Provinces/HUC with at Least 60 Percent of the Household Population Who Reported Roman Catholic as Their Religious Affiliation, CAR: 2020**

Province	Household Population	Roman Catholic		
		Number	Percent	Rank
<b>Abra</b>	250,309	207,681	82.97	1
<b>City of Baguio</b>	363,151	256,551	70.65	2
<b>Kalinga</b>	229,328	143,598	62.62	3

Source: Philippine Statistics Authority

**VILLAFE P. ALIBUYOG**  
Regional Director

## Technical Notes

**Household** is a social unit consisting of person or a group of persons who sleep in the same housing unit and have a common arrangement in the preparation and consumption of food.

**Household population** refers to all persons who are members of the household.

**Religious affiliation** refers to a particular system of beliefs, attitudes, emotions, and behaviors constituting man's relationship with the powers and principalities of the universe. Moreover, religion is either defined as: (a) religious or spiritual belief of preference, regardless of whether or not this belief is represented by an organized group or (b) affiliation with an organized group having specific religious or spiritual tenets.