



# SPECIAL RELEASE

## 2022 Livestock and Poultry Production in the Cordillera Administrative Region

Date of Release: February 15, 2023

Reference No. SSR 2023-07

The Livestock and Poultry Surveys are major agricultural surveys conducted quarterly by the Philippine Statistics Authority (PSA). The Backyard and Commercial Livestock and Poultry Surveys generate estimates on inventory, supply and disposition, and other related data of livestock and poultry commodities from households and from establishments, respectively.

This Special Release presents the performance of the livestock and poultry sector of the region in terms of total volume of production of livestock commodities, namely, carabao, cattle, hog, and goat; and poultry commodities that include chicken, chicken eggs, duck, and duck eggs.

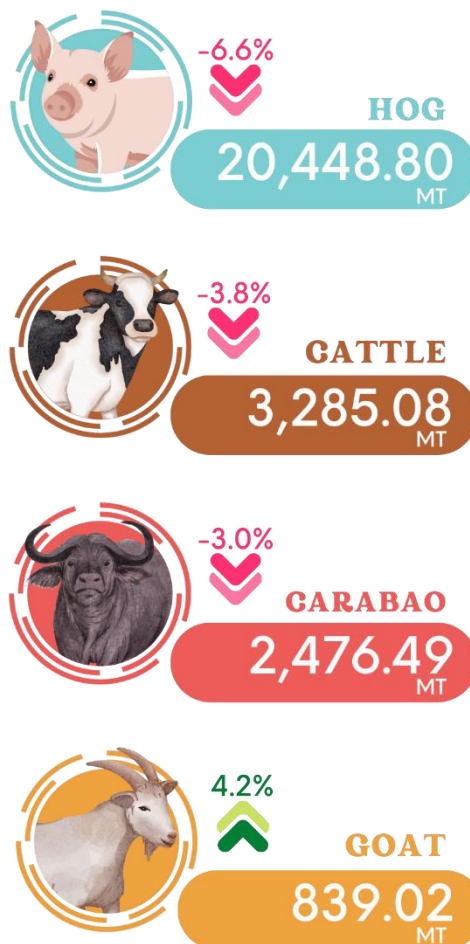
### Livestock production declines in 2022

The total volume of livestock production in the Cordillera Administrative Region (CAR) in 2022 was estimated at 27,049 metric tons. This was composed of 20,449 metric tons of hog, 3,285 metric tons of cattle, 2,476 metric tons of carabao, and 839 metric tons of goat.

The 2022 total volume of livestock production in CAR was 5.6 percent lower than the 28,664 metric ton production of the sector in the region in 2021.

Of the 5.6 percent contraction in the total volume of livestock production in the region, hog production contributed most with

Figure 1. Livestock Production and Growth Rates by Animal Type, CAR: 2022



Source: Philippine Statistics Authority



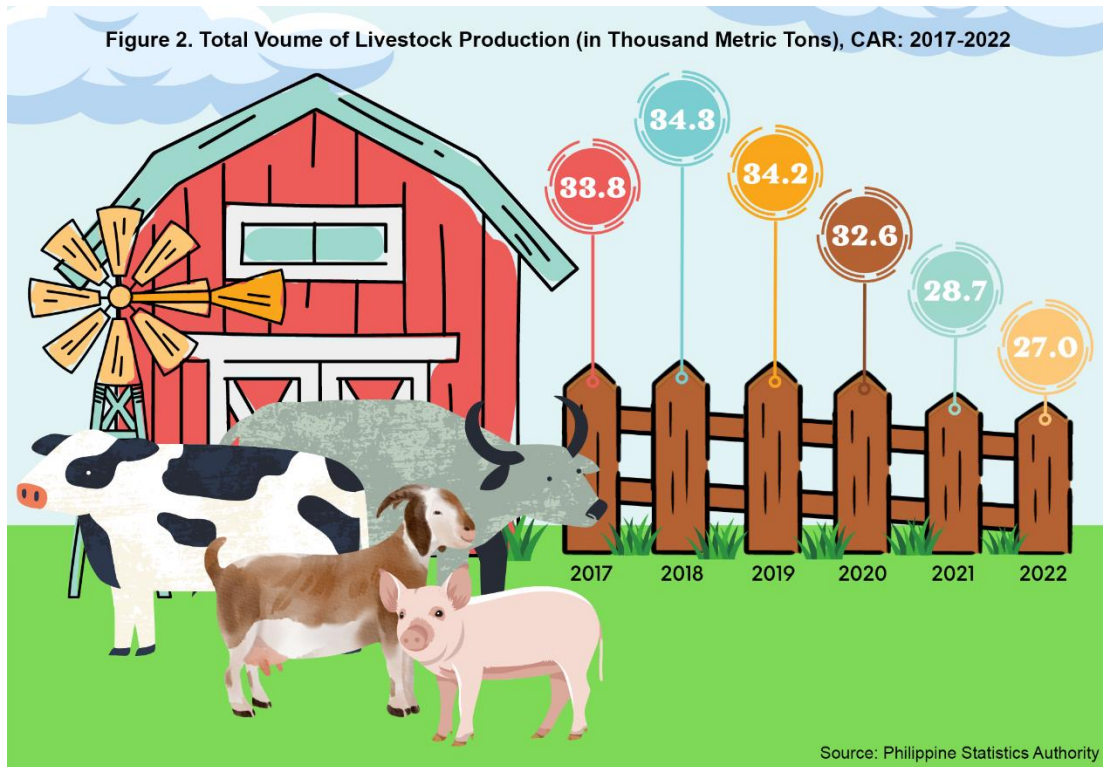
5.0 percentage points. This was followed by cattle and carabao production with a combined contribution of 0.8 percentage points to the decline.

The hog sub-sector recorded a 6.6 percent decline in production in 2022. This was the fastest contracting sector in the livestock industry of the region. Cattle production also declined by 3.8 percent and carabao by 3.0 percent. Conversely, goat production grew by 4.2 percent.

In terms of share to the total volume of livestock production of CAR, hog production comprised three-fourths of the region's total livestock output in 2022. Meanwhile, the production of cattle had 12.1 percent share while carabao and goat accounted for 9.2 and 3.1 percent of the total CAR livestock production, respectively.

In 2022, the Philippines produced 2,147,422 metric tons of livestock commodities. Compared to other regions, CAR remained to be one of the smallest contributors to the country's total livestock production with 1.2 percent share.

Figure 2 shows the total volume of livestock production of CAR from 2017 to 2022. The region continuously experienced a decline in total livestock production from 2018 with 34,334 metric tons to 27,049 metric tons in 2022.



## Production of poultry commodities improves in 2022

Cordillera’s poultry sector, in terms of total volume of production, grew by 7.4 percent from the 11,930 metric ton production in 2021 to 12,817 metric tons poultry products produced in 2022.

All poultry commodities posted growths in 2022 with duck egg production growing the fastest with 18.9 percent. This was followed by the production of chicken with 8.9 percent growth, chicken egg with 5.3 percent, and duck with 0.7 percent.

The total chicken egg production of the region rebounded from 6.2 percent decline in 2021 to 5.3 percent growth in 2022.

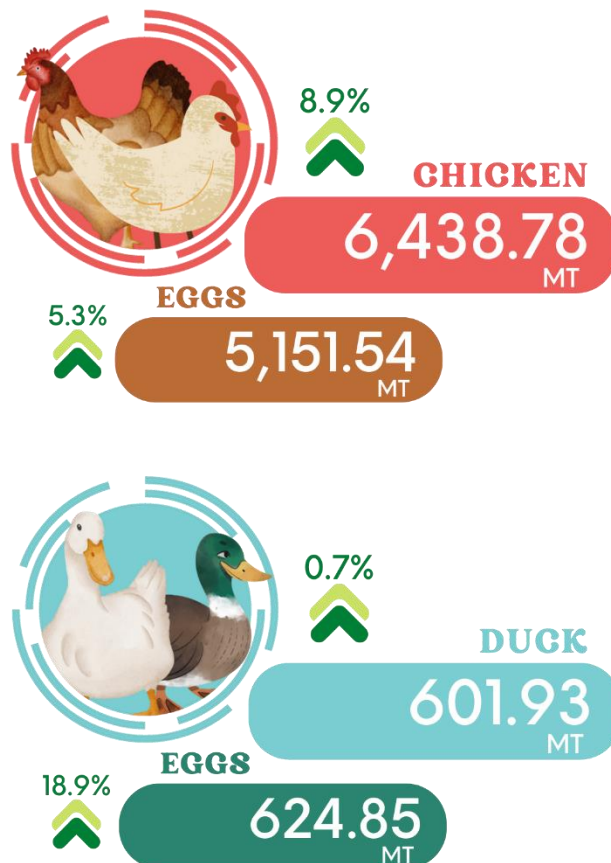
Chicken and chicken eggs contributed 6,439 and 5,152 metric tons to the total regional poultry output, respectively. Duck (602 metric tons) and duck eggs (625 metric tons) combine for the remaining 1,227 metric tons.

The production of chicken was the main contributor to the growth of poultry production in the region with 4.4 percentage points. Chicken egg production further accelerated the regional production by 2.2 percentage points.

Ninety percent of the total CAR poultry production in 2022 was from chicken and chicken egg production while duck and duck egg accounted for the remaining 10 percent.

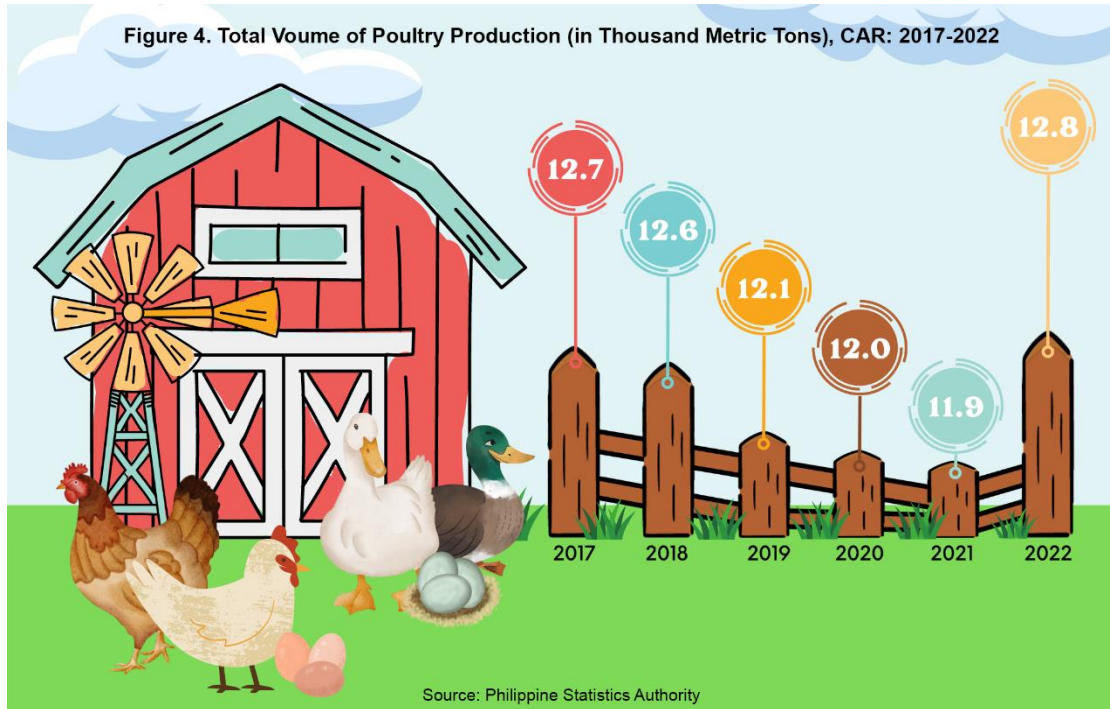
The total volume of poultry production of the region contributed less than 0.5 percent to the 2,657,038 metric ton output of the poultry sector of the country in 2022.

Figure 3. Volume of Poultry Production and Growth Rates by Poultry Product, CAR: 2022



Source: Philippine Statistics Authority

The production of the poultry sector of CAR recovered in 2022. Figure 4 illustrates that the decline in the production of poultry products began in 2018 and lasted until 2021. On a positive note, the volume of production in 2022 surpassed the output level in 2017.



**VILLAFE P. ALIBUYOG**  
Regional Director

## Technical Notes

The data for this publication were collected by PSA through the two surveys, namely, Backyard Livestock and Poultry Survey (BLPS) and the Commercial Livestock and Poultry Survey (CLPS).

**Livestock** refers to farm animals kept or raised for consumption, work, or leisure. In general, poultry is separated as a distinct group of farm animals. For purposes of censuses and surveys, livestock covers only those that are tended and raised by an operator.

**Livestock/Poultry Production** refers to the volume of indigenous (locally-raised) animals disposed for slaughter plus animals exported or shipped-out for slaughter both in liveweight equivalent.

**Poultry** is a collective term for all domesticated avian for the purpose of food consumption or, the carcass of such avian dressed/processed for human consumption. Fowl is a term used to refer to a specific group of avian sharing common anatomical characteristics, e.g., chicken and turkey.

---