



# SPECIAL RELEASE

## January 2020 CAR Labor Force Survey (LFS)

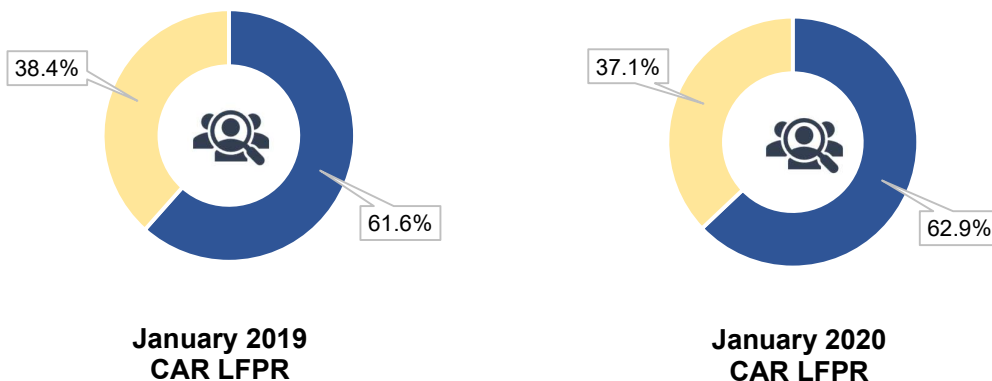
Date of Release: January 29, 2021  
Reference No. SR 2021-04

*The Labor Force Survey (LFS) is a nationwide quarterly survey of households conducted by the Philippine Statistics Authority (PSA) to gather data on the demographic and socio-economic characteristics of the population. Specifically, the survey is designed to provide statistics on levels and trends of employment, unemployment and underemployment for the country, as a whole, and for each of the administrative regions.*

### More than half of population 15 years old and over are in the labor force

- The January 2020 Labor Force Survey showed that the total working population 15 years old and over in the region was estimated at 762 thousand. This translates to 62.9 percent labor force participation rate (LFPR), slightly higher by 1.3 percentage points as compared to the 61.6 percent LFPR recorded in the same quarter of 2019.
- Comparing the regional and the national LFPR, CAR's LFPR was slightly higher than the national labor force participation rate of 61.7 percent.

**Figure 1. Percentage of Working Population 15 years Old and Over, CAR:  
January 2019 and January 2020**

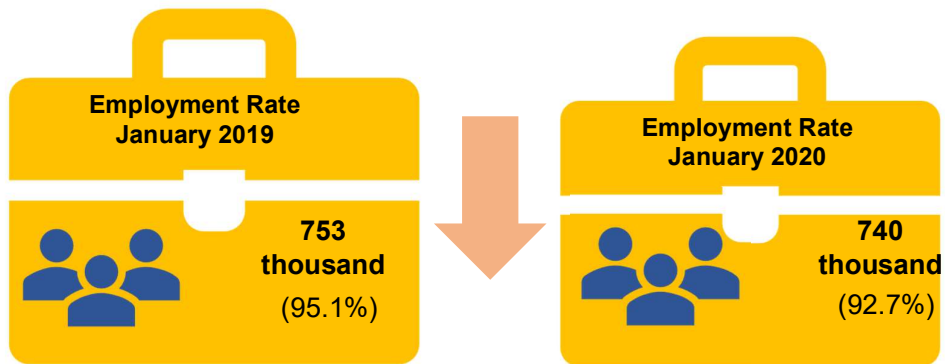


Source: Philippine Statistics Authority

### Employment rate in CAR at 92.7 percent

- Employment rate in the region was at 92.7 percent or equivalent to 740 thousand Cordillerans employed in January 2020. This was higher than the average national employment rate of 94.7 percent.
- Employment rate decreased by 1.7 percentage points as compared to the employment rate in January 2019 at 95.1 percent or equivalent to 753 thousand employed.

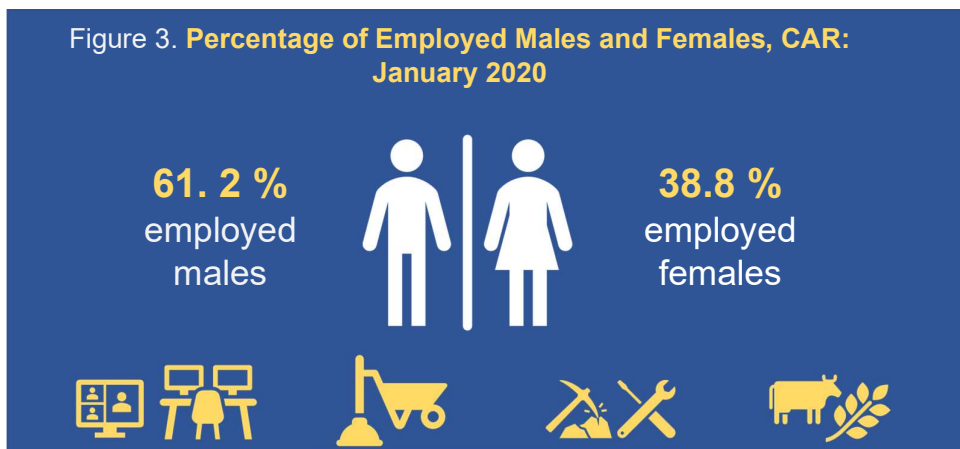
**Figure 2. Percentage of Employed Person 15 years Old and Over, CAR: January 2019 and January 2020**



Source: Philippine Statistics Authority

### More males are employed than females

- In January 2020, 61.2 percent of the estimated 740 thousand employed were males while employed females were recorded at 38.8 percent.

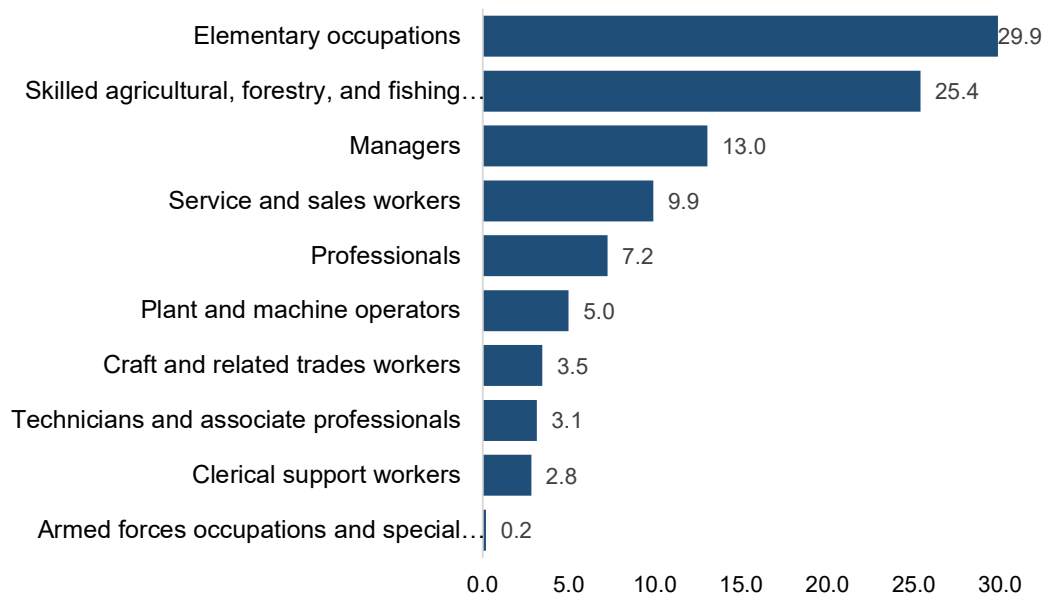


Source: Philippine Statistics Authority

### 3 out of 10 employed persons are in elementary occupations

- Across major occupational groups, workers in elementary occupations shared the largest group with 29.9 percent of the total employed population in the region in January 2020, followed by skilled agricultural, forestry, and fishing workers with 25.4 percent.
- Clerical support workers, and armed forces occupations and special occupations shared the least with 2.8 percent and 0.2 percent, respectively.

**Figure 4. Percent Distribution of Employed Persons by Major Occupation Group, CAR: January 2020**



Source: Philippine Statistics Authority

### Almost half of employed are wage and salary workers

- Wage and salary workers are those who work for private households, private establishments, government and government-controlled corporations, and those who work with pay in own family-oriented farm or business. This class of worker accounted the largest share with 48.8 percent, followed by self-employed without any paid employee with 35.2 percent.
- The share of worked without pay in own family-operated farm or business was 12.8 percent, and the least was self-employed in own family-oriented farm or business was 3.1 percent.

### **Underemployment at 11.3 percent**

- Among the economically active population 15 years old and over, 11.3 percent were underemployed, accounting to 83.6 thousand underemployed Cordillerans.

### **Not in the labor force decreased in January 2020**

- Among the estimated population of 15 years old and over in the region, about 37.1 percent were not in the labor force in January 2020, lower than the 38.4 percent recorded in the same period in the previous year.
- Among those not in the labor force in January 2020, 64.3 percent were females, and 35.7 percent were males. Those not in the labor force include housewives, students, persons with disability, and those who retired from their employment.

**VILLAFE P. ALIBUYOG**

Regional Director

## Technical Notes

### **Population 15 Years Old and Over**

This refers to number of population 15 years old and over excluding overseas workers. Overseas workers are excluded in the estimation of the size of working population (population aged 15 years and over) since the data on their economic characteristics are not collected because they are not considered part of the labor force in the country.

**In the Labor Force or Economically Active Population-** This refers to persons 15 years old and over who are either employed or unemployed.

**Employed persons** include all those who, during the reference period are 15 years old and over as of their last birthday and are reported either:

- a. **At work.** Those who do any work even for one hour during the reference period for pay or profit, or work without pay on the farm or business enterprise operated by a member of the same household related by blood, marriage or adoption; or
- b. **With a job but not at work.** Those who have a job or business but are not at work because of temporary illness or injury, vacation or other reasons. Likewise, persons who expect to report for work or to start operation of a farm or business enterprise within two weeks from the date of the enumerator's visit are considered employed.

**Underemployed** persons include all employed persons who express the desire to have additional hours of work in their present job, or an additional job, or to have a new job with longer working hours. Visibly underemployed persons are those who work for less than 40 hours during the reference period and want additional hours of work.

**Unemployed persons** include all those who, during the reference period, are 15 years old and over as of their last birthday and reported as:

- a) Without work, i.e., had no job or business during the reference period; and
- b) Currently available for work, i.e., were available and willing to take up work in paid employment or self-employment during the reference period, and/or would be available and willing to take up work in paid employment or self-employment within two weeks after the interview date; and
- c) Seeking work, i.e., had taken specific steps to look for a job or establish a business during the reference period, or not seeking work due to the following reasons: (1) tired or believed no work available, i.e., discouraged workers; (2) awaiting results of previous job application; (3) temporary illness or disability; (4) bad weather; and/or (5) waiting for rehire or job recall.

**Persons 15 years old and over** who are neither employed nor unemployed according to the definitions mentioned. Those not in the labor force are persons who are not looking for work because of reasons such as housekeeping, schooling and permanent disability. Examples are housewives, students, disabled, or retired persons.

**Work** means any economic activity a person does for pay during the past week, in cash or in kind, in any establishment, office, farm, private home, or for profit; or without pay on a family farm or enterprise. It also includes the activities engaged in by a farm operator or member of the operator's family, on the farm operated by another household on exchange labor arrangement.